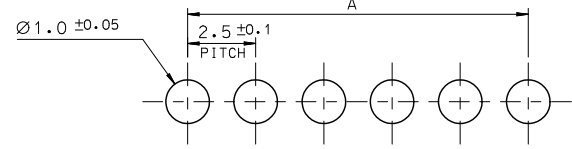
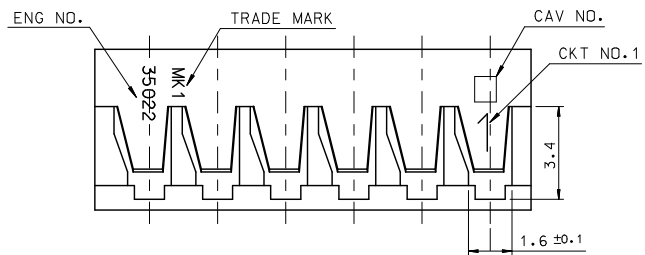
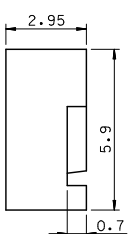
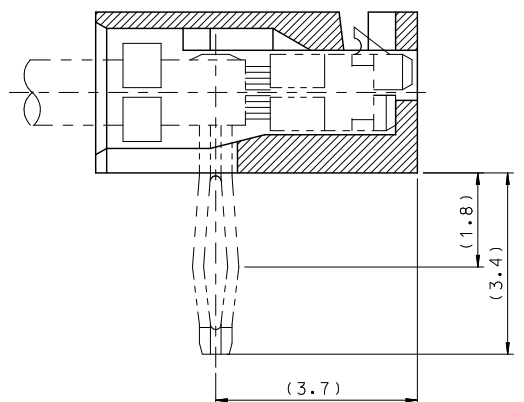
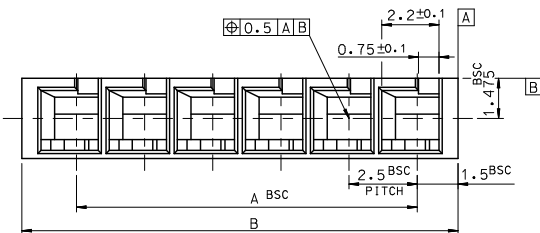
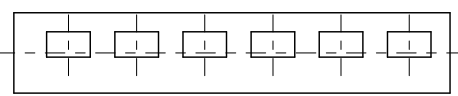


10 9 8 7 6 5 4 3 2 1



P.C. BOARD LAY OUT  
(THK.:1.6+)



41.0	37.5	35022-0016	16	23.5	20.0	-0009	9
38.5	35.0	-0015	15	18.5	17.5	-0008	8
36.0	32.5	-0014	14	16.0	12.5	-0006	6
33.5	30.0	-0013	13	13.5	10.0	-0005	5
31.0	27.5	-0012	12	11.0	7.5	-0004	4
28.5	25.0	-0011	11	8.5	5.0	-0003	3
26.0	22.5	-0010	10	6.0	2.5	35022-0002	2
B	A	ENG NO.	CKT NO.	B	A	ENG NO.	CKT NO.

NOTE.  
1. MATERIAL : PA66,UL94V-0  
COLOR : IVORY  
2. APPLICABLE TERMINAL : 35021-1001/1101

REVISED	DESCRIPTION	QUALITY SYMBOLS
EC NO: KOR2011-0061	DRWN:HPARK01 2010/12/28	▽=0
CHKD:SHCHU 2010/12/28	APPR:JUNSI,KKIM 2010/12/28	▽=0

GENERAL TOLERANCES (UNLESS SPECIFIED)	
4 PLACES	± 0.15
3 PLACES	± 0.20
2 PLACES	± 0.30
1 PLACE	± 0.40
ANGULAR ± 1°	
DRAFT WHERE APPLICABLE MUST REMAIN WITHIN DIMENSIONS	

DIMENSION STYLE MM ONLY	
DRAWN BY HS.SHIN	DATE
CHECKED BY	DATE
APPROVED BY	DATE
MATERIAL NO. SEE TABLE	

SCALE 7:1	DESIGN UNITS METRIC	THIRD ANGLE PROJECTION
TITLE 2.5MM R/A B-IN CONNECTOR HOUSING		
MOLEX INCORPORATED		SHEET NO. 1 OF 01
DOCUMENT NO. SD-35022-00**		

9 8 7 6 5 4 3 2 1