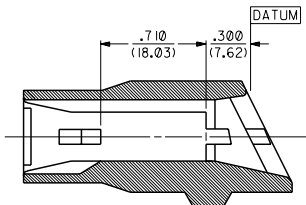


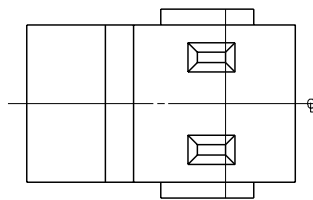
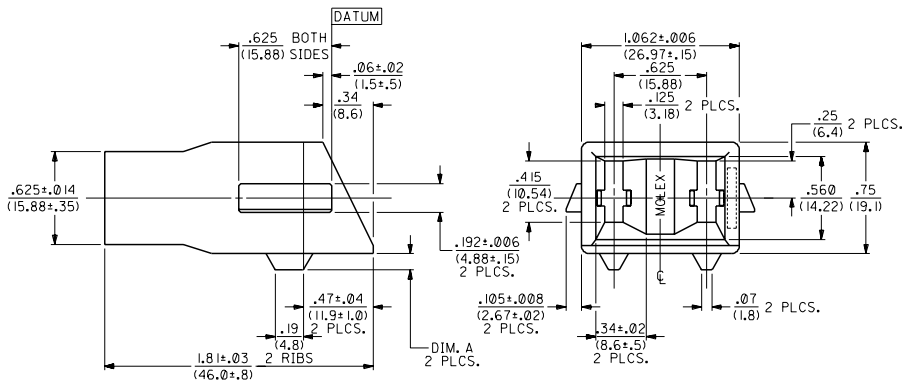
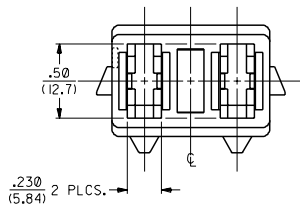
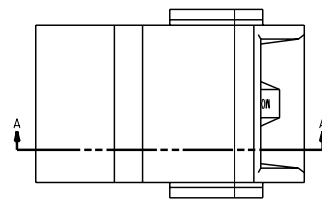
PART NO.	ENG. NO.	DIMENSION A	
050-16-0281	2481	.110 (2.79)	
050-16-0282	2481-15	.075 (1.91)	<b>OBSOLETE</b>

**NOTES:**

1. THIS HOUSING IS FOR USE WITH THE 6482 TYPE TERMINALS AND ASSEMBLES TO THE 2589-• MOUNTING CLIPS.



SECTION A-A  
TYPICAL CORE



**MATERIAL:**

PHENOLIC, MINERAL FILLED, 94V-0,  
COLOR: BLACK.  
PLENCO#4002  
(REF.: SMES-128E-6)

AC OBSOLETE P/N  
UCR2002-0255  
01/9/13 COMERCIAL

AB REVISED  
ECN US 1011  
04/06/95 RHR

AA REDRAWN & REVISED  
ECN US 0525  
11/29/94 RHR

MFG. SH. REV. LTR. REVISIONS

DIMENSIONS SHOWN METRIC INCH		TITLE		REVISE ONLY ON CAD SYSTEM	
UNLESS OTHERWISE SPECIFIED TOLERANCES ANGULAR 1 DEGREE		HOUSING, RECEPTACLE, 2 CIRCUIT			
± PLCS ± .010	---	MOLEX INCORPORATED 155/EJLL 68532	SEE CHART	SHEET NO.	DATE
± PLCS ± .014 ± 0.25	---			1 OF 1	10/04/94
± PLCS --- ± 0.35	---				
DRAFT WHERE APPLICABLE MUST REMAIN WITHIN DIMENSIONS		PART NO. SD-2481-•		DRWG. NO.	
DRW: RHR	CHK'D BY: WRL	FILE NAME: S2481X1		NO P.S.	
APP'D: WRL	SCALE: 2:1	THIS DRAWING CONTAINS INFORMATION THAT IS PROPRIETARY TO MOLEX INC. AND SHOULD NOT BE USED WITHOUT WRITTEN PERMISSION.		CP C	