

RECEPTACLE HOUSING

UPDATE TITLE BLOCK EC NO. UCP2007-1498 DRW:SELHAG 2007/04/04 CHK:SELHAG 2007/04/04 APP:SMITH 2007/04/04	QUALITY SYMBOLS ▽=0 ▽=0	GENERAL TOLERANCES (UNLESS SPECIFIED)		DIMENSION STYLE IN/MM		SCALE 2:1	DESIGN UNITS INCH	<input checked="" type="checkbox"/> THIRD ANGLE PROJECTION	
		4 PLACES ± --- ± --- 3 PLACES ± --- ± .010 2 PLACES ± 0.25 ± .014 1 PLACE ± 0.35 ± --- ANGULAR ± 1 °	DRAWN BY SEP 1988/03/07	DATE 1988/03/07	CHECKED BY RW 1988/03/07	DATE 1988/03/07	APPROVED BY RAS 1988/03/07	DATE 1988/03/07	TITLE .093/(2.36) HOUSINGS, PLUG AND RECEPTACLE, 3 CKT., .248/(6.30) CTRS
MATERIAL NO. SEE CHART	DOCUMENT NO. SD-1991-3*	SHEET NO. 2 OF 3	DRAFT WHERE APPLICABLE MUST REMAIN WITHIN DIMENSIONS						THIS DRAWING CONTAINS INFORMATION THAT IS PROPRIETARY TO MOLEX INCORPORATED AND SHOULD NOT BE USED WITHOUT WRITTEN PERMISSION

13 12 11 10 9 8 7 6 5 4 3 2 1

PLUG		
PART NO.	ENG. NO.	PKG. INFORMATION
I9-09-2031	I991-3P	PK-1991-001
I9-09-7031	I991-3PBK	PK-1991-001
I9-09-7032	I991-3PIBK	PK-1991-001
I9-09-2033	I991-3P4	
I9-09-2032	I991-3PI	PK-1991-002
I9-09-7034	I991-3PIOR	PK-1991-001
		OBS.

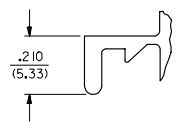
RECEPTACLE		
PART NO.	ENG. NO.	PKG. INFORMATION
I9-09-1032	I991-3R1	PK-1991-001
I9-09-6031	I991-3RBK	PK-1991-001
I9-09-6032	I991-3RIBK	PK-1991-001
I9-09-1030	I991-3R5	
		OBS.

**LEGEND:**

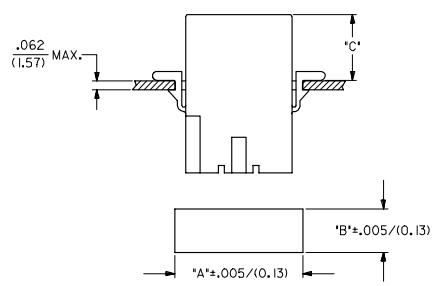
1991-3\*\*\*\*  
 CIRCUIT SIZE  
 P = PLUG  
 R = RECEPTACLE

BLANK = PLUG; WITH PREBENT EARS  
 PER DETAIL 4  
 1 = WITHOUT EARS  
 4 = WITHOUT EARS, WITHOUT SQUARE  
 ENDS PER DETAIL 1  
 5 = RECEPT; WITH PREBENT EARS,  
 PER DETAIL 4

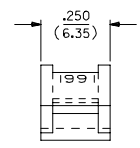
COLOR: BLANK=NATURAL COLOR  
 AM=AMBER BK=BLACK BU=BLUE  
 BN=BROWN GY=GRAY GN=GREEN  
 OR=ORANGE RD=RED YW=YELLOW



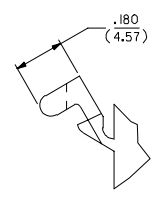
**DETAIL 3**  
 STANDARD MOUNTING EAR  
 (SCALE 4:1)



HOUSING	DIM. "A"	DIM. "B"	DIM. "C" STD.	EARDIM. "C" PREBENT
PLUG	.1022/(25.96)	.365/(9.27)	.48/(12.2)	.52/(13.2)
RECEPTACLE	.920/(23.37)	.311/(7.90)	.47/(11.9)	.51/(12.9)



**DETAIL 4**  
 PREBENT MOUNTING EAR  
 (SCALE 4:1)



**NOTES:**

- MATERIAL: NYLON TYPE 6/6, 94V-2.
- FINISH: NOT APPLICABLE
- PRODUCT SPECIFICATION: PS-02-09
- PACKAGING SPECIFICATION: SEE CHART
- ACCEPTS MOLEX .093/(2.36) SERIES TERMINALS.
- VERSION FOR USE WITH 2687 CONNECTOR.
- PARTS CONFORM TO CLASS B REQUIREMENTS OF COSMETIC SPECIFICATION PS-45499-002.

ADD NOTES 2,3,4 & 7 EC NO: UCP2007-1498 DRW: X DRW: X CK: X APP: X REV: X	QUALITY SYMBOLS ▽=0 ▽=0	GENERAL TOLERANCES (UNLESS SPECIFIED) mm INCH 4 PLACES ± --- ± --- 3 PLACES ± --- ± .010 2 PLACES ± 0.25 ± .014 1 PLACE ± 0.35 ± --- ANGULAR ± 1 °		DIMENSION STYLE IN/MM	SCALE 2:1	DESIGN UNITS INCH	THIRD ANGLE PROJECTION
		DRAWN BY: SEP DATE: 1988/03/07 CHECKED BY: RW DATE: 1988/03/07 APPROVED BY: RAS DATE: 1988/03/07		MATERIAL NO. SEE CHART DOCUMENT NO. SD-1991-3* SHEET NO. 3 OF 3		TITLE .093/(2.36) HOUSINGS, PLUG AND RECEPTACLE, 3 CKT., .248/(6.30) CTRS. MOLEX INCORPORATED	

12 11 10 9 8 7 6 5 4 3 2 1