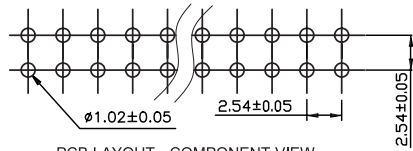
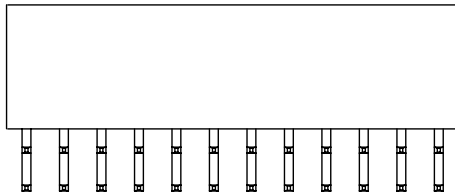
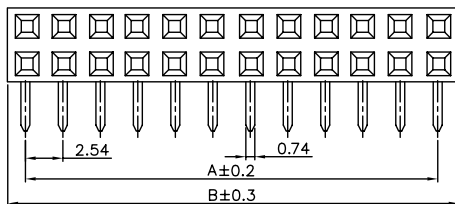


1 2 3 4 5



PCB LAYOUT - COMPONENT VIEW

TECHNICAL CHARACTERISTICS

MATERIAL
 INSULATOR: PBT
 FLAMABILITY RATING: UL94-V0
 COLOR: BLACK
 CONTACT MATERIAL: COPPER ALLOY
 CONTACT TYPE: STAMPED
 CONTACT PLATING: GOLD
 QUALITY CLASS: 3 AS PER CECC 75 301-802
 PITCH: 2.54MM

ENVIRONMENTAL
 OPERATING TEMPERATURE: -40 UP TO 125°C
 COMPLIANCE: LEAD FREE AND ROHS

ELECTRICAL
 CURRENT RATING: 3A
 WORKING VOLTAGE: 250V AC
 INSULATOR RESISTANCE: >1000 MOHM
 DIELECTRIC WITHSTANDING VOLTAGE: 500V AC/MN
 CONTACT RESISTANCE: 20 mOHM MAX

SOLDERING
 WAVE PROCESS ONLY

PACKAGING
 TRAY

DIMENSION
 A = 2.54 x (NB. PIN - 1)
 B = 2.54 x (NB. POSITIONS) + 0.5

A
B
C

RoHS Compliant				PROJECTION: 	GENERAL TOLERANCE .X = +/_ 0.2 .XX = +/_ 0.15		DESCRIPTION: 2.54MM ANGLED DUAL SOCKET HEADER	SIZE A4
G								
F								
E								
D				APPROVAL: RJ	UNIT: MM SCALE: SHEET: 1/1 DRAW: MIKE WU	WERI PART NO: 6130 xx 243 121		
C								
B								
A	06-NOV-08	PDF	JP					
REV	DATE	FILE	BY					

D