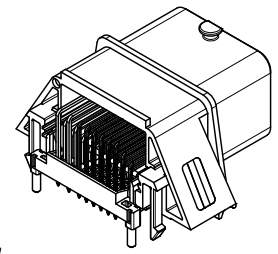


- NOTES
Bemerkungen
- GENERAL TOLERANCE ACC. DIN 16901 Group 130
Allgemeintoleranz nach DIN 16901 Gruppe 130
 - SEALING AREA (NO BURR, SCRATCHES, CONTAMINATION, SHRINK DEPENDENT WARPAGE AND TOOL SPLITTING LINES ALLOWED)
Dichtbereich (Kein Grat, Kratzer, Verschmutzung, schwindungsbedingte Wandeinfälle und Werkzeugtrennlinien erlaubt)
 - MATERIAL MARKING
ADDITIONAL MARKING POSSIBLE
e.g.: - CAVITY No.
- MATERIAL No.
- VERSION No.
- TRACEABILITY MARKING (INK-JET OR LASERMARKING (SPECIAL PLASTIC MATERIAL NEEDED))
- etc.
Materialkennzeichnung
Zusätzliche Kennzeichnungen möglich
z.B.: - Teile Nr.
- Versions Nr.
- Rückverfolgbarkeitskennzeichnung (Tinten- oder Laserbedruckung (spezielles Kunststoffmaterial nötig))
- etc.
 - TOOLING SPLITTING LINES FOR AIR VENT (2x)
Werkzeugtrennlinien zur Entlüftung (2x)
 - COLOUR CODING ON INTERFACE (BLACK AND BROWN)
Farbkodierung an Schnittstelle (schwarz und braun)
 - MARKING FOR HARNESS DIRECTION: APPLY WHITE INK
Kennzeichnung Kabelabgangsrichtung: Verwendung weißer Tinte
 - MATES WITH CMC CONNECTOR 32CKT.
Steckbar mit CMC Steckverbinder 32pol.
MATERIAL NO's:
RIGHT WIRE OUTPUT BROWN CODING 643193219
RIGHT WIRE OUTPUT BLACK CODING 643193211
Teilenummern:
Rechter Kabelabgang braune Kodierung 643193219
Rechter Kabelabgang schwarze Kodierung 643193211



3D-VIEW
3D-Ansicht

TECHNICAL PERFORMANCE CHARACTERISTICS
Technische Leistungsmerkmale

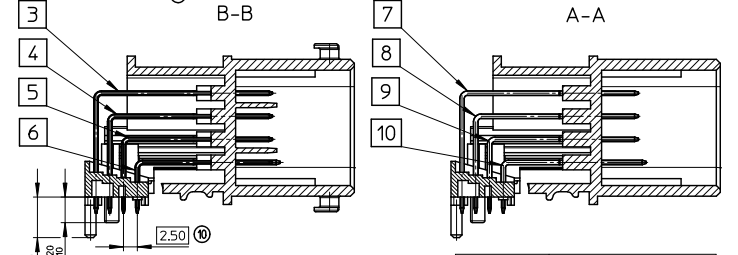
LOCKING FEATURES RETENTION FORCE AVERAGE: >260N
THE LOWEST RETENTION FORCE VALUE >240N
Durchschnittliche Haltekraft an den Verriegelungsdomen: >260N
Der kleinste Wert darf 240N nicht unterschreiten

PIN AND TAB RETENTION AND TRACTION FORCES:
Pin und Tab Druck- und Zughaltekräfte:

CONTACT Kontakt	SIZE [mm] Größe [mm]	RETENTION FORCES Haltekraft Druck
Pin	0.635x0.635	≥30N
Tab	1.5x0.8	≥60N

SOLDERABILITY:
TESTING ACC. DIN IEC 60068-2-20 WITHOUT PRE-AGING
Lötbarkeit:
Durchführung nach DIN IEC 60068-2-20 ohne Voralterung

ALL FURTHER TECHNICAL PERFORMANCE CHARACTERISTICS ARE SHOWN IN PRODUCTS AND TEST SPECIFICATION OF THE RELEVANT FEMALE CONNECTORS -> PS-64319-001
Alle weiteren Technischen Leistungsmerkmale entnehmen Sie den Produkt- bzw. Testspezifikationen der entsprechenden Steckverbinder -> PS-64319-001

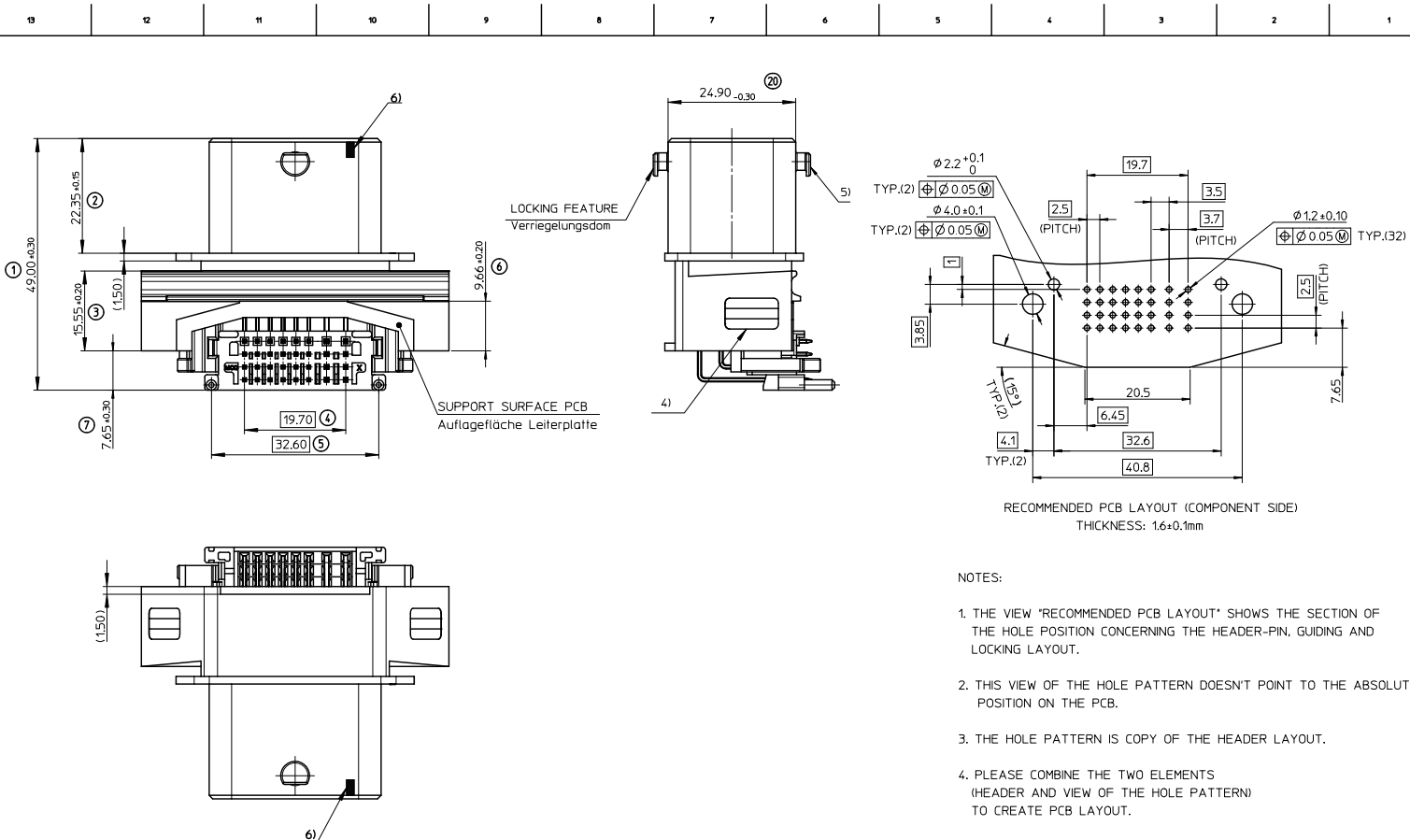


PITCH FROM ROW TO ROW
Reihenabstand

0643340100	MOLEX MATERIAL NO. CODING BLACK / MOLEX Teile-Nr. Kodierung schwarz
0643340300	MOLEX MATERIAL NO. CODING BROWN / MOLEX Teile-Nr. Kodierung braun
CMC Header Assy 32ckt.	DESCRIPTION / Benennung
28.3 g	WEIGHT MEASURED / GEWICHT GEMESSEN

ITEM Position	DESCRIPTION Benennung	MOLEX MAT.-NO. Molex Teile-Nr.	RAW MATERIAL Rohmaterial	BARRIER (overall) PLATING [µm] Beschichtung [µm]	FINISH (overall) UNIT Einheit	AMOUNT Menge
10	Pin 1.5 Row 4	500756-4024	CuZn30 R410	Ni 1.3-3.8	Sn 2-4	Piece 2
9	Pin 1.5 Row 3	500756-3024	CuZn30 R410	Ni 1.3-3.8	Sn 2-4	Piece 2
8	Pin 1.5 Row 2	500756-2024	CuZn30 R410	Ni 1.3-3.8	Sn 2-4	Piece 2
7	Pin 1.5 Row 1	500756-1024	CuZn30 R410	Ni 1.3-3.8	Sn 2-4	Piece 2
6	Pin 0.64 Row 4	500757-4024	CuZn30 R410	Ni 1.3-3.8	Sn 2-4	Piece 6
5	Pin 0.64 Row 3	500757-3024	CuZn30 R410	Ni 1.3-3.8	Sn 2-4	Piece 6
4	Pin 0.64 Row 2	500757-2024	CuZn30 R410	Ni 1.3-3.8	Sn 2-4	Piece 6
3	Pin 0.64 Row 1	500757-1024	CuZn30 R410	Ni 1.3-3.8	Sn 2-4	Piece 6
2	Guiding Plate	0643340002	PBT GF30-V0 blk	---	---	Piece 1
1	Housing	0643340010	PBT GF30-V0 blk	---	---	Piece 1

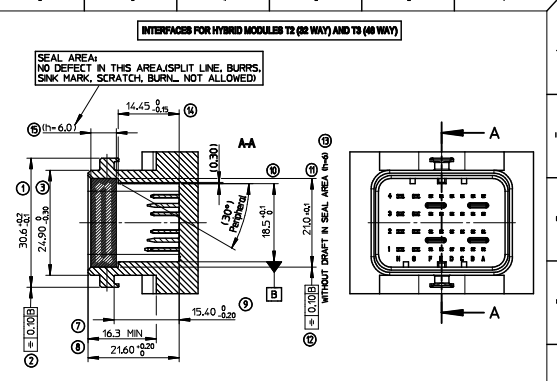
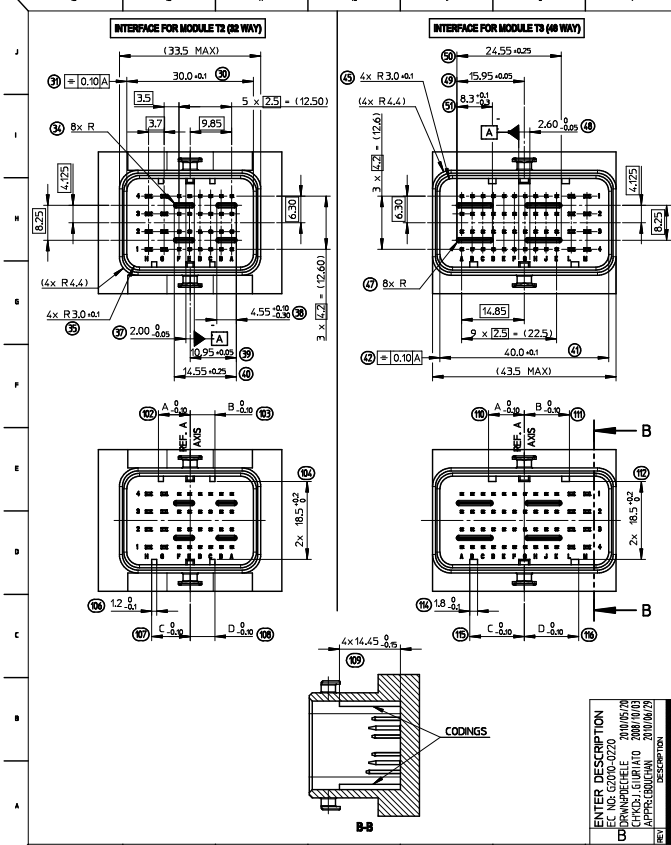
ENTER DESCRIPTION IEC NO: GCA 2011-0026 DRAWN BY: MBALZER CHKD: JGIURIATO APPR: PBERG	QUALITY SYMBOLS ▽=0 ▽=0 ▽=0	GENERAL TOLERANCES (UNLESS SPECIFIED)	DIMENSION STYLE MM ONLY	SCALE 2:1	DESIGN UNITS METRIC	THIRD ANGLE PROJECTION
		4 PLACES ± --- ± --- 3 PLACES ± --- ± --- 2 PLACES ± --- ± --- 1 PLACE ± --- ± --- ANGULAR ± ---°	DRAWN BY: MBALZER DATE: 2008/08/04	CHECKED BY: JGIURIATO DATE: 2008/08/05	APPROVED BY: PBERG DATE: 2010/10/26	CMC HEADER 32CKT. ASSEMBLED SOLDER VERSION
DRAFT WHERE APPLICABLE MUST REMAIN WITHIN DIMENSIONS		SEE TABLE	MATERIAL NO. SD-64334-100	MOLEX INCORPORATED		
SIZE A		THIS DRAWING CONTAINS INFORMATION THAT IS PROPRIETARY TO MOLEX INCORPORATED AND SHOULD NOT BE USED WITHOUT WRITTEN PERMISSION			SHEET NO. 1 OF 5	



NOTES:

1. THE VIEW 'RECOMMENDED PCB LAYOUT' SHOWS THE SECTION OF THE HOLE POSITION CONCERNING THE HEADER-PIN, GUIDING AND LOCKING LAYOUT.
2. THIS VIEW OF THE HOLE PATTERN DOESN'T POINT TO THE ABSOLUTE POSITION ON THE PCB.
3. THE HOLE PATTERN IS COPY OF THE HEADER LAYOUT.
4. PLEASE COMBINE THE TWO ELEMENTS (HEADER AND VIEW OF THE HOLE PATTERN) TO CREATE PCB LAYOUT.

ENTER DESCRIPTION IEC NO: GCA 2011-0026 DRAWN: TL00 CHKD: JGIURIATO APPR: PBERG	QUALITY SYMBOLS $\nabla=0$ $\nabla=0$ $\nabla=0$	GENERAL TOLERANCES (UNLESS SPECIFIED)		DIMENSION STYLE MM ONLY	SCALE 2:1	DESIGN UNITS METRIC	THIRD ANGLE PROJECTION		
		4 PLACES ± --- ± ---	3 PLACES ± --- ± ---	2 PLACES ± --- ± ---	1 PLACE ± --- ± ---	DRAWN BY MBALZER	DATE 2008/08/04	TITLE CMC HEADER 32CKT. ASSEMBLED SOLDER VERSION	
		ANGULAR ± --- °	DRAFT WHERE APPLICABLE MUST REMAIN WITHIN DIMENSIONS		MATERIAL NO. SEE SHEET 1	APPROVED BY PBERG	DATE 2010/10/26	DOCUMENT NO. SD-64334-100	SHEET NO. 2 OF 5
		THIS DRAWING CONTAINS INFORMATION THAT IS PROPRIETARY TO MOLEX INCORPORATED AND SHOULD NOT BE USED WITHOUT WRITTEN PERMISSION							MOLEX INCORPORATED



HEADERS CODINGS

CODING 2 SHOWN

COLOR	CODING	DIM. A	DIM. B	DIM. C	DIM. D
BLACK	1	9.1	4.3	5.9	4.3
GREY	2	7.5	5.9	9.1	5.9
BROWN	3	5.9	7.5	9.1	9.1
GREEN	4	7.5	9.1	4.3	4.3
BLUE	5	4.3	7.5	5.9	5.9
YELLOW	6	9.1	7.5	4.3	7.5

CODING 3 SHOWN

COLOR	CODING	DIM. A	DIM. B	DIM. C	DIM. D
BLACK	1	12.9	6.3	8.5	6.3
GREY	2	10.7	8.5	12.9	8.5
BROWN	3	8.5	10.7	12.9	12.9
GREEN	4	10.7	12.9	6.3	6.3
BLUE	5	6.3	10.7	8.5	8.5
YELLOW	6	12.9	10.7	6.3	10.7

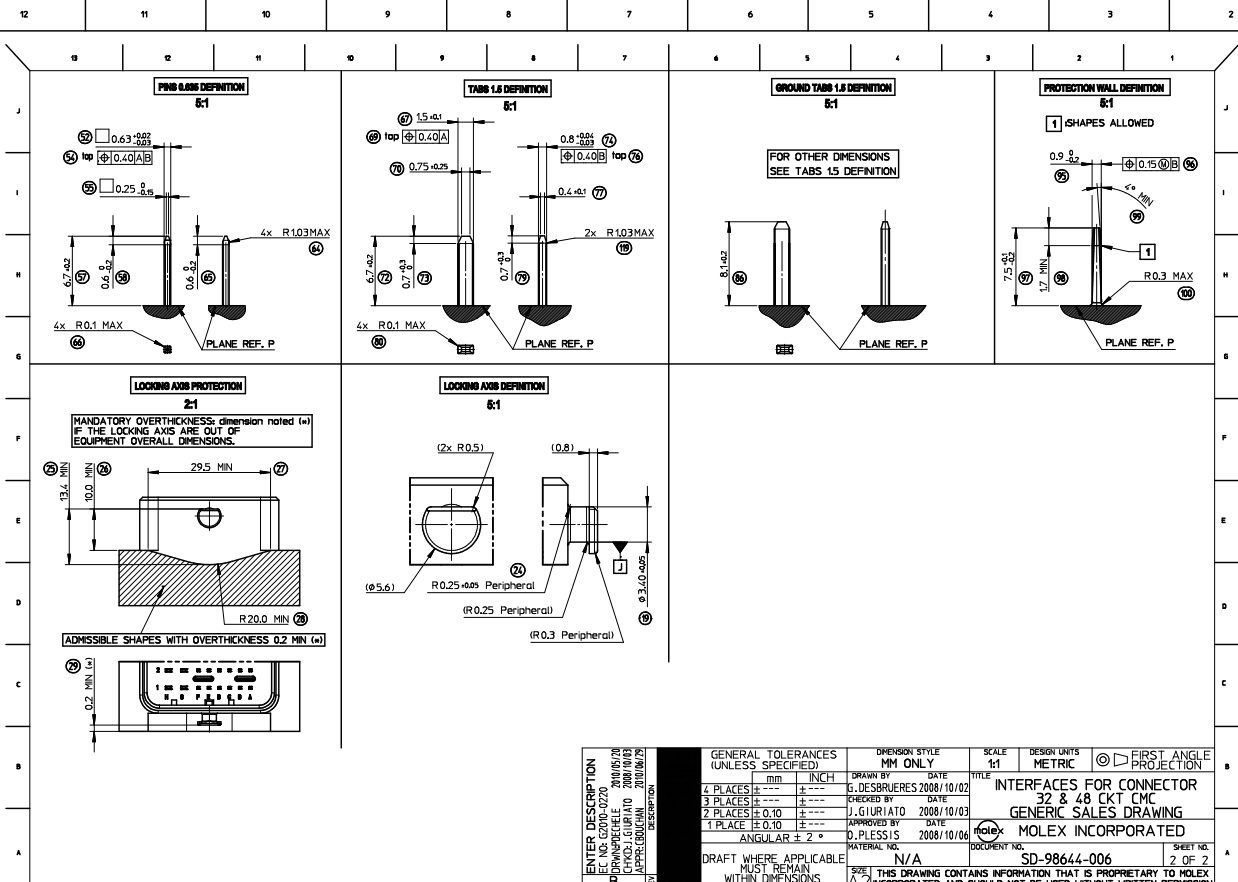
NOTE
 1- INTERFACE DEFINITION BASED ON NFR13-462 STANDARD.
 2- HEADER: ELASTICITY MODULUS: 8000Hpa min.
 INITIAL CONDITION BEFORE AGING!

tb_frame_A2_P_AM_T
 Rev. F 2009/06/18

ENTER DESCRIPTION EC NO. GCA-2011-0026 DRAWN: TL00 2010/10/15 CHKD: GGIURATO 2010/10/18 APPR: PBERG 2010/10/26 REV: 01	GENERAL TOLERANCES (UNLESS SPECIFIED) 4 PLACES ± --- ± --- 3 PLACES ± --- ± --- 2 PLACES ± 0.10 ± --- 1 PLACE ± 0.10 ± --- ANGULAR ± 2 °	DIMENSION STYLE MM ONLY DRAWN BY: G. DESBRUERES 2008/10/02 CHECKED BY: J. GIURATO 2008/10/03 APPROVED BY: D. PLESSIS 2008/10/06 MATERIAL NO.: N/A DRAFT WHERE APPLICABLE MUST REMAIN WITHIN DIMENSIONS	SCALE 2:1 DESIGN UNITS METRIC FIRST ANGLE PROJECTION	TITLE INTERFACES FOR CONNECTOR 32 & 48 CKT CMC GENERIC SALES DRAWING MOLEX MOLEX INCORPORATED DOCUMENT NO. SD-98644-006 SHEET NO. 1 OF 1
--	--	---	---	---

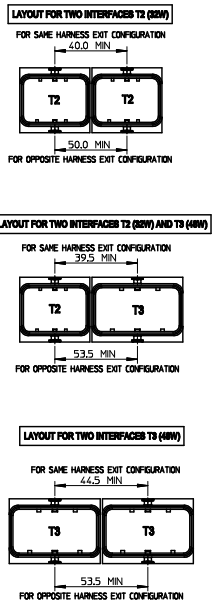
ENTER DESCRIPTION EC NO. GCA-2011-0026 DRAWN: TL00 2010/10/15 CHKD: GGIURATO 2010/10/18 APPR: PBERG 2010/10/26 REV: 01	QUALITY SYMBOLS ∇=0 ∇=0 ∇=0	GENERAL TOLERANCES (UNLESS SPECIFIED) 4 PLACES ± --- ± --- 3 PLACES ± --- ± --- 2 PLACES ± 0.10 ± --- 1 PLACE ± 0.10 ± --- ANGULAR ± 2 °	DIMENSION STYLE MM ONLY DRAWN BY: MBALZER 2008/08/04 CHECKED BY: JGIURATO 2008/08/05 APPROVED BY: PBERG 2010/10/26 MATERIAL NO.: SEE SHEET 1 DRAFT WHERE APPLICABLE MUST REMAIN WITHIN DIMENSIONS	SCALE 1:1 DESIGN UNITS METRIC THIRD ANGLE PROJECTION	TITLE CMC HEADER 32CKT. ASSEMBLED SOLDER VERSION MOLEX MOLEX INCORPORATED DOCUMENT NO. SD-64334-100 SHEET NO. 3 OF 5
--	---	--	--	---	--

tb_frame_A2_P_AM_T
 Rev. F 2009/06/18



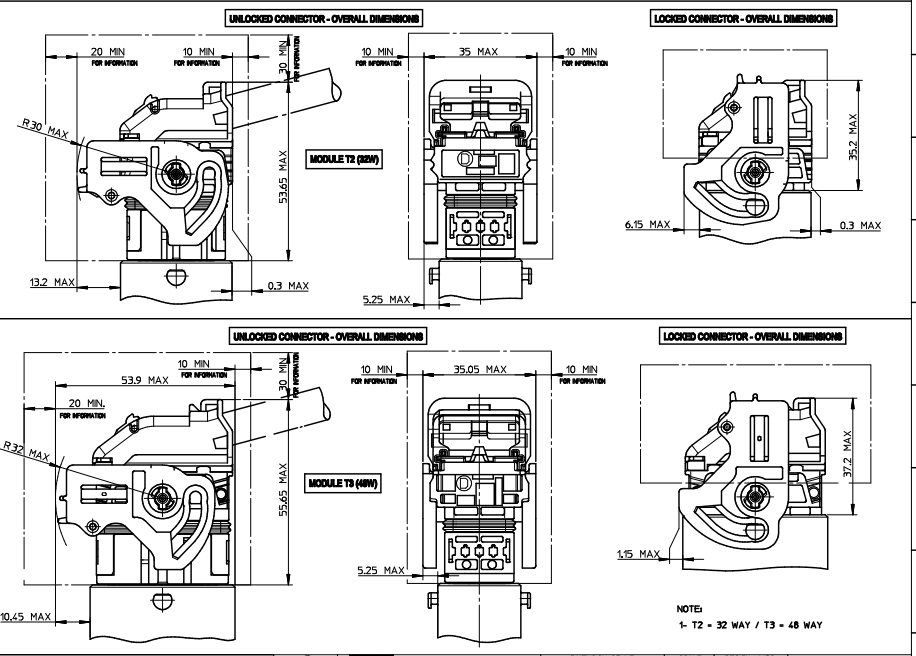
ENTER DESCRIPTION EC NO. GCA 2011-0026 DRAWN: TLUD 2010/10/15 CHKD: JGIURIATO 2010/10/18 APPROV: PBERG 2010/10/26	GENERAL TOLERANCES (UNLESS SPECIFIED)	DIMENSION STYLE	SCALE	DESIGN UNITS	PROJECTION
	4 PLACES ± --- ± --- 3 PLACES ± --- ± --- 2 PLACES ± 0.10 ± --- 1 PLACE ± 0.10 ± --- ANGULAR ± 2° ± ---	MM ONLY	1:1	METRIC	FIRST ANGLE
	DRAWN BY DATE	CHECKED BY DATE	APPROVED BY DATE	TITLE	
	G. DESBRUERES 2008/10/02 J. GIURIATO 2008/10/03 D. PLESSIS 2008/10/08		INTERFACES FOR CONNECTOR 32 & 48 CKT CMC GENERIC SALES DRAWING MOLEX INCORPORATED		
DRAFT WHERE APPLICABLE MUST REMAIN WITHIN DIMENSIONS		MATERIAL NO.	DOCUMENT NO.	SHEET NO.	
		N/A	SD-98644-006	2 OF 2	
THIS DRAWING CONTAINS INFORMATION THAT IS PROPRIETARY TO MOLEX INCORPORATED AND SHOULD NOT BE USED WITHOUT WRITTEN PERMISSION					

ENTER DESCRIPTION EC NO. GCA 2011-0026 DRAWN: TLUD 2010/10/15 CHKD: JGIURIATO 2010/10/18 APPROV: PBERG 2010/10/26	QUALITY SYMBOLS	GENERAL TOLERANCES (UNLESS SPECIFIED)	DIMENSION STYLE	SCALE	DESIGN UNITS	PROJECTION
	∇=0 ∇=0 ∇=0	4 PLACES ± --- ± --- 3 PLACES ± --- ± --- 2 PLACES ± --- ± --- 1 PLACE ± --- ± --- ANGULAR ± --- ± ---	MM ONLY	2:1	METRIC	THIRD ANGLE
	DRAWN BY DATE	CHECKED BY DATE	APPROVED BY DATE	TITLE		
	MBALZER 2008/08/04 JGIURIATO 2008/08/05 PBERG 2010/10/26		CMC HEADER 32CKT. ASSEMBLED SOLDER VERSION MOLEX INCORPORATED			
DRAFT WHERE APPLICABLE MUST REMAIN WITHIN DIMENSIONS		MATERIAL NO.	DOCUMENT NO.	SHEET NO.		
		SEE SHEET 1	SD-64334-100	4 OF 5		
THIS DRAWING CONTAINS INFORMATION THAT IS PROPRIETARY TO MOLEX INCORPORATED AND SHOULD NOT BE USED WITHOUT WRITTEN PERMISSION						



MULTI-HEADERS LAYOUT

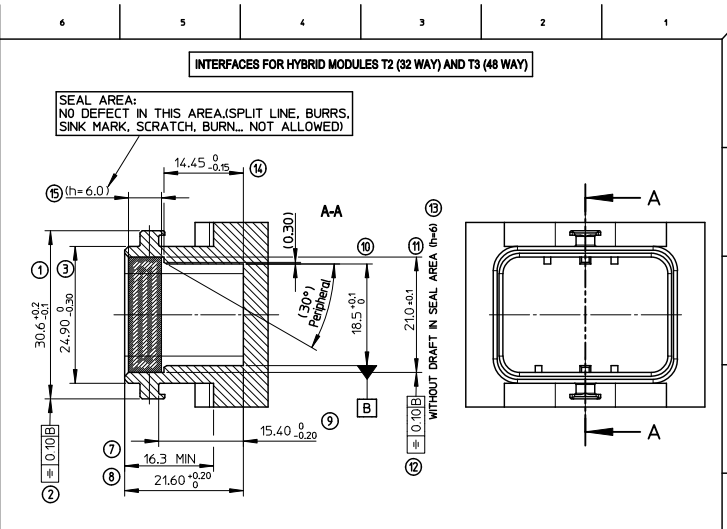
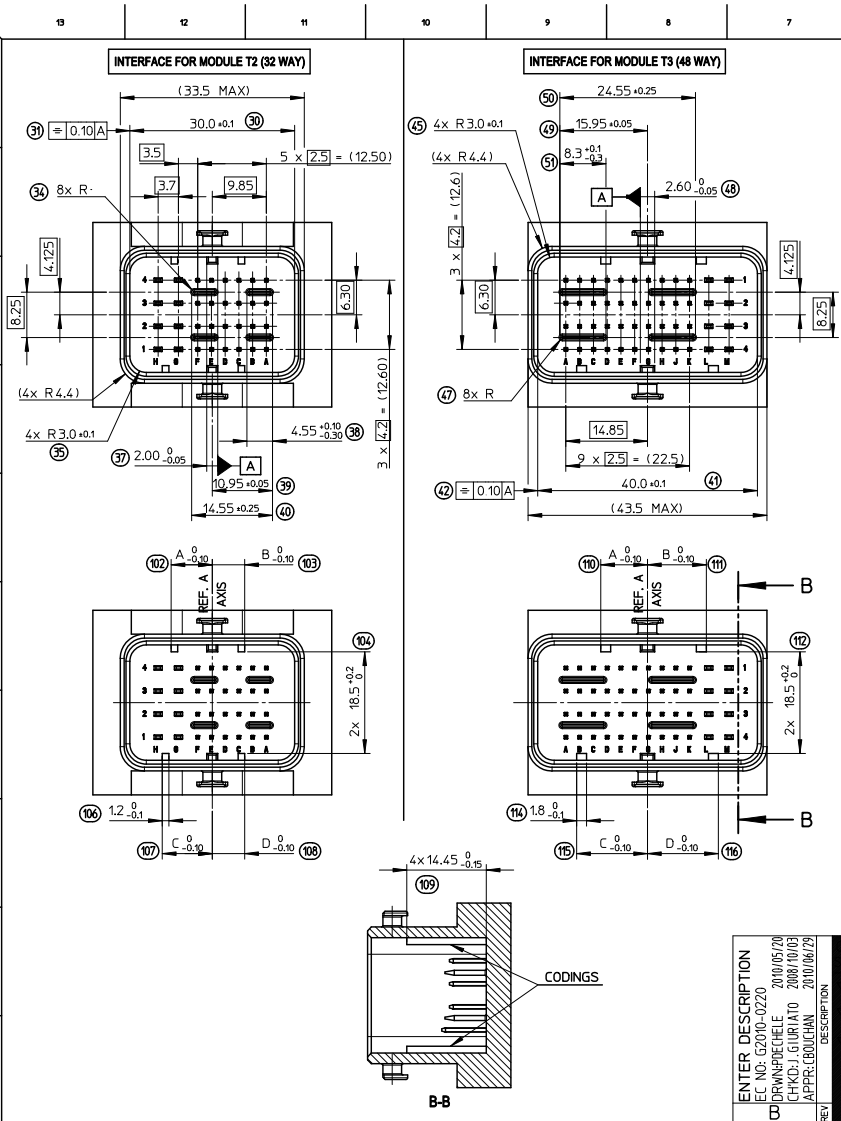
CONNECTOR ON HEADER - OVERALL DIMENSIONS



LEGEND:
FREE VOLUME FOR MANUAL LOCKING AND UNLOCKING DIMENSIONS GIVEN FOR INFORMATION ONLY TO BE CONFIRMED BASED UPON VEHICLE CONFIGURATION.

Id_frame_A2_P_AH_F
Rev. F 2009/06/18

ENTER DESCRIPTION EC NO. GCA 2011-0026 DRAWN: LUO 2010/10/15 CHKD: JGIURIATO 2010/10/18 APPR: PBERG 2010/10/26	QUALITY SYMBOLS ∇=0 ∇=0 ∇=0	GENERAL TOLERANCES (UNLESS SPECIFIED) 4 PLACES ± 0.10 3 PLACES ± 0.15 2 PLACES ± 0.20 1 PLACE ± 0.30 ANGULAR ± 2°	DIMENSION STYLE MM ONLY	SCALE 2:1	DESIGN UNITS METRIC	THIRD ANGLE PROJECTION	TITLE CMC HEADER 32CKT. ASSEMBLED SOLDER VERSION	MOLEX INCORPORATED	SHEET NO. 5 OF 5



HEADERS CODINGS

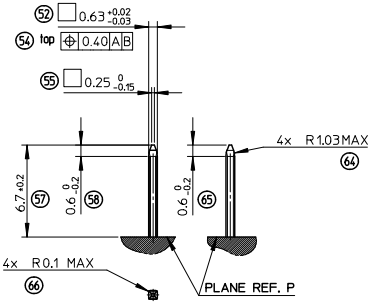
(CODING 2 SHOWN) (CODING 3 SHOWN)

HEADER'S CODINGS FOR MODULE T2 (32W)						HEADER'S CODINGS FOR MODULE T3 (48W)					
COLOR	CODING	DIM. A	DIM. B	DIM. C	DIM. D	COLOR	CODING	DIM. A	DIM. B	DIM. C	DIM. D
BLACK	1	9.1	4.3	5.9	4.3	BLACK	1	12.9	6.3	8.5	6.3
GREY	2	7.5	5.9	9.1	5.9	GREY	2	10.7	8.5	12.9	8.5
BROWN	3	5.9	7.5	9.1	9.1	BROWN	3	8.5	10.7	12.9	12.9
GREEN	4	7.5	9.1	4.3	4.3	GREEN	4	10.7	12.9	6.3	6.3
BLUE	5	4.3	7.5	5.9	5.9	BLUE	5	6.3	10.7	8.5	8.5
YELLOW	6	9.1	7.5	4.3	7.5	YELLOW	6	12.9	10.7	6.3	10.7

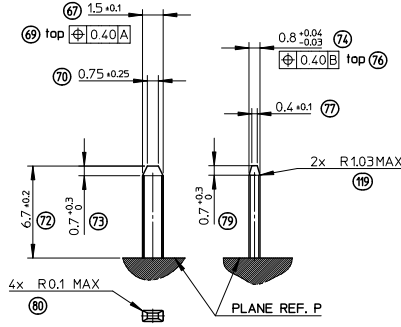
NOTE:
 1- INTERFACE DEFINITION BASED ON NFR13-462 STANDARD.
 2- HEADER: ELASTICITY MODULUS: 8000Mpa min.
 (INITIAL CONDITION BEFORE AGEING)

ENTER DESCRIPTION EC NO: G2010-0220 DRAWN BY: G. DESBRUERES CHKD: J. GIURIATO APPR: C. BOUCHAN	GENERAL TOLERANCES (UNLESS SPECIFIED) mm INCH 4 PLACES ± --- ± --- 3 PLACES ± 0.10 ± --- 2 PLACES ± 0.10 ± --- 1 PLACE ± 0.10 ± --- ANGULAR ± 2°	DIMENSION STYLE MM ONLY DRAWN BY: G. DESBRUERES CHECKED BY: J. GIURIATO APPROVED BY: O. PLESSIS DATE: 2008/10/02 DATE: 2008/10/03 DATE: 2008/10/06	SCALE 2:1 DESIGN UNITS METRIC FIRST ANGLE PROJECTION	TITLE INTERFACES FOR CONNECTOR 32 & 48 CKT CMC GENERIC SALES DRAWING MOLEX INCORPORATED DOCUMENT NO. SD-98644-006	SHEET NO. 1 OF 3	
	DRAFT WHERE APPLICABLE MUST REMAIN WITHIN DIMENSIONS		SIZE A	THIS DRAWING CONTAINS INFORMATION THAT IS PROPRIETARY TO MOLEX INCORPORATED AND SHOULD NOT BE USED WITHOUT WRITTEN PERMISSION		
			MATERIAL NO. N/A			

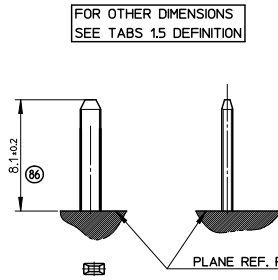
PINS 0.635 DEFINITION
5:1



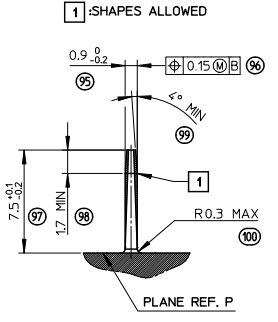
TABS 1.5 DEFINITION
5:1



GROUND TABS 1.5 DEFINITION
5:1

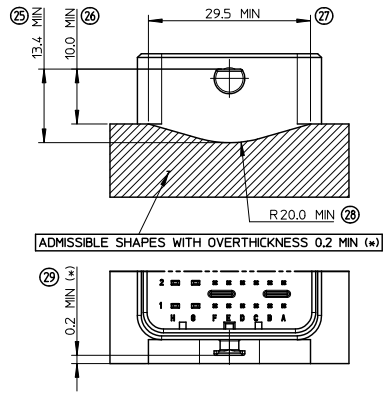


PROTECTION WALL DEFINITION
5:1

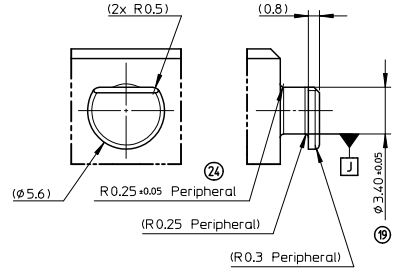


LOCKING AXIS PROTECTION
2:1

MANDATORY OVERTHICKNESS: dimension noted (*) IF THE LOCKING AXIS ARE OUT OF EQUIPMENT OVERALL DIMENSIONS.



LOCKING AXIS DEFINITION
5:1

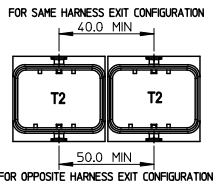


ENTER DESCRIPTION IEC NO. G2010-0220 DRAWN BY: G. DESBRUERES CHKD.: J. GIURIATO APPR.: E. BOUCHAL	GENERAL TOLERANCES (UNLESS SPECIFIED)		DIMENSION STYLE MM ONLY	SCALE 1:1	DESIGN UNITS METRIC	FIRST ANGLE PROJECTION	
	4 PLACES ± --- ± ---	3 PLACES ± --- ± ---	2 PLACES ± 0.10 ± ---	1 PLACE ± 0.10 ± ---	DRAWN BY: G. DESBRUERES DATE: 2008/10/02 CHECKED BY: J. GIURIATO DATE: 2008/10/03 APPROVED BY: D. PLESSIS DATE: 2008/10/06 MATERIAL NO.: N/A		
	ANGULAR ± 2 °		TITLE INTERFACES FOR CONNECTOR 32 & 48 CKT CMC GENERIC SALES DRAWING				
	DRAFT WHERE APPLICABLE MUST REMAIN WITHIN DIMENSIONS		MOLEX INCORPORATED DOCUMENT NO.: SD-98644-006 SHEET NO.: 2 OF 3				
	THIS DRAWING CONTAINS INFORMATION THAT IS PROPRIETARY TO MOLEX INCORPORATED AND SHOULD NOT BE USED WITHOUT WRITTEN PERMISSION						

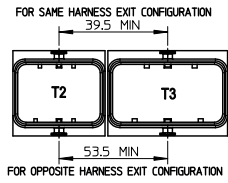
CONNECTOR ON HEADER - OVERALL DIMENSIONS

MULTI-HEADERS LAYOUT

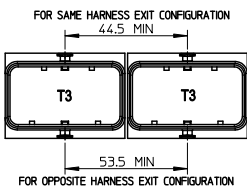
LAYOUT FOR TWO INTERFACES T2 (32W)



LAYOUT FOR TWO INTERFACES T2 (32W) AND T3 (48W)



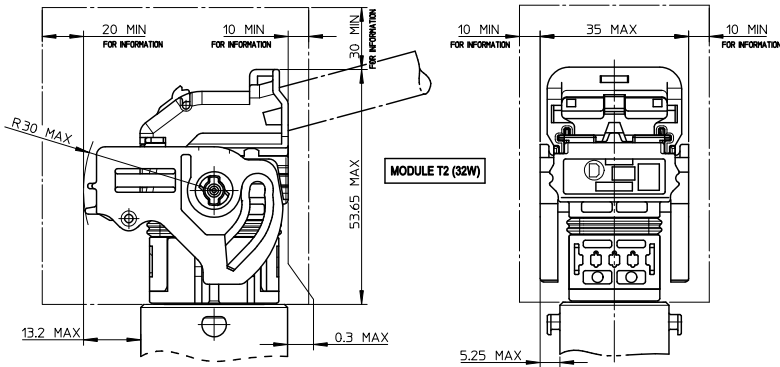
LAYOUT FOR TWO INTERFACES T3 (48W)



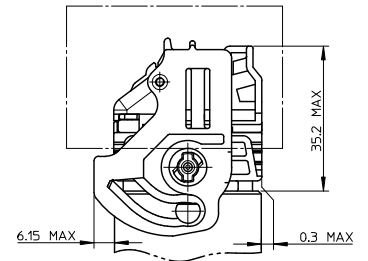
LEGEND:

FREE VOLUME FOR MANUAL LOCKING AND UNLOCKING DIMENSIONS GIVEN FOR INFORMATION ONLY TO BE CONFIRMED BASED UPON VEHICLE CONFIGURATION.

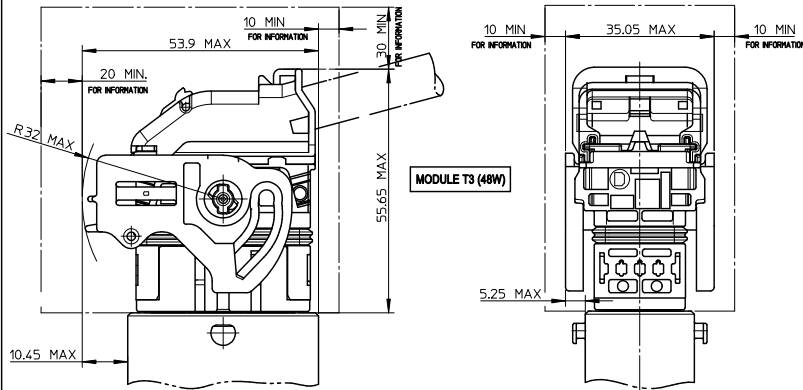
UNLOCKED CONNECTOR - OVERALL DIMENSIONS



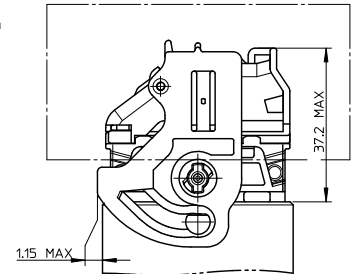
LOCKED CONNECTOR - OVERALL DIMENSIONS



UNLOCKED CONNECTOR - OVERALL DIMENSIONS



LOCKED CONNECTOR - OVERALL DIMENSIONS



NOTE:
1- T2 = 32 WAY / T3 = 48 WAY

ENTER DESCRIPTION	DATE
EC NO: G2010-0220	2010/05/20
DRW: PACHELE	2008/10/03
CHKD: J. GIURIATO	2008/10/03
APPR: BOUCHAN	2010/06/29

GENERAL TOLERANCES (UNLESS SPECIFIED)

	mm	INCH
4 PLACES	± 0.10	± 0.004
3 PLACES	± 0.15	± 0.006
2 PLACES	± 0.20	± 0.008
1 PLACE	± 0.30	± 0.012
ANGULAR ± 2°		

DRAFT WHERE APPLICABLE MUST REMAIN WITHIN DIMENSIONS

DIMENSION STYLE

MM ONLY	DATE
DRAWN BY	G. DESBRUERES
CHECKED BY	J. GIURIATO
APPROVED BY	O. PLESSIS

SCALE

1:1

DESIGN UNITS

METRIC

FIRST ANGLE PROJECTION

TITLE: INTERFACES FOR CONNECTOR 32 & 48 CKT CMC
GENERIC SALES DRAWING

MOLEX INCORPORATED
DOCUMENT NO. SD-98644-006
SHEET NO. 3 OF 3