

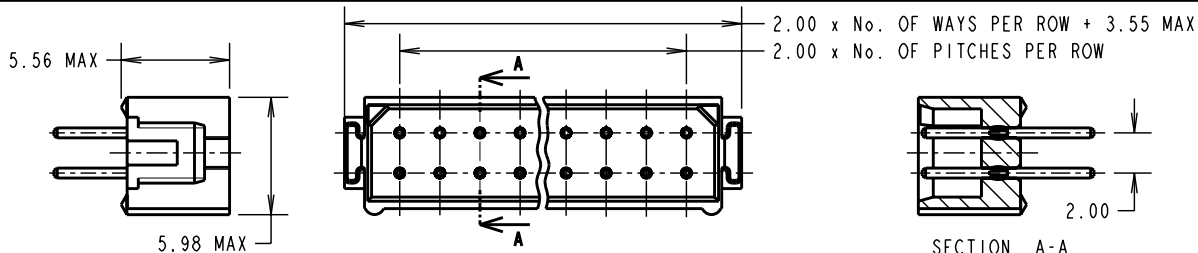
Customer Information Sheet

DRAWING No.: M80-869XXXX SHEET 2 OF 2 IF IN DOUBT - ASK (C) NOT TO SCALE THIRD ANGLE PROJECTION ALL DIMENSIONS IN mm

BRITISH STANDARD ORDER CODE:
TO BS9525 F0033
B5743-2XX-M-T-X

TOTAL No. OF WAYS
04, 06, 08, 10, 12, 14, 16,
18, 20, 26, 34, 44

FINISH:
0 = SELECTIVE GOLD
2 = GOLD

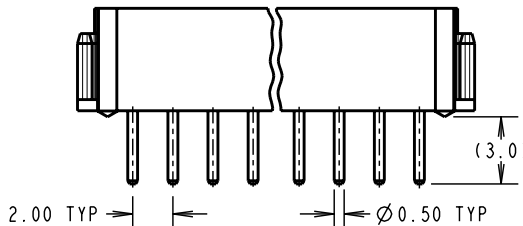


NOTES:
1. 2-OFF STRAIN RELIEF STRAPS M80-0030006
CAN BE ORDERED SEPARATELY IF REQUIRED.
2. FOR RoHS COMPLIANT PRODUCT USE M80-854XXXX

SPECIFICATIONS:
MATERIAL:
MOULDING = GLASS FILLED POLYESTER, UL94V-0
CONTACTS = PHOSPHOR BRONZE
FINISH:
CONTACTS:
05 = 0.75µ GOLD
22 = 0.75µ GOLD ON CONTACT AREA,
3.0µ 90/10 TIN/LEAD ON TAILS

ENVIRONMENTAL:
TEMPERATURE RANGE = -55°C TO +125°C
MECHANICAL:
DURABILITY = 500 OPERATIONS

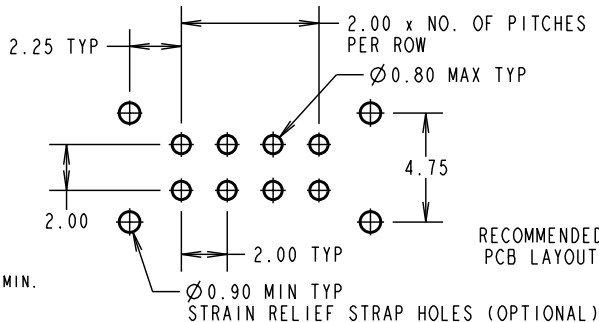
PACKING:
TUBE
ELECTRICAL:
CURRENT RATING AT 25°C = 3.0A MAX.
CURRENT RATING AT 85°C = 2.2A MAX.
WORKING VOLTAGE = 120V AC/DC
VOLTAGE PROOF = 360V AC/DC
CONTACT RESISTANCE (INITIAL) = 20 mΩ MAX.
CONTACT RESISTANCE (AFTER CONDITIONING) = 25 mΩ MAX.
INSULATION RESISTANCE (INITIAL) = 1000 MΩ MIN.
INSULATION RESISTANCE (AFTER CONDITIONING) = 100 MΩ MIN.
FOR COMPLETE SPECIFICATION, SEE COMPONENT
SPECIFICATION C005XX (LATEST ISSUE)



ORDER CODE:
M80-869XXXX

TOTAL No. OF WAYS
04, 06, 08, 10, 12, 14, 16,
18, 20, 26, 34, 44

FINISH:
05 = GOLD
22 = SELECTIVE GOLD



CP	14	01.10.09	10303
NAME	ISS.	DATE	C/NOTE
APPROVED: C. PENROSE			
CHECKED: R. ADDE			
DRAWN: W. J. BOURNE			
CUSTOMER REF.:			
ASSEMBLY DRG:			

HARWIN

HARWIN USA
TEL: 603 893 5376
FAX: 603 893 5396
mis@harwin.com

HARWIN Europe (UK)
TEL: 023 9231 4545
FAX: 023 9231 4590
mis@harwin.co.uk

HARWIN Asia
TEL: +65 6 779 4909
FAX: +65 6 779 3868
mis@harwin.com.sg

THIS DRAWING AND ANY INFORMATION OR DESCRIPTIVE MATTER SET OUT HEREON ARE CONFIDENTIAL AND COPYRIGHT PROPERTY OF THE HARWIN GROUP AND MUST NOT BE DISCLOSED, LOANED, COPIED OR USED FOR MANUFACTURING, TENDERING OR FOR ANY OTHER PURPOSE WITHOUT THEIR WRITTEN PERMISSION.

TOLERANCES
X. = ±1mm
X.X = ±0.25mm
X.XX = ±0.10mm
X.XXX = ±0.01mm
ANGLES = ±5°
UNLESS STATED

MATERIAL:
SEE ABOVE

FINISH:
SEE ABOVE

S/AREA:
mm²

TITLE: DATAMATE 2mm PITCH
VERTICAL PC TAIL DIL PLUG
ASSEMBLY - UNLATCHED

DRAWING NUMBER:
M80-869XXXX

SHT
2
OF
2