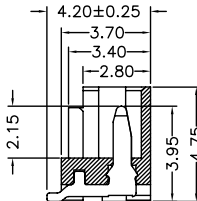
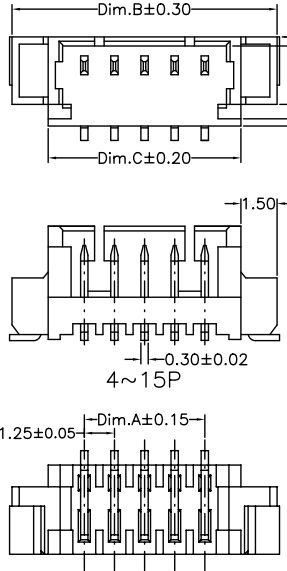
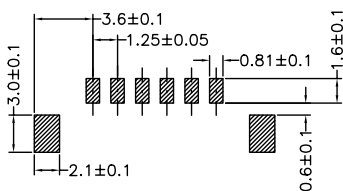
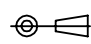

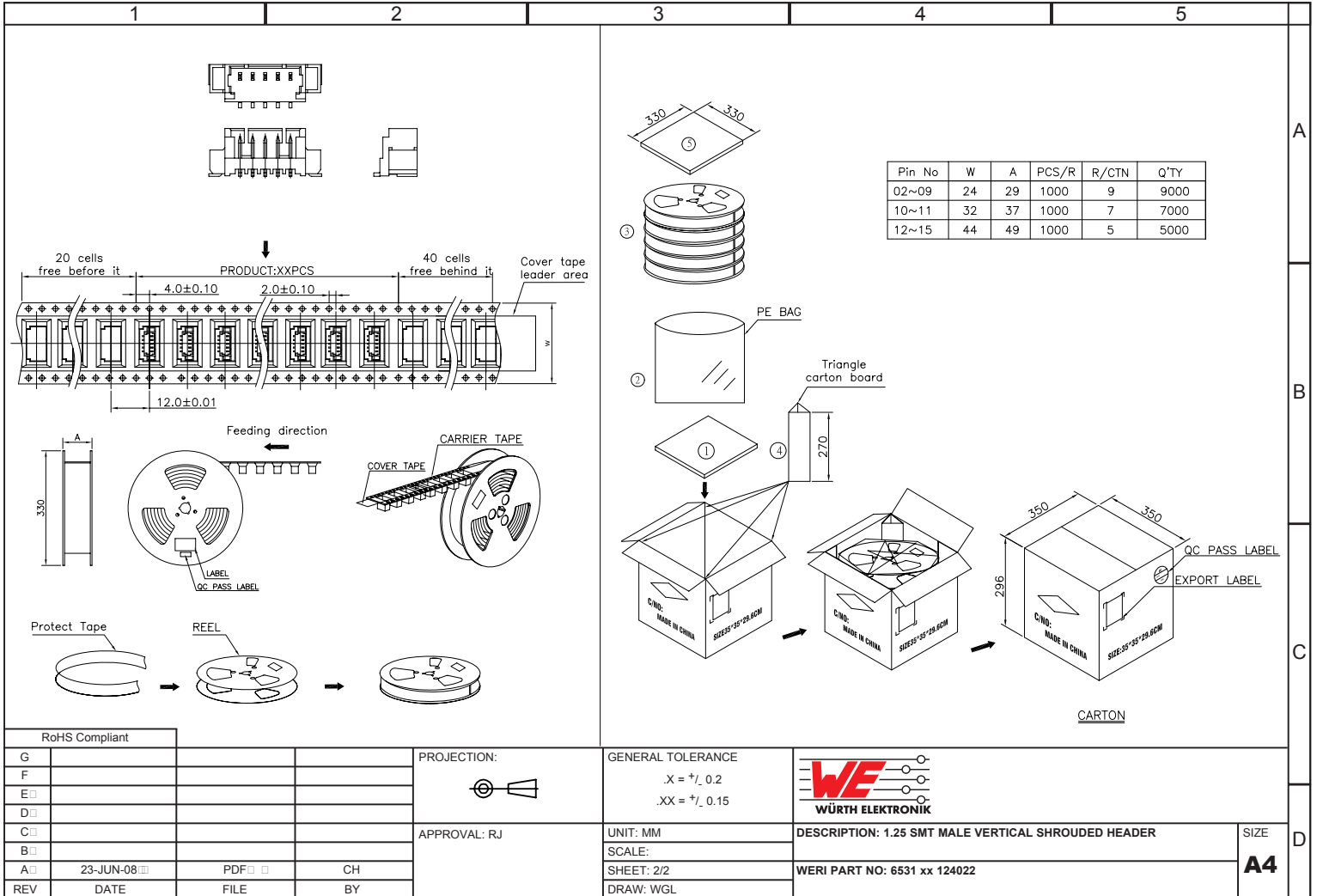


1	2	3	4	5	
		 <p>PCB LAYOUT - COMPONENT VIEW</p>	<p>TECHNICAL CHARACTERISTICS</p> <p>MATERIAL  INSULATOR: NYLON 46  COLOR: BEIGE  CONTACT MATERIAL: COPPER ALLOY  CONTACT TYPE: STAMPED  CONTACT PLATING: TIN  QUALITY CLASS: 25 MATING CYCLES  PITCH: 1.25MM</p> <p>ENVIRONMENTAL  OPERATING TEMPERATURE: -25 UP TO 85°C  FLAMABILITY RATING: UL94-V0  COMPLIANCE: LEAD FREE AND ROHS</p> <p>ELECTRICAL  CURRENT RATING: 1A  WORKING VOLTAGE: 125V AC  INSULATOR RESISTANCE: &gt;100 MOHM  DIELECTRIC WITHSTANDING VOLTAGE: 250V AC/MN  CONTACT RESISTANCE: 20 mOHM MAX</p> <p>SOLDERING  REFLOW PROCESS</p> <p>PACKAGING  TAPE AND REEL</p> <p>DIMENSION  A = 1.25 x (NB PIN - 1)  B = 1.25 x (NB PIN + 1) + 3.5  C = 1.25 x (NB PIN + 1) + 0.5</p>	<p>A</p> <p>B</p> <p>C</p>	
RoHS Compliant					
G			PROJECTION: 	GENERAL TOLERANCE .X = +/- 0.2 .XX = +/- 0.15	 <p>DESCRIPTION: 1.25 SMT MALE VERTICAL SHROUDED HEADER</p> <p>SIZE <b>A4</b></p>
F			APPROVAL: RJ	UNIT: MM	
E				SCALE:	
D	23-JUN-08	PDF	CH	SHEET: 1/2	
REV	DATE	FILE	BY	DRAW: CEL KING	
WERI PART NO: 6531 xx 124022					



RoHS Compliant

G			
F			
E			
D			
C			
B			
A	23-JUN-08	PDF	CH
REV	DATE	FILE	BY

PROJECTION:	
APPROVAL: RJ	

GENERAL TOLERANCE	.X = +/- 0.2 .XX = +/- 0.15
UNIT: MM	
SCALE:	
SHEET: 2/2	
DRAW: WGL	

	DESCRIPTION: 1.25 SMT MALE VERTICAL SHROUDED HEADER
WERI PART NO: 6531 xx 124022	SIZE
	<b>A4</b>

A  
B  
C  
D