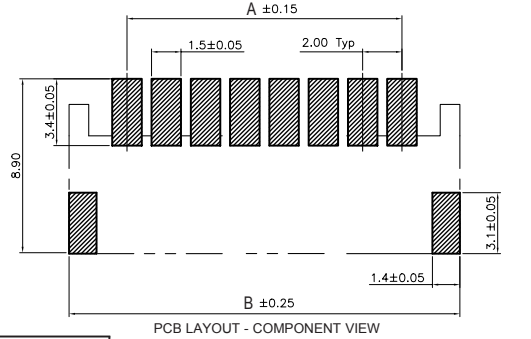
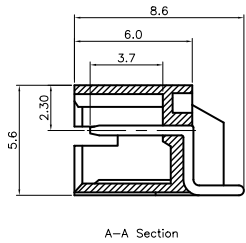
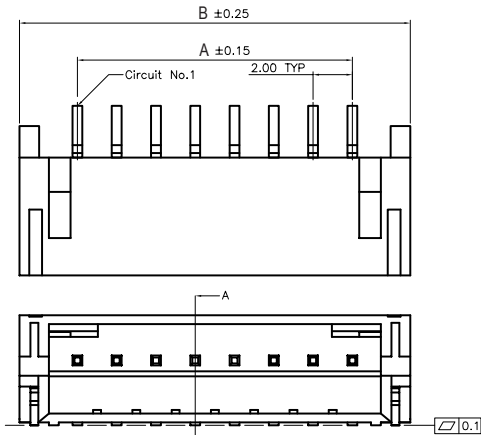


1 2 3 4 5



TECHNICAL CHARACTERISTICS

MATERIAL
 INSULATOR: NYLON 9T
 FLAMABILITY RATING: UL94-V0
 COLOR: BEIGE
 CONTACT MATERIAL: COPPER ALLOY
 CONTACT TYPE: STAMPED
 CONTACT PLATING: TIN
 QUALITY CLASS: 25 MATING CYCLES
 PITCH: 2.00MM

ENVIRONMENTAL
 OPERATING TEMPERATURE: -25 UP TO 85°C
 COMPLIANCE: LEAD FREE AND ROHS

ELECTRICAL
 CURRENT RATING: 2A
 WORKING VOLTAGE: 125V AC
 INSULATOR RESISTANCE: >1000 MOHM
 DIELECTRIC WITHSTANDING VOLTAGE: 800V AC/MN
 CONTACT RESISTANCE: 20 mOHM MAX

SOLDERING
 REFLOW PROCESS

PACKAGING
 TAPE AND REEL

DIMENSION
 A = 2.00 x (NB PIN - 1)
 B = 2.00 x (NB PIN-1) + 6

G			
F			
E			
D			
C			
B	28-JAN-09	B DIMENSION	JP
A	23-JUN-08	PDF	CH
REV	DATE	FILE	BY

PROJECTION:

APPROVAL: RJ

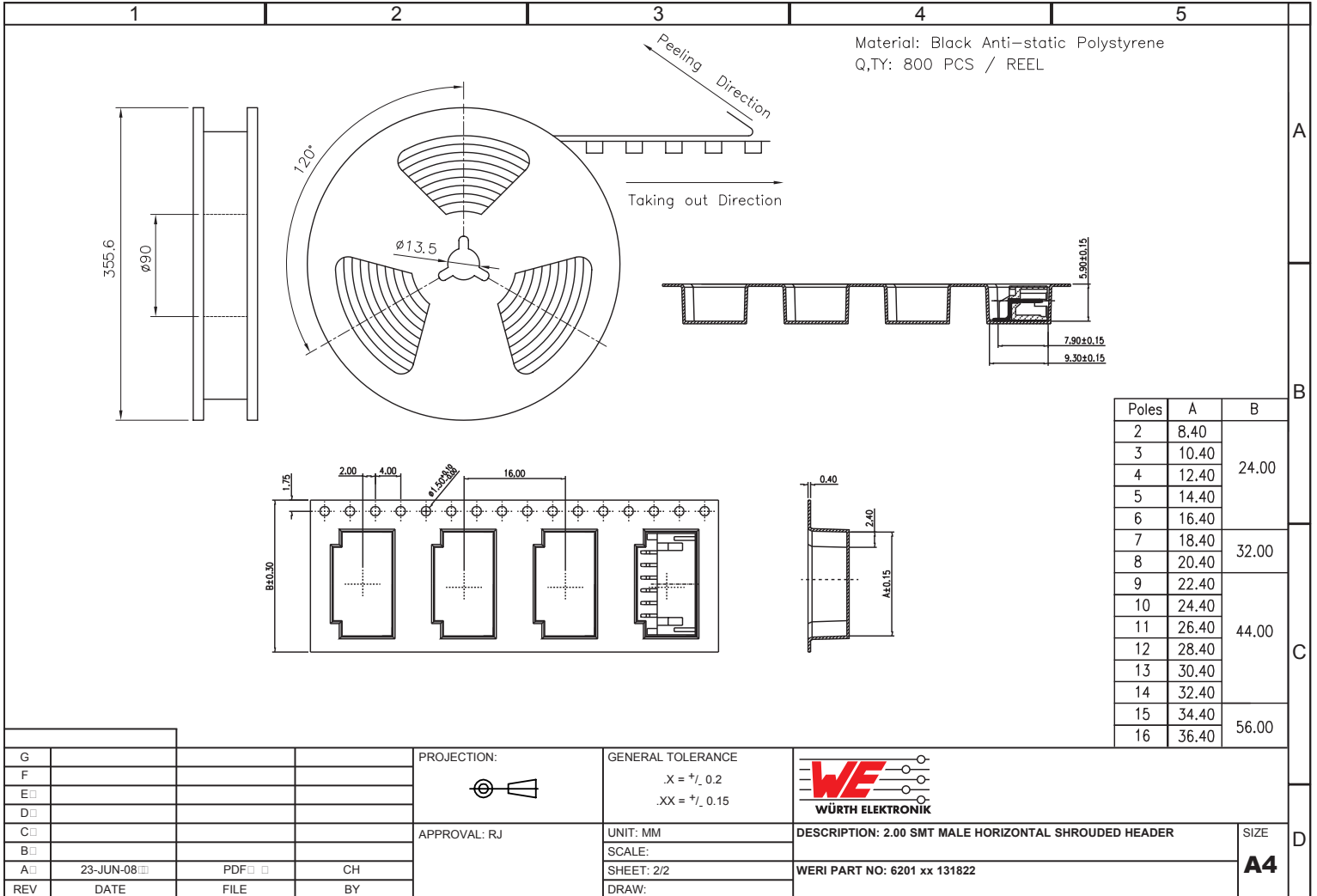
GENERAL TOLERANCE
 .X = +/-. 0.2
 .XX = +/-. 0.15

UNIT: MM
 SCALE:
 SHEET: 1/2
 DRAW:

DESCRIPTION: 2.00 SMT MALE HORIZONTAL SHROUDED HEADER

WERI PART NO: 6201 xx 131822

SIZE
A4



G				PROJECTION:	GENERAL TOLERANCE		DESCRIPTION: 2.00 SMT MALE HORIZONTAL SHROUDED HEADER WERI PART NO: 6201 xx 131822	SIZE A4
F					.X = +/- 0.2 .XX = +/- 0.15			
E				APPROVAL: RJ	UNIT: MM			
D					SCALE:			
C					SHEET: 2/2			
B					DRAW:			
A	23-JUN-08	PDF	CH					
REV	DATE	FILE	BY					