

PCB LAYOUT - COMPONENT VIEW

TECHNICAL CHARACTERISTICS

MATERIAL
 INSULATOR: NYLON 6T
 FLAMABILITY RATING: UL94-V0
 COLOR: BEIGE
 CONTACT MATERIAL: COPPER ALLOYS
 CONTACT TYPE: STAMPED
 CONTACT PLATING: TIN
 QUALITY CLASS: 25 MATING CYCLES
 PITCH: 1.50MM

ENVIRONMENTAL
 OPERATING TEMPERATURE: -25 UP TO 85°C
 COMPLIANCE: LEAD FREE AND ROHS

ELECTRICAL
 CURRENT RATING: 1A MAX
 WORKING VOLTAGE: 50V AC
 INSULATOR RESISTANCE: >100 MOHM
 DIELECTRIC WITHSTANDING VOLTAGE: 500V AC/MN
 CONTACT RESISTANCE: 20 mOHM MAX

STANDARD
 CERTIFIED: E323964 / MODEL NUMBER 648-R

SOLDERING:
 REFLOW PROCESS ONLY

PACKAGING
 TAPE & REEL

DIMENSION

NB PIN	A	B	NB PIN	A	B
2	1.50	6.00	8	10.50	15.00
3	3.00	7.50	9	12.00	16.50
4	4.50	9.00	10	13.50	18.00
5	6.00	10.50	11	15.00	19.50
6	7.50	12.00	12	16.50	21.00
7	9.00	13.50	13	18.00	22.50

RoHS Compliant

G			
F			
E			
D			
C	24-NOV-10	COPLANARITY	GG
B	17-NOV-09	STANDARD	JP
A	23-JUN-08	PDF	CH
REV	DATE	FILE	BY

PROJECTION:



GENERAL TOLERANCE

.X = +/- 0.2

.XX = +/- 0.15

APPROVAL: RJ

UNIT: MM

SCALE:

SHEET: 1/2

DRAW: ANDY



DESCRIPTION: 1.50 SMT MALE HORIZONTAL SHROUDED HEADER

WERI PART NO: 648 1xx 131 822

SIZE

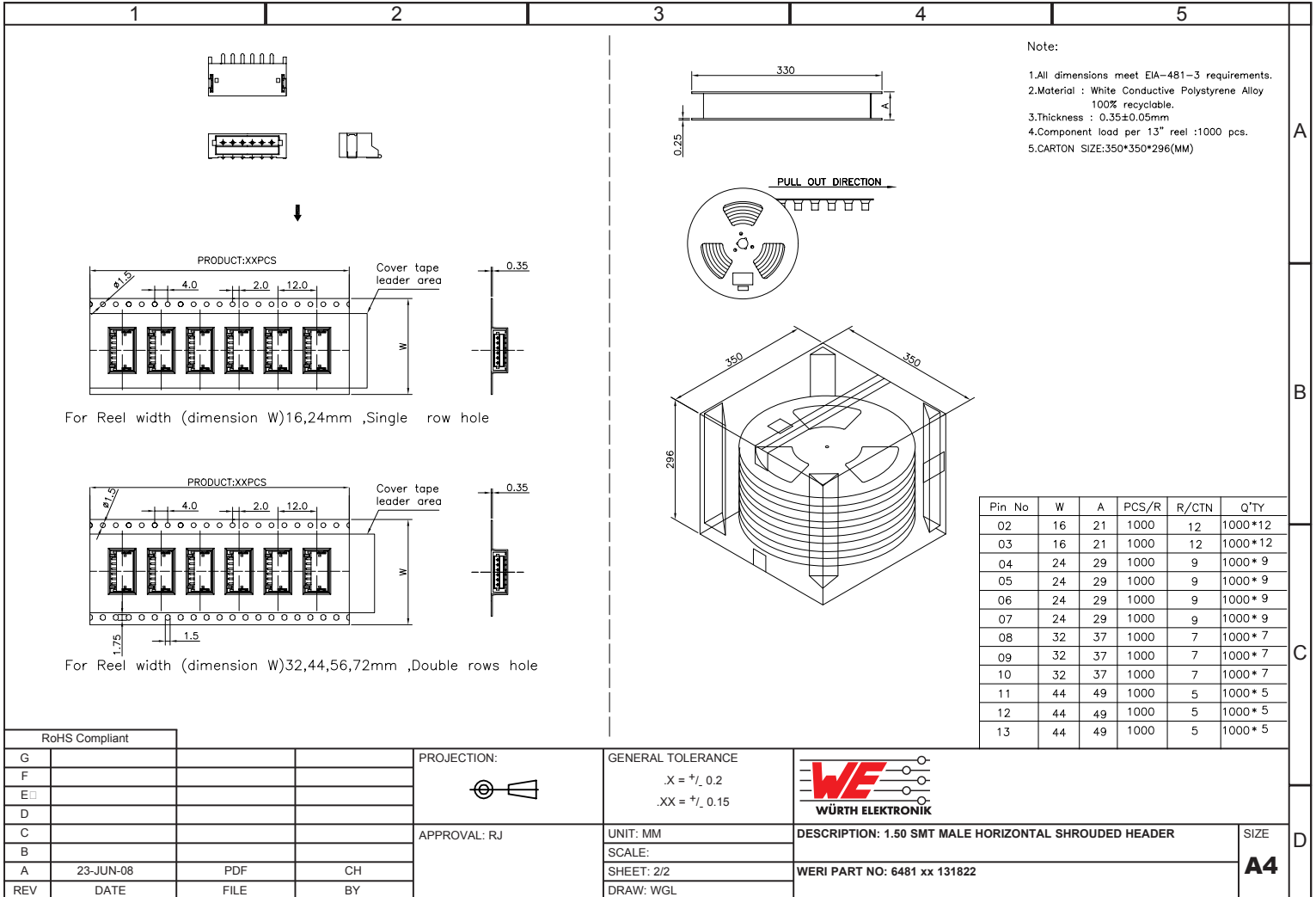
A4

A

B

C

D



RoHS Compliant

G			
F			
E			
D			
C			
B			
A	23-JUN-08	PDF	CH
REV	DATE	FILE	BY

PROJECTION:	
APPROVAL:	RJ

GENERAL TOLERANCE	.X = +/- 0.2 .XX = +/- 0.15
UNIT:	MM
SCALE:	
SHEET:	2/2
DRAW:	WGL

	DESCRIPTION: 1.50 SMT MALE HORIZONTAL SHROUDED HEADER	SIZE
	WERI PART NO: 6481 xx 131822	A4