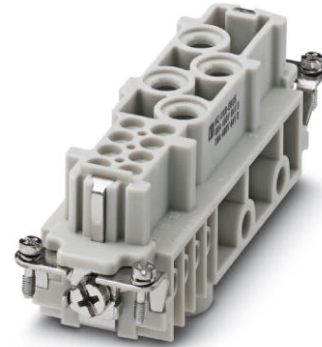



# HC-K 4/8-EBUS

Order No.: 1679320




<http://eshop.phoenixcontact.de/phoenix/treeViewClick.do?UID=1679320>

HEAVYCON female insert, K4/8 series, for 4 power and 8 control contacts, screw connection without wire protection

Commercial data	
GTIN (EAN)	 4 017918 163563
sales group	D007
Pack	1 pcs.
Customs tariff	85366990
Catalog page information	Page 446 (PC-2009)

**Product notes**

WEEE/RoHS-compliant since:  
08/16/2006



<http://www.download.phoenixcontact.com>  
Please note that the data given here has been taken from the online catalog. For comprehensive information and data, please refer to the user documentation. The General Terms and Conditions of Use apply to Internet downloads.

Technical data	
General data	
Note	For housing HC-B24
Connection method	Screw connection (power contacts)
	Screw connection (control contacts)

Tightening torque	2 Nm (1.5 mm <sup>2</sup> - 2.5 mm <sup>2</sup> )
	3 Nm (4 - 16 mm <sup>2</sup> )
	0.5 Nm (control contacts)
Ambient temperature (operation)	-40 °C ... 125 °C
Pollution degree	3
Surge voltage category	III
Insertion/withdrawal cycles	≥ 500
Design	K4/8
Conductor cross-section	1.5 mm <sup>2</sup> ... 16 mm <sup>2</sup> (power contacts)
	0.5 mm <sup>2</sup> ... 2.5 mm <sup>2</sup> (control contacts)
Connection cross-section AWG	16 ... 6 (power contacts)
	20 ... 14 (control contacts)
Stripping length of the individual wire	14 mm
	7 mm
Assembly instructions	Plug-in connections may only be operated only when there is no load/voltage.

#### Material data

Inflammability class acc. to UL 94	HB
Contact material	Cu alloy
Material of contact surface, power contact	Ag
Material of contact surface, control contact	Ag
Contact carrier material	PA

#### Electrical characteristics

Rated voltage (III/3)	400 V (power contacts)
	400 V (control contacts)
Rated surge voltage	6 kV (power contacts)
	6 kV (control contacts)
Rated current	80 A (power contacts)
	16 A (control contacts)

#### Certificates / Approvals

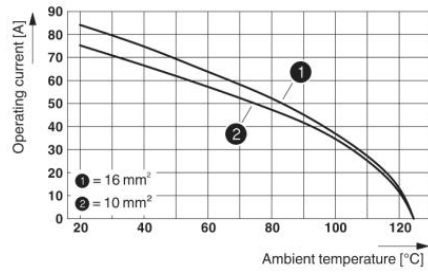


Certification

GOST, UL

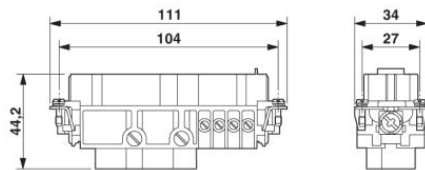
## Diagrams/Drawings

### Diagram

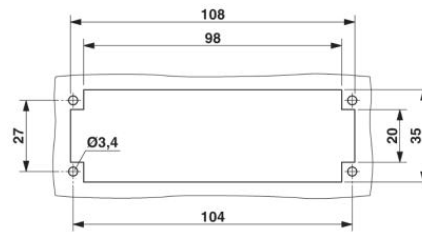


Derating diagram

### Dimensioned drawing



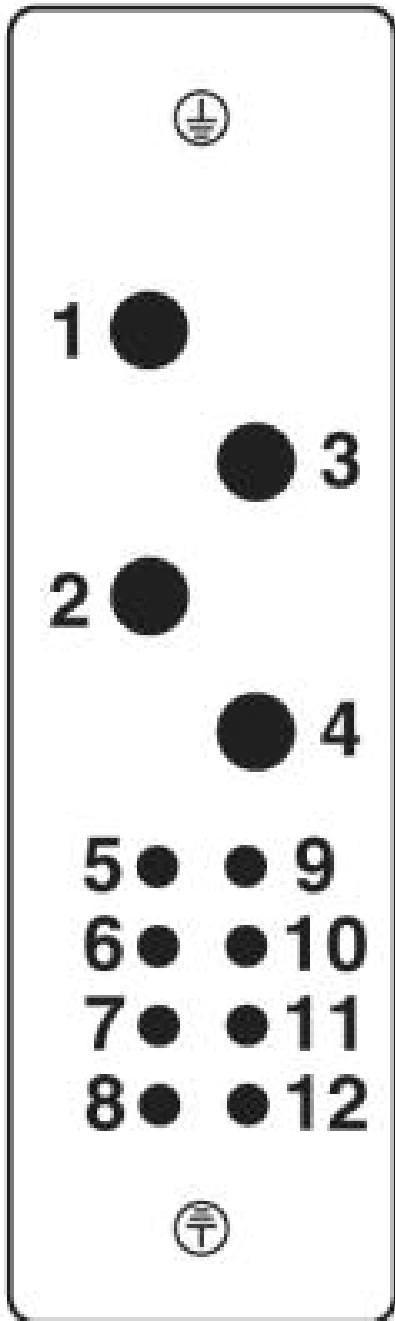
Female insert



Panel cutout

Schematic diagram

---



**Address**

PHOENIX CONTACT Deutschland GmbH  
Flachsmarktstr. 8  
32825 Blomberg, Germany  
Phone +49 5235 3 12000  
Fax +49 5235 3 41200  
<http://www.phoenixcontact.de>



© 2010 Phoenix Contact  
Technical modifications reserved;