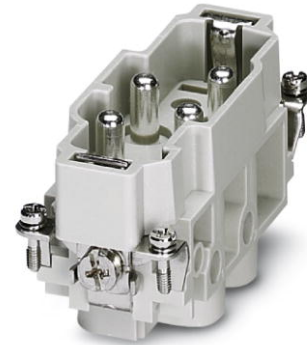


HC-K 4/0-ESTS


Order No.: 1679414



<http://eshop.phoenixcontact.de/phoenix/treeViewClick.do?UID=1679414>

HEAVYCON male insert, K4/0 series, 4-pos., screw connection

Commercial data

GTIN (EAN)	 4 017918 168858
sales group	D007
Pack	1 pcs.
Customs tariff	85366990
Catalog page information	Page 445 (PC-2009)

Product notes

WEEE/RoHS-compliant since:
08/08/2006



<http://www.download.phoenixcontact.com>
Please note that the data given here has been taken from the online catalog. For comprehensive information and data, please refer to the user documentation. The General Terms and Conditions of Use apply to Internet downloads.

Technical data

General data

Note	For HEAVYCON-ADVANCE housings of B16 type and HEAVYCON housings of B16 and B32 types
Connection method	Screw connection

Tightening torque	3 Nm (4.0 mm ² ... 16 mm ²)
	2 Nm (2.5 mm ²)
	1.2 Nm (1.5 mm ²)
Ambient temperature (operation)	-40 °C ... 125 °C
Pollution degree	3
Surge voltage category	III
Insertion/withdrawal cycles	≥ 500
Design	K4/0
Conductor cross-section	1.5 mm ² ... 16 mm ²
Connection cross-section AWG	16 ... 6
Stripping length of the individual wire	14 mm

Material data

Inflammability class acc. to UL 94	V0
Contact material	Cu alloy
Contact surface material	Ag
Contact carrier material	PC

Electrical characteristics

Rated voltage (III/3)	830 V
Rated surge voltage	8 kV
Rated current	80 A (power contacts)

Certificates / Approvals

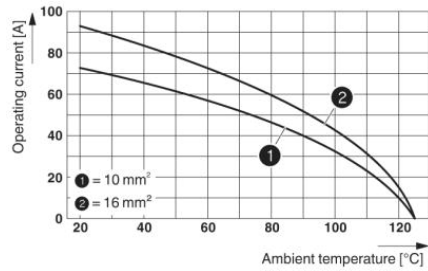


Certification

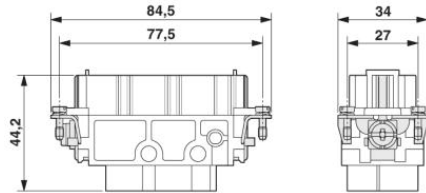
CSA, GOST, UL

Diagrams/Drawings

Diagram

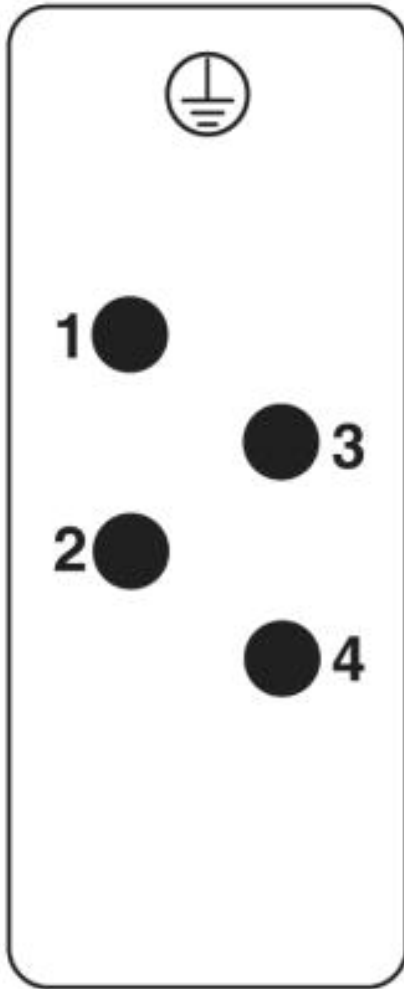


Dimensioned drawing



Male insert

Schematic diagram



Address

PHOENIX CONTACT Deutschland GmbH
Flachsmarktstr. 8
32825 Blomberg, Germany
Phone +49 5235 3 12000
Fax +49 5235 3 41200
<http://www.phoenixcontact.de>



© 2010 Phoenix Contact
Technical modifications reserved;