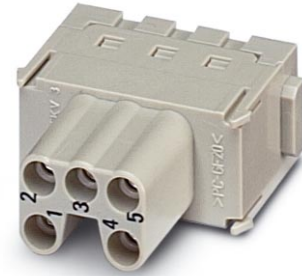


# HC-M-05-MOD-BUZ


Order No.: 1647721



<http://eshop.phoenixcontact.de/phoenix/treeViewClick.do?UID=1647721>

HEAVYCON contact insert module, female, 5-pos., spring-cage connection

## Commercial data

GTIN (EAN)	 4 017918 969561
sales group	D042
Pack	2 pcs.
Customs tariff	85366990
Catalog page information	Page 455 (PC-2009)

## Product notes

WEEE/RoHS-compliant since:  
06/13/2006



<http://www.download.phoenixcontact.com>  
Please note that the data given here has been taken from the online catalog. For comprehensive information and data, please refer to the user documentation. The General Terms and Conditions of Use apply to Internet downloads.

## Technical data

### Electrical characteristics

Note	For housing HC-B6 to B48, for housing HC-ADVANCE-B6 to B24, hinged retaining frame HC-M-MHR... necessary
Rated voltage (III/3)	400 V
Rated current	16 A
Rated surge voltage	6 kV
Ambient temperature (operation)	-40 °C ... 125 °C
Number of positions	5

**Mechanical characteristics**

Conductor cross-section	0.14 mm <sup>2</sup> ... 2.5 mm <sup>2</sup>
Connection cross-section AWG	26 ... 14
Stripping length of the individual wire	7 mm
Insertion/withdrawal cycles	≥ 500

**General characteristics**

Number of module slots	1
Connection method	Spring-cage connection
Inflammability class acc. to UL 94	V0
Pollution degree	3
Surge voltage category	III
Assembly instructions	Housing height ≥ 52 mm. Plug-in connections may only be operated only when there is no load/voltage.

**Material data**

Contact material	Copper alloy
Contact surface material	Ag
Contact carrier material	PC

**Certificates / Approvals**

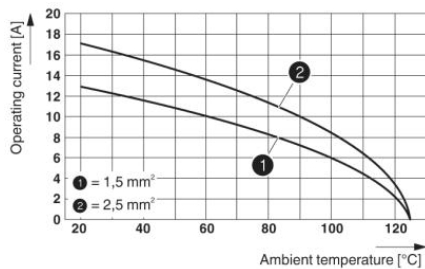


Certification

UL

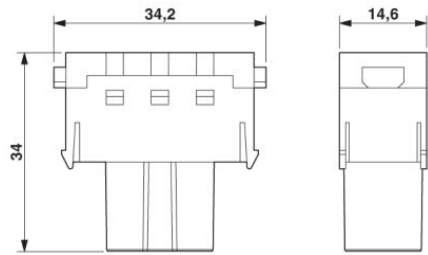
**Diagrams/Drawings**

Diagram



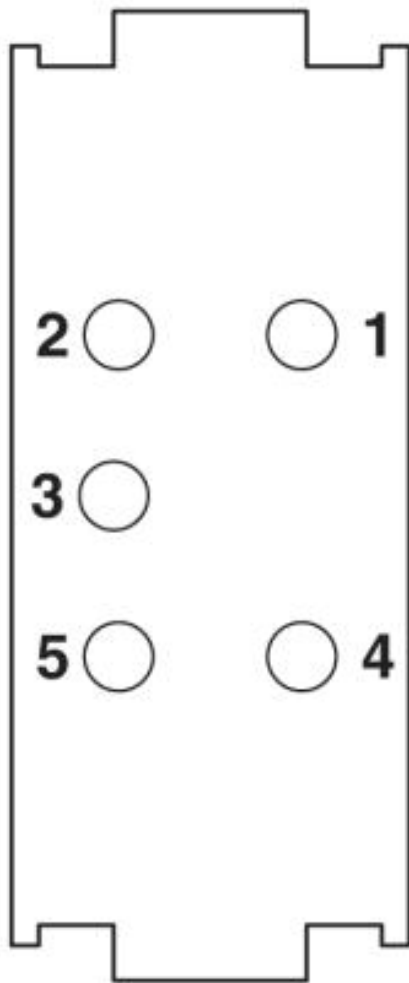
Derating diagram (6 modules in HC-B 24 housing)

Dimensioned drawing



Female insert

Schematic diagram



Connector pin assignment, connection side

**Address**

PHOENIX CONTACT Deutschland GmbH  
Flachsmarktstr. 8  
32825 Blomberg, Germany  
Phone +49 5235 3 12000  
Fax +49 5235 3 41200  
<http://www.phoenixcontact.de>



© 2010 Phoenix Contact  
Technical modifications reserved;