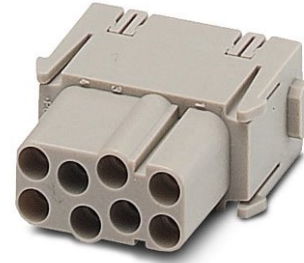




HC-M-08-MOD-BU

Order No.: 1605003



<http://eshop.phoenixcontact.de/phoenix/treeViewClick.do?UID=1605003>

HEAVYCON contact insert module, female, 8-pos., crimp connection

Commercial data		Product notes
GTIN (EAN)	 4 017918 893323	WEEE/RoHS-compliant since: 01/18/2007 
sales group	D042	http://www.download.phoenixcontact.com Please note that the data given here has been taken from the online catalog. For comprehensive information and data, please refer to the user documentation. The General Terms and Conditions of Use apply to Internet downloads.
Pack	2 pcs.	
Customs tariff	85369010	
Catalog page information	Page 457 (PC-2009)	

Technical data	
Electrical characteristics	
Note	For housing HC-B6 to B48, for housing HC-ADVANCE-B6 to B24, hinged retaining frame HC-M-MHR... necessary, crimp contacts CK2,5-ED... (crimp contacts not in scope of supply)
Rated voltage (III/3)	400 V
Rated current	16 A
Rated surge voltage	6 kV
Ambient temperature (operation)	-40 °C ... 125 °C

Number of positions	8
---------------------	---

Mechanical characteristics

Conductor cross-section	0.5 mm ² ... 4 mm ²
Connection cross-section AWG	20 ... 12
Stripping length of the individual wire	7.5 mm
Insertion/withdrawal cycles	≥ 500

General characteristics

Number of module slots	1
Connection method	Crimp connection
Inflammability class acc. to UL 94	V0
Pollution degree	3
Surge voltage category	III
Assembly instructions	Housing height ≥ 52 mm.Plug-in connections may only be operated only when there is no load/voltage.

Material data

Contact material	Copper alloy
Contact surface material	Ag (alternatively Au)
Contact carrier material	PC

Certificates / Approvals



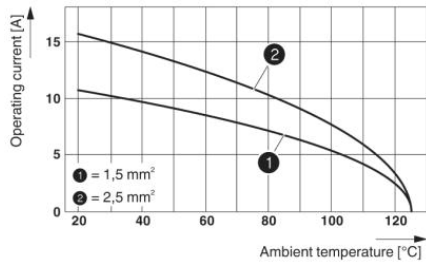
Certification GOST, UL

Accessories

Item	Designation	Description
1584693	CK2,5-ED-BB	Dummy socket for contact carrier with turned CK 1,6-ED.. female contacts

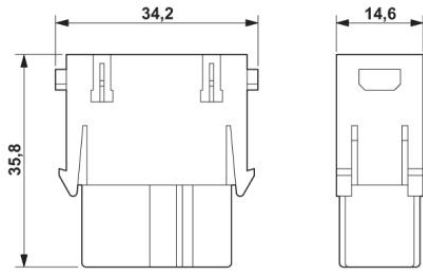
Diagrams/Drawings

Diagram



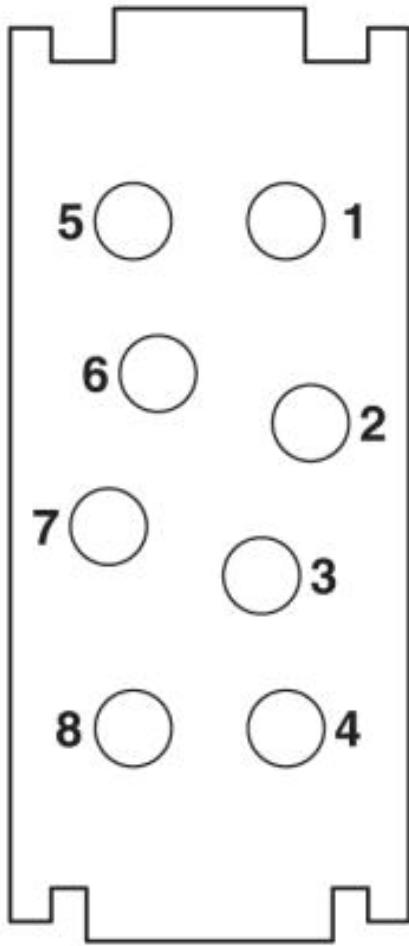
Derating diagram (6 modules in HC-B 24 housing)

Dimensioned drawing



Female insert

Schematic diagram



Address

PHOENIX CONTACT Deutschland GmbH
Flachsmarktstr. 8
32825 Blomberg, Germany
Phone +49 5235 3 12000
Fax +49 5235 3 41200
<http://www.phoenixcontact.de>



© 2010 Phoenix Contact
Technical modifications reserved;