


**SACC-DSIV-M12MS-5CON-L 90**

Order No.: 1694224

<http://eshop.phoenixcontact.de/phoenix/treeViewClick.do?UID=1694224>

Sensor/actuator flush-type connector, plug, 5-pos., M12, A-coded, rear/screw mounting with M12 thread, with polarity protection, with angled solder connection

**Commercial data**

GTIN (EAN)	
sales group	D125
Pack	10 pcs.
Customs tariff	85366990
Catalog page information	Page 31 (PC-2009)

**Product notes**

WEEE/RoHS-compliant since:  
01/09/2006



<http://www.download.phoenixcontact.com>  
Please note that the data given here has been taken from the online catalog. For comprehensive information and data, please refer to the user documentation. The General Terms and Conditions of Use apply to Internet downloads.

**Technical data****General data**

Rated current at 40°C	4 A
Rated voltage	60 V
Number of positions	5
Volume resistance	≤ 5 mΩ

---

Insulation resistance	≥ 100 MΩ
Ambient temperature (operation)	-25 °C ... 85 °C (Male connector / female connector)

**General characteristics**

Standards/regulations	M12 connector IEC 61076-2-101
Coding	A - standard
Surge voltage category	II
Pollution degree	3
Degree of protection	IP67
Contact material	CuZn
Contact surface material	Au
Contact carrier material	PA 66
Material, knurls	Nickel-plated brass
Sealing material	NBR
Mounting type	Rear mounting M12 x 1 With locking nut
Type of connection	Solder pins
Status display	No

**Certificates / Approvals**

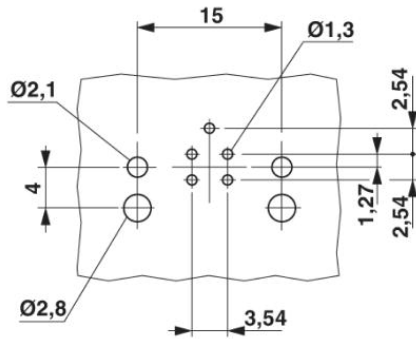


Certification

GOST

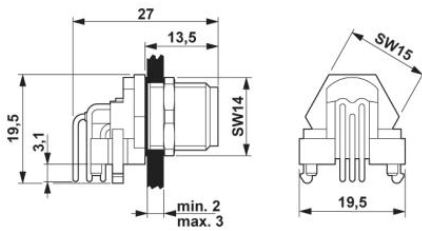
### Diagrams/Drawings

Drilling plan/solder pad geometry



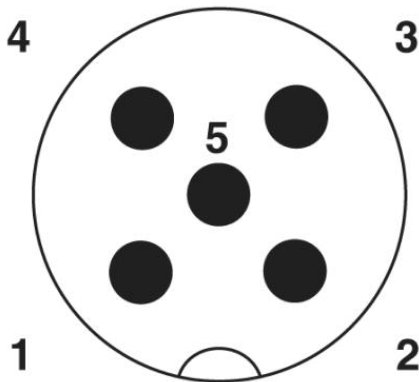
M12 flush-type connector

Dimensioned drawing



M12 flush-type connector

Schematic diagram



Pin assignment M12 male connector, 5-pos., A-coded, male side

**Address**

PHOENIX CONTACT Inc., USA  
586 Fulling Mill Road  
Middletown, PA 17057, USA  
Phone (800) 888-7388  
Fax (717) 944-1625  
<http://www.phoenixcon.com>



© 2010 Phoenix Contact  
Technical modifications reserved;