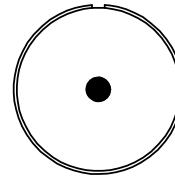
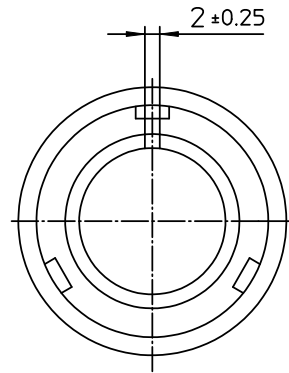






| NO. | MASSE / DIMENSION |
|-----|-------------------|
| A | 29.2 |
| B1 | 9.1 |
| B2 | - |
| C | 55 |



| NO. | BESCHREIBUNG / DESCRIPTION |
|-----|---|
| 2 | ISOLIERKÖRPER BUCHSE / INSULATOR SOCKET |
| 3 | DICHTKÖRPER / GROMMET |
| 4 | ENDRING / ENDRING |
| 6 | KONTAKTBUCHSE / CONTACT SOCKET |
| 7 | ZYLINDERGHÄUSE / BARREL |
| 9 | ÜBERWURFMUTTER / COUPLING NUT |
| 10 | DICHRING FRONT / FRONT SEALING RING |
| 12 | ENDGEHÄUSE / ENDBELL |

Note: Due to an automatic nomenclature system, numbers generated may not be sequential.
 Notiz: Durch ein automatisches Benennungssystem können Nummerierungen entstehen, die nicht fortlaufend sind.

| Material Specification: | |
|-------------------------|--|
| Shell Material: | Aluminium alloy |
| Shell Plating: | Olive drab chromate over cadmium plating |
| Insulator Material: | CR-Elastomere |
| Contact Material: | Copper alloy |
| Contact Plating: | Gold 0,5 µm |

| all dimensions are in mm | | drawing for | |
|--|---|--|---|
| Dimensions without tolerance indications are general tolerances in acc. with DIN7188m | | CUSTOMER | |
|  ITT <i>Engineered for life</i> <small>ITT CANONION GmbH 67136 Wiesbaden/Germany</small> | description CA3106E14S-4S-B-A176 | | |
| | Plug, straight | | |
| | Endbell with clamp and bushing Solder Cup / Socket / Layout: 14S-4 | | |
| <small>© All rights reserved. Reproduction or issue to third in any form whatever is only permitted with written authorization of ITT Canon</small> | |  page 1/1 | <small>revision</small> 392.12, Apr 11 |