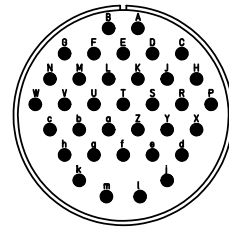
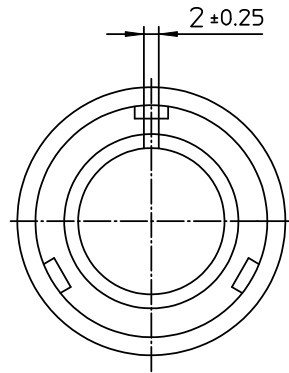



| NO. | MASSE / DIMENSION |
|-----|-------------------|
| A   | 53.4              |
| B1  | 21.5              |
| B2  | 16.6              |
| C   | 76                |



| NO. | BESCHREIBUNG / DESCRIPTION              |
|-----|---|
| 2   | ISOLIERKÖRPER BUCHSE / INSULATOR SOCKET |
| 3   | DICHTKÖRPER / GROMMET                   |
| 4   | ENDRING / ENDRING                       |
| 6   | KONTAKTBUCHSE / CONTACT SOCKET          |
| 7   | ZYLINDERGHÄUSE / BARREL                 |
| 9   | ÜBERWURFMUTTER / COUPLING NUT           |
| 10  | DICHRING FRONT / FRONT SEALING RING     |
| 12  | ENDGEHÄUSE / ENDBELL                    |

Note: Due to an automatic nomenclature system, numbers generated may not be sequential.  
 Notiz: Durch ein automatisches Benennungssystem können Nummerierungen entstehen, die nicht fortlaufend sind.

| Material Specification:                                 |
|---|
| Shell Material: Aluminium alloy                         |
| Shell Plating: Olive drab chromate over cadmium plating |
| Insulator Material: CR-Elastomere                       |
| Contact Material: Copper alloy                          |
| Contact Plating: Hard silver                            |

| all dimensions are in mm  |  | drawing for                         |
|---|--|-------------------------------------|
| Dimensions without tolerance indications are general tolerances in acc. with DIN7188m   |  | CUSTOMER                            |
| <br><b>ITT</b><br><i>Engineered for life</i><br><small>ITT CANADON GmbH<br/>           D-73584 Nürting/Germany</small> | description CA3106E28-15SXB-F80                                      |                                     |
|   | Plug, straight   |                                     |
|   | Endbell with clamp and bushing<br>AWG Crimp / Socket / Layout: 28-15 |                                     |
| <small>© All rights reserved. Reproduction or issue to third in any form<br/>           whatever is only permitted with written authorization of ITT Cannon</small>   |  | page 1/1<br>revision 392.12, Apr 11 |