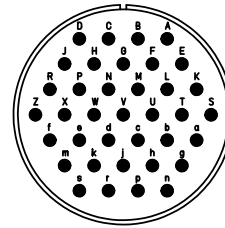
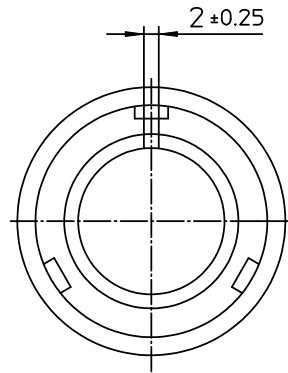


NO.	MASSE / DIMENSION
A	53.4
B1	21.5
B2	16.6
C	76




NO.	BESCHREIBUNG / DESCRIPTION
2	ISOLIERKÖRPER BUCHSE / INSULATOR SOCKET
3	DICHTKÖRPER / GROMMET
4	ENDRING / ENDRING
6	KONTAKTBUCHSE / CONTACT SOCKET
7	ZYLINDERGHÄUSE / BARREL
9	ÜBERWURFMUTTER / COUPLING NUT
10	DICHRING FRONT / FRONT SEALING RING
12	ENDGEHÄUSE / ENDBELL

Note: Due to an automatic nomenclature system, numbers generated may not be sequential.

Notiz: Durch ein automatisches Benennungssystem können Nummerierungen entstehen, die nicht fortlaufend sind.

Material Specification:	
Shell Material:	Aluminium alloy
Shell Plating:	Olive drab chromate over cadmium plating
Insulator Material:	CR-Elastomere
Contact Material:	Copper alloy
Contact Plating:	Hard silver

all dimensions are in mm		drawing for	
Dimensions without tolerance indications are general tolerances in acc. with DIN7188m		CUSTOMER	
 <b>ITT</b> <i>Engineered for life</i> <small>ITT CANONON GmbH            D-73844 Nürting/Germany</small>	description CA3106E28-21SWB-F80		
	Plug, straight		
	Endbell with clamp and bushing AWG Crimp / Socket / Layout: 28-21		
© All rights reserved. Reproduction or issue to third in any form whenever is only permitted with written authorization of ITT Canon		page 1/1	revision 392.12, Apr 11