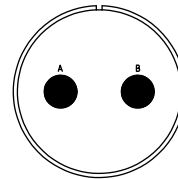
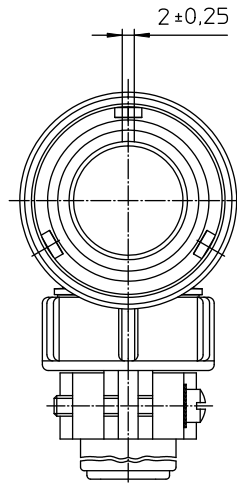


NO.	MASSE / DIMENSION
A	46.6
B1	21.5
B2	16.6
C	43.3
D	58
E	66



NO.	BESCHREIBUNG / DESCRIPTION
2	ISOLIERKÖRPER BUCHSE / INSULATOR SOCKET
3	DICHTKÖRPER / GROMMET
4	ENDRING / ENDRING
6	KONTAKTBUCHSE / CONTACT SOCKET
7	ZYLINDERGHÄUSE / BARREL
9	ÜBERWURFMUTTER / COUPLING NUT
10	DICHTRING FRONT / FRONT SEALING RING
12	ENDGEHÄUSE / ENDBELL

Note: Due to an automatic nomenclature system, numbers generated may not be sequential.
 Note: Durch ein automatisches Benennungssystem können Nummerierungen entstehen, die nicht fortlaufend sind.

Material Specification:
Shell Material: Aluminium alloy
Shell Plating: Olive drab chromate over cadmium plating
Insulator Material: CR-Elastomere
Contact Material: Copper alloy
Contact Plating: Hard silver

all dimensions are in mm
 Dimensions without tolerance indications are general tolerances in acc. with DIN 7168m

drawing for
 CUSTOMER

ITT
 description CA3108E24-9S-B-F80
 Plug, 90°
 Endbell with clamp and bushing
 AWG Crimp / Socket / Layout: 24-9

© All rights reserved. Reproduction or use in any form without the prior written authorization of ITT Corp.
 ITT Corporation
 11100 North Central Expressway
 Chicago, IL 60642-1000
 Page 1/1 revision 392.12, Apr 11