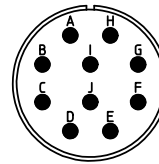
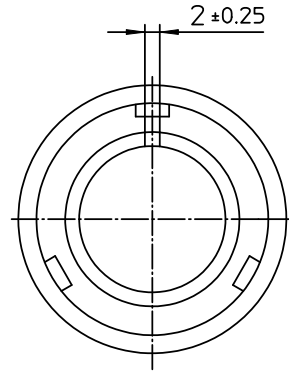



NO.	MASSE / DIMENSIO
A	36.5
B1	14.3
B2	-
C	68



NO.	BESCHREIBUNG / DESCRIPTION
2	ISOLIERKÖRPER BUCHSE / INSULATOR SOCKET
3	DICHTKÖRPER / GROMMET
4	ENDRING / ENDRING
6	KONTAKTBUCHSE / CONTACT SOCKET
7	ZYLINDERGHÄUSE / BARREL
9	ÜBERWURFMUTTER / COUPLING NUT
10	DICHTRING FRONT / FRONT SEALING RING
12	ENDGEHÄUSE / ENDBELL

Note: Due to an automatic nomenclature system, numbers generated may not be sequential.
 Notiz: Durch ein automatisches Benennungssystem können Nummerierungen entstehen, die nicht fortlaufend sind.

Material Specification:
Shell Material: Aluminium alloy
Shell Plating: Zinc cobalt, black
Insulator Material: CR-Elastomere
Contact Material: Copper alloy
Contact Plating: Gold 0,5 µm

all dimensions are in mm	drawing for				
Dimensions without tolerance indications are general tolerances in acc. with DIN7188m	CUSTOMER				
 ITT <i>Engineered for life</i> <small>ITT CANON GMBH D-73844 Nürting/Germany</small>	description CA3106E18-1S-B-F80-A176-A232				
	Plug, straight				
	Endbell with clamp and bushing AWG Crimp / Socket / Layout: 18-1				
© All rights reserved. Reproduction or issue to third in any form whenever is only permitted with written authorization of ITT Cannon	<table border="1"> <tr> <td>page</td> <td>revision</td> </tr> <tr> <td>1/1</td> <td>392.12, Apr 11</td> </tr> </table>	page	revision	1/1	392.12, Apr 11
page	revision				
1/1	392.12, Apr 11				