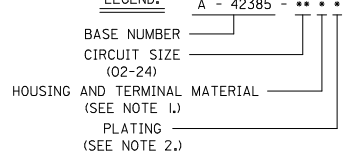


NOTES:

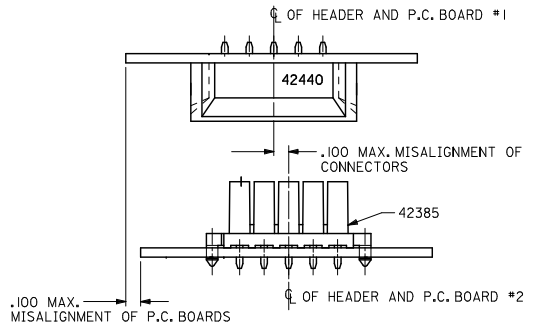
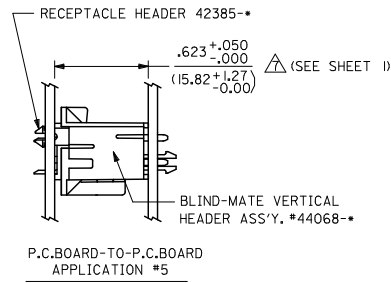
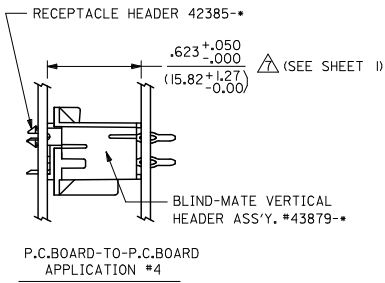
- 1) HOUSING AND TERMINAL MATERIAL:
 - A - HOUSING: NYLON 6/6, U.L. 94V-2, COLOR: NATURAL. TERMINAL: BRASS, ALLOY 260.
 - B - HOUSING: NYLON 6/6, U.L. 94V-0, COLOR: NATURAL. TERMINAL: BRASS, ALLOY 260.
 - C - HOUSING: NYLON 6/6, U.L. 94V-2, COLOR: NATURAL. TERMINAL: PHOS. BRONZE, ALLOY 510.
 - D - HOUSING: NYLON 6/6, U.L. 94V-0, COLOR: NATURAL. TERMINAL: PHOS. BRONZE, ALLOY 510.
- 2) TERMINAL PLATING:
 - 1 - .000100/(.00254) MIN. BRIGHT TIN OVER .000050/(.00127) MIN. NICKEL.
 - 2 - .00030/(.00076) MIN. SELECT GOLD AND .000100/(.00254) MIN. SELECT MATTE TIN OVER .000050/(.00127) MIN. NICKEL OVERALL.
 - 3 - .000100/(.00254) MIN. TIN OVER .000050/(.00127) MIN. NICKEL.
 - 4 - .000050/(.00127) MIN. SELECT GOLD AND .000100/(.00254) MIN. SELECT MATTE TIN OVER .000050/(.00127) MIN. NICKEL OVERALL.
- 3) PRODUCT SPECIFICATION AND PROCESSING PARAMETERS: PS-5556-002.
- 4) TRAY PACK PER PK-42385-999.
- 5) PART MATES WITH MINI-FIT B.M.I. PLUG #42475 AND HEADERS 42404,42440,43879, AND 44068.
- 6) PHANTOM LINES INDICATE AREAS WHERE TERMINAL STANDOFFS CONTACT P.C. BOARD.
- 7) A MAXIMUM TOLERANCE OF .050/(1.27) ALLOWS FOR 2 POINTS OF ELECTRICAL CONTACT. A MAXIMUM TOLERANCE OF .020/(.51) ALLOWS FOR 4 POINTS OF CONTACT.
- 8) .016 IN/IN OR .016 MM/MM MAX. BOW ALLOWABLE AT DATUM **C-C**.
- 9) PART ALLOWS FOR UP TO .100/(2.54) MISALIGNMENT WITH MATING CONNECTOR.
- 10) DIMENSION TO BE USED FOR ALIGNMENT OF CIRCUIT #1 OF MATING CONNECTOR
- 11) CONNECTOR ASSEMBLIES ARE NOT TO BE MATED OR UNMATED WHILE CIRCUITS ARE LIVE.
- 12) PARTS NOT DESIGNED FOR CURRENT SHARING.
- 13) WHEN THIS PRODUCT IS USED IN A BLIND MATING APPLICATION, THE SYSTEM LEVEL DESIGN MUST INCORPORATE GUIDANCE SO THE CONNECTORS ARE WITHIN THE CAPTURE ENVELOPE OF THE FLANGES ON THE HEADER OR PLUG HOUSING AND CAN THUS ALIGN THEMSELVES AS THEY COME TOGETHER. FLOAT IS ALSO REQUIRED IN THE OVERALL DESIGN TO ALLOW THE PCB RECEPTACLE OR ITS MATE TO MOVE INTO A STRESS-FREE POSITION AFTER MATING.
- 14) PARTS CONFORM TO CLASS 'B' REQUIREMENTS OF COSMETIC SPECIFICATION PS-45499-002.

LEGEND:

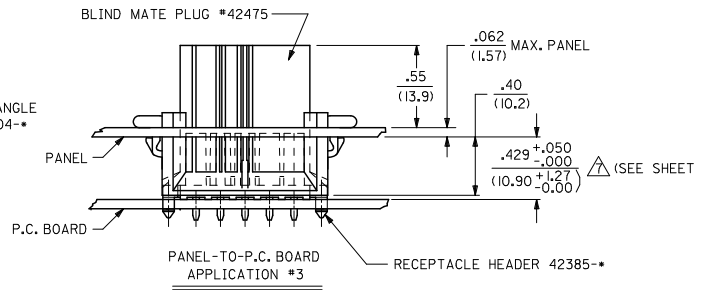
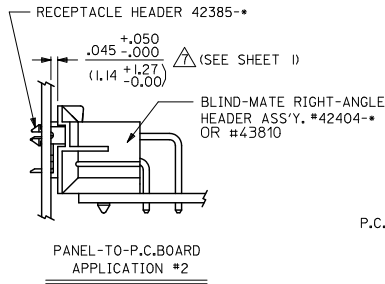
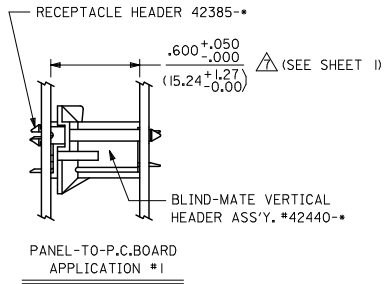


ADD PART NUMBER EC NO: UCP2011-1462 DRAWN: JAGUILAR 2010/11/18 CHKD: BELL 2010/11/18 APPR: SMITH 2010/11/22	QUALITY SYMBOLS ∇=0 ∇=0 ∇=0	GENERAL TOLERANCES (UNLESS SPECIFIED)		DIMENSION STYLE IN/MM		SCALE 4:1	DESIGN UNITS METRIC	THIRD ANGLE PROJECTION
		4 PLACES ± .005 ± .005 3 PLACES ± .005 ± .010 2 PLACES ± .025 ± .015 1 PLACE ± 0.38 ± .005 ANGULAR ± 5°	mm INCH DRAWN BY: R/JF DATE: 1988/12/09 CHECKED BY: JTR DATE: 1988/12/09 APPROVED BY: F/SMITH DATE: 2010/11/22	TITLE RECEPTACLE HEADER ASSY MINI-FIT SERIES BLIND MATE		MATERIAL NO. SDA-42385-*		DOCUMENT NO.
DRAFT WHERE APPLICABLE MUST REMAIN WITHIN DIMENSIONS		SIZE SEE SHT 3-4		THIS DRAWING CONTAINS INFORMATION THAT IS PROPRIETARY TO MOLEX INCORPORATED AND SHOULD NOT BE USED WITHOUT WRITTEN PERMISSION				

13 12 11 10 9 8 7 6 5 4 3 2 1



ALIGNMENT TOLERANCES FOR .100 MAX. BOARD-TO-BOARD MISALIGNMENT
(NO CONNECTOR FLOAT)



SEE NOTE 13

SEE SHEET 1 EC NO: UCP2011-1462 DRAWN: JAGUILAR 2010/11/18 CHKD: BELL 2010/11/18 APPR: SMITH 2010/11/22 W5	QUALITY SYMBOLS	GENERAL TOLERANCES (UNLESS SPECIFIED)	DIMENSION STYLE IN/MM	SCALE 4:1	DESIGN UNITS METRIC	THIRD ANGLE PROJECTION
	▽=0	4 PLACES ± .015 ± .015	DRAWN BY RJF DATE 1988/12/09	TITLE RECEPTACLE HEADER ASSY		
	▽=0	3 PLACES ± .025 ± .015	CHECKED BY JTR DATE 1988/12/09	MINI-FIT SERIES		
	▽=0	2 PLACES ± 0.25 ± .015	APPROVED BY FSMITH DATE 2010/11/22	BLIND MATE		
		1 PLACE ± 0.38 ± .015				
		ANGULAR ± 5 °				
		DRAFT WHERE APPLICABLE MUST REMAIN WITHIN DIMENSIONS	MATERIAL NO. SEE CHART	DOCUMENT NO. SDA-42385-*		SHEET NO. 2 OF 4
			THIS DRAWING CONTAINS INFORMATION THAT IS PROPRIETARY TO MOLEX INCORPORATED AND SHOULD NOT BE USED WITHOUT WRITTEN PERMISSION			

13	12	11	10	9	8	7	6	5	4	3	2	1
NO E.D.P.	NO E.D.P.	NO E.D.P.	NO E.D.P.	NO E.D.P.	NO E.D.P.	NO E.D.P.	NO E.D.P.	NO E.D.P.	NO E.D.P.	NO E.D.P.	NO E.D.P.	NO E.D.P.
5-24-7041	5-24-7061	5-24-7101	5-24-7141	5-24-7161	5-24-7181	5-24-7241	5-24-7043	5-24-7063	5-24-7103	5-24-7143	5-24-7163	5-24-7243
4	6	8	10	12	14	16	4	6	8	10	12	14
94V-0/BRASS	94V-0/BRASS	94V-0/BRASS	94V-0/BRASS	94V-0/BRASS	94V-0/BRASS	94V-0/BRASS	94V-2/BRASS	94V-2/BRASS	94V-2/BRASS	94V-2/BRASS	94V-2/BRASS	94V-2/BRASS
BRIGHT TIN OVER TICKEL	BRIGHT TIN OVER TICKEL	BRIGHT TIN OVER TICKEL	BRIGHT TIN OVER TICKEL	BRIGHT TIN OVER TICKEL	BRIGHT TIN OVER TICKEL	BRIGHT TIN OVER TICKEL	30 M.I. SEL. GOLD	30 M.I. SEL. GOLD	30 M.I. SEL. GOLD	30 M.I. SEL. GOLD	30 M.I. SEL. GOLD	30 M.I. SEL. GOLD
NO E.D.P.	NO E.D.P.	NO E.D.P.	NO E.D.P.	NO E.D.P.	NO E.D.P.	NO E.D.P.	NO E.D.P.	NO E.D.P.	NO E.D.P.	NO E.D.P.	NO E.D.P.	NO E.D.P.
5-24-7041	5-24-7061	5-24-7101	5-24-7141	5-24-7161	5-24-7181	5-24-7241	5-24-7043	5-24-7063	5-24-7103	5-24-7143	5-24-7163	5-24-7243
4	6	8	10	12	14	16	4	6	8	10	12	14
94V-0/BRASS	94V-0/BRASS	94V-0/BRASS	94V-0/BRASS	94V-0/BRASS	94V-0/BRASS	94V-0/BRASS	94V-2/BRASS	94V-2/BRASS	94V-2/BRASS	94V-2/BRASS	94V-2/BRASS	94V-2/BRASS
BRIGHT TIN OVER TICKEL	BRIGHT TIN OVER TICKEL	BRIGHT TIN OVER TICKEL	BRIGHT TIN OVER TICKEL	BRIGHT TIN OVER TICKEL	BRIGHT TIN OVER TICKEL	BRIGHT TIN OVER TICKEL	30 M.I. SEL. GOLD	30 M.I. SEL. GOLD	30 M.I. SEL. GOLD	30 M.I. SEL. GOLD	30 M.I. SEL. GOLD	30 M.I. SEL. GOLD
NO E.D.P.	NO E.D.P.	NO E.D.P.	NO E.D.P.	NO E.D.P.	NO E.D.P.	NO E.D.P.	NO E.D.P.	NO E.D.P.	NO E.D.P.	NO E.D.P.	NO E.D.P.	NO E.D.P.
5-24-7041	5-24-7061	5-24-7101	5-24-7141	5-24-7161	5-24-7181	5-24-7241	5-24-7043	5-24-7063	5-24-7103	5-24-7143	5-24-7163	5-24-7243
4	6	8	10	12	14	16	4	6	8	10	12	14
94V-0/BRASS	94V-0/BRASS	94V-0/BRASS	94V-0/BRASS	94V-0/BRASS	94V-0/BRASS	94V-0/BRASS	94V-2/BRASS	94V-2/BRASS	94V-2/BRASS	94V-2/BRASS	94V-2/BRASS	94V-2/BRASS
BRIGHT TIN OVER TICKEL	BRIGHT TIN OVER TICKEL	BRIGHT TIN OVER TICKEL	BRIGHT TIN OVER TICKEL	BRIGHT TIN OVER TICKEL	BRIGHT TIN OVER TICKEL	BRIGHT TIN OVER TICKEL	30 M.I. SEL. GOLD	30 M.I. SEL. GOLD	30 M.I. SEL. GOLD	30 M.I. SEL. GOLD	30 M.I. SEL. GOLD	30 M.I. SEL. GOLD
NO E.D.P.	NO E.D.P.	NO E.D.P.	NO E.D.P.	NO E.D.P.	NO E.D.P.	NO E.D.P.	NO E.D.P.	NO E.D.P.	NO E.D.P.	NO E.D.P.	NO E.D.P.	NO E.D.P.
5-24-7041	5-24-7061	5-24-7101	5-24-7141	5-24-7161	5-24-7181	5-24-7241	5-24-7043	5-24-7063	5-24-7103	5-24-7143	5-24-7163	5-24-7243
4	6	8	10	12	14	16	4	6	8	10	12	14
94V-0/BRASS	94V-0/BRASS	94V-0/BRASS	94V-0/BRASS	94V-0/BRASS	94V-0/BRASS	94V-0/BRASS	94V-2/BRASS	94V-2/BRASS	94V-2/BRASS	94V-2/BRASS	94V-2/BRASS	94V-2/BRASS
BRIGHT TIN OVER TICKEL	BRIGHT TIN OVER TICKEL	BRIGHT TIN OVER TICKEL	BRIGHT TIN OVER TICKEL	BRIGHT TIN OVER TICKEL	BRIGHT TIN OVER TICKEL	BRIGHT TIN OVER TICKEL	30 M.I. SEL. GOLD	30 M.I. SEL. GOLD	30 M.I. SEL. GOLD	30 M.I. SEL. GOLD	30 M.I. SEL. GOLD	30 M.I. SEL. GOLD

SEE SHEET 1
 EC NO: UCP2011-1462 2010/11/28
 DRWN: JAGUILAR 2010/11/28
 CHKD: JEBEL 2010/11/28
 APPR: SMITH 2010/11/22

QUALITY SYMBOLS

GENERAL TOLERANCES (UNLESS SPECIFIED):
 4 PLACES ± 0.15 mm ± 0.010 INCH
 3 PLACES ± 0.25 mm ± 0.015 INCH
 2 PLACES ± 0.38 mm ± 0.015 INCH
 1 PLACE ± 0.50 mm ± 0.020 INCH
 ANGULAR ± 5°

DRAFT WHERE APPLICABLE MUST REMAIN WITHIN DIMENSIONS

SEE CHART

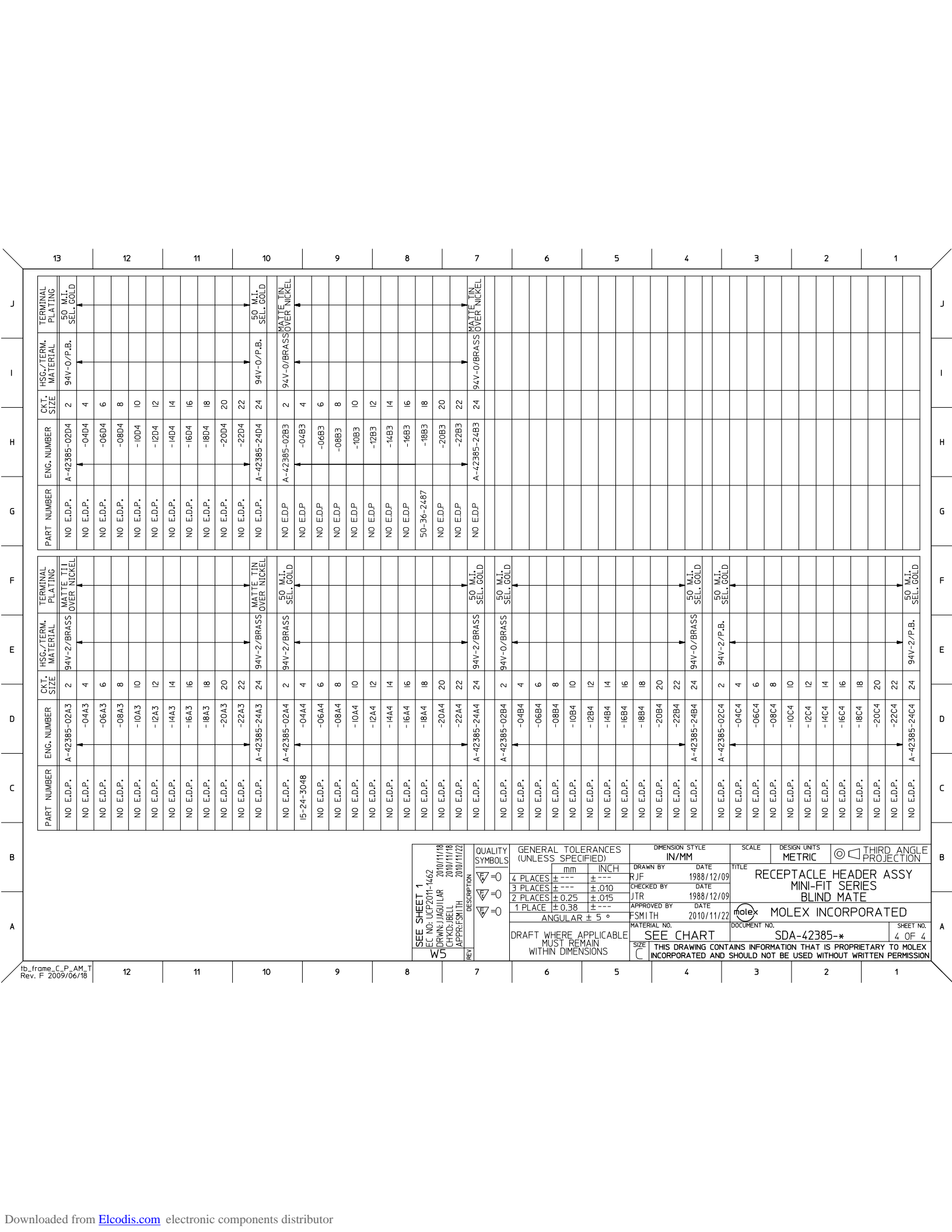
THIS DRAWING CONTAINS INFORMATION THAT IS PROPRIETARY TO MOLEX INCORPORATED AND SHOULD NOT BE USED WITHOUT WRITTEN PERMISSION

RECEPTACLE HEADER ASSY
 MINI-FIT SERIES
 BLIND MATE

MOLEX INCORPORATED

SDA-42385-*

3 OF 4



SEE SHEET 1
 EC NO. UEP2011-1462
 DRAWN: JAG/JLAR 2010/11/18
 CHKD: JBEL 2010/11/18
 APPR: FSM/TH 2010/11/22

REV	DESCRIPTION
1	

QUALITY SYMBOLS

GENERAL TOLERANCES (UNLESS SPECIFIED)

	mm	INCH
4 PLACES	± .10	± .004
3 PLACES	± .15	± .005
2 PLACES	± .25	± .010
1 PLACE	± .38	± .015
ANGULAR	± 5°	

DRAFT WHERE APPLICABLE
 MUST REMAIN WITHIN DIMENSIONS

DIMENSION STYLE IN/MM

DRAWN BY	DATE
RJF	1988/12/09
CHECKED BY	DATE
JTR	1988/12/09
APPROVED BY	DATE
FSM/TH	2010/11/22

MATERIAL NO. SEE CHART
 DOCUMENT NO. SDA-42385-*

SCALE DESIGN UNITS METRIC

THIRD ANGLE PROJECTION

TITLE RECEPTACLE HEADER ASSY
 MINI-FIT SERIES
 BLIND MATE

MOLEX INCORPORATED

SHEET NO. 4 OF 4

THIS DRAWING CONTAINS INFORMATION THAT IS PROPRIETARY TO MOLEX INCORPORATED AND SHOULD NOT BE USED WITHOUT WRITTEN PERMISSION

tb_frame_C.P. AM.T
 Rev. F 2009/06/18