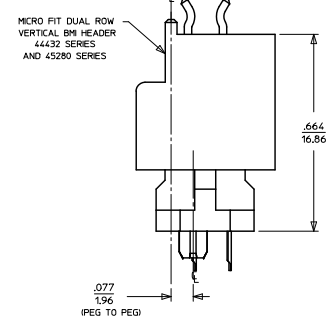
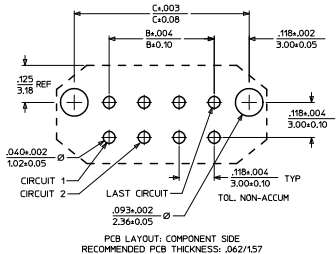
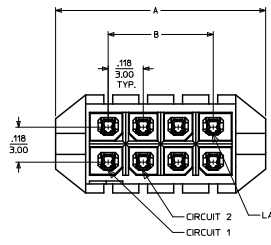
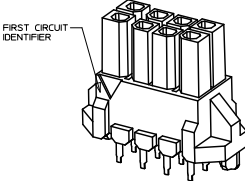
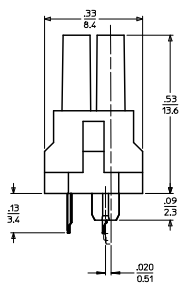
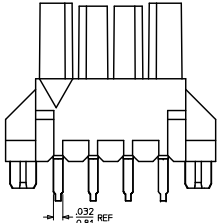


13 12 11 10 9 8 7 6 5 4 3 2 1

CIRCUIT SIZE	DIM. "A"	DIM. "B"	DIM. "C"	MATERIAL NUMBER	NUMBER OF POSITIONS	PLATING OPTION
4	.472/(12.00)	.118/(3.00)	.354/(9.00)	44769-0401	04	A
6	.591/(15.00)	.236/(6.00)	.472/(12.00)	44769-0402	04	B
8	.709/(18.00)	.354/(9.00)	.591/(15.00)	44769-0403	04	C
10	.827/(21.00)	.472/(12.00)	.709/(18.00)	44769-0601	06	A
12	.945/(24.00)	.591/(15.00)	.827/(21.00)	44769-0602	06	B
14	1.063/(27.00)	.709/(18.00)	.945/(24.00)	44769-0603	06	C
16	1.181/(30.00)	.827/(21.00)	1.063/(27.00)	44769-0801	08	A
18	1.299/(33.00)	.945/(24.00)	1.181/(30.00)	44769-0802	08	B
20	1.417/(36.00)	1.063/(27.00)	1.299/(33.00)	44769-0803	08	C
22	1.535/(39.00)	1.181/(30.00)	1.417/(36.00)	44769-1001	10	A
24	1.654/(42.00)	1.299/(33.00)	1.535/(39.00)	44769-1002	10	B
				44769-1003	10	C
				44769-1201	12	A
				44769-1202	12	B
				44769-1203	12	C
				44769-1401	14	A
				44769-1402	14	B
				44769-1403	14	C
				44769-1601	16	A
				44769-1602	16	B
				44769-1603	16	C
				44769-1801	18	A
				44769-1802	18	B
				44769-1803	18	C
				44769-2001	20	A
				44769-2002	20	B
				44769-2003	20	C
				44769-2201	22	A
				44769-2202	22	B
				44769-2203	22	C
				44769-2401	24	A
				44769-2402	24	B
				44769-2403	24	C



MATED DIMENSIONS
(FOR ALIGNMENT OF PCB'S IN X & Y DIRECTIONS)



- NOTES:
- MATERIAL:
HOUSING: HIGH TEMP. NYLON, GLASS FILLED, UL 94V-0, COLOR - BLACK
TERMINALS: PHOSPHOR BRONZE ALLOY
 - FINISH:
(A) - .000100/0.00254 MIN. TIN OVER
.000050/0.00127 MIN. NICKEL
(B) - .000015/0.00039 MIN. SELECTIVE GOLD IN CONTACT AREA,
.000100/0.00254 MIN. SELECTIVE TIN IN PC TAIL AREA,
BOTH OVER .000050/0.00127 MIN. NICKEL
(C) - .000030/0.00076 MIN. SELECTIVE GOLD IN CONTACT AREA,
.000100/0.00254 MIN. SELECTIVE TIN IN PC TAIL AREA,
BOTH OVER .000050/0.00127 MIN. NICKEL
 - PRODUCT SPECIFICATIONS: PS-44300-001
 - PACKAGING SPECIFICATIONS: PS-44769-001
 - MATES WITH MOLEX MICRO-FIT BMI HEADER SERIES 45280, 44432, 44428, AND 44300.
 - MOLEX RECOMMENDS THE USE OF MICRO-FIT TEST PLUG (SERIES 44242) WHENEVER CONTINUITY TESTING IS PERFORMED. TEST PLUGS MUST NOT BE USED TO MAKE OR BREAK UNDER LOAD. MOLEX DOES NOT RECOMMEND USING STANDARD MATING COMPONENTS (SERIES 45280, 44432, 44428, OR 44300) FOR TESTING PURPOSES.
 - THIS PART CONFORMS TO CLASS 'B' SPECIFICATIONS OF COSMETIC SPECIFICATION PS-45499-002.

CORR. DESIGN UNITS EC NO. UCP2010-3273 DRAWN BY: JPPER 2008/02/04 CHKD BY: SSUSEK 2010/06/17 APPROVED BY: SMITH 2010/06/25	QUALITY SYMBOLS ▽=0 ▽=0	GENERAL TOLERANCES (UNLESS SPECIFIED)		DIMENSION STYLE IN/MM		SCALE ---	DESIGN UNITS METRIC	THIRD ANGLE PROJECTION	
		4 PLACES ±---	±---	DRAWN BY: BURLESON	DATE: 2000/07/13	TITLE: MICRO-FIT (3.0) BMI VERT. RECEPTACLE ASS'Y 4 - 24 CIRCUIT			
E2	REN	3 PLACES ±---	±.010	CHECKED BY: MUELLER	DATE: 2000/07/13	MATERIAL NO. SD-44769-001 DOCUMENT NO. 1 OF 1			
		2 PLACES ±.25	±.014	APPROVED BY: EDGLEY	DATE: 2000/07/13				
		1 PLACE ±0.35	±---	ANGULAR ±1/2°		THIS DRAWING CONTAINS INFORMATION THAT IS PROPRIETARY TO MOLEX INCORPORATED AND SHOULD NOT BE USED WITHOUT WRITTEN PERMISSION			

1b_frame_C.P.M.E.T Rev. E 2006/04/15 12 11 10 9 8 7 6 5 4 3 2 1