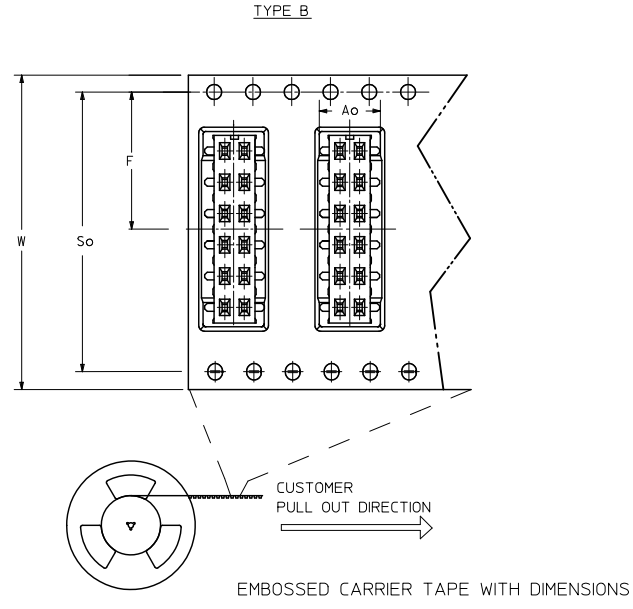
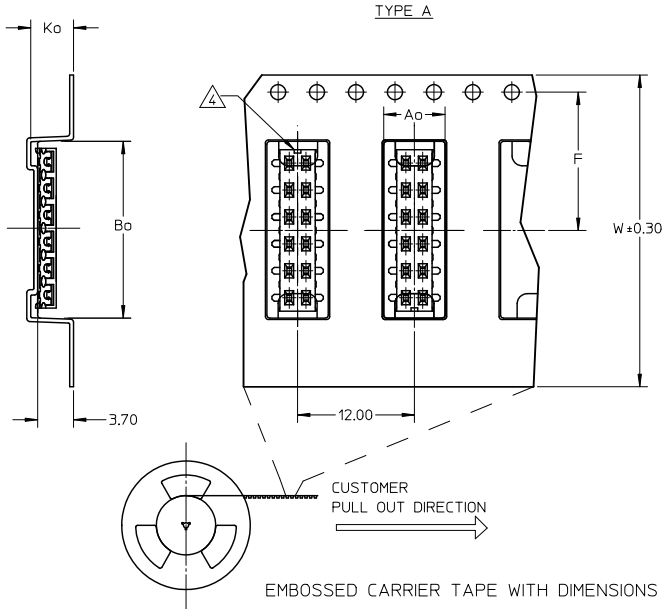


PART NO. IN TUBE	CKT. SIZE	DIM. B	DIM. A
87340-04**	4	2.00	4.00
87340-06**	6	4.00	6.00
87340-08**	8	6.00	8.00
87340-10**	10	8.00	10.00
87340-12**	12	10.00	12.00
87340-14**	14	12.00	14.00
87340-16**	16	14.00	16.00
87340-18**	18	16.00	18.00
87340-20**	20	18.00	20.00

QUALITY SYMBOLS	GENERAL TOLERANCES (UNLESS SPECIFIED)		DIMENSION STYLE		SCALE	DESIGN UNITS	THIRD ANGLE PROJECTION
	mm	INCH	MM ONLY	DATE			
▽=0	4 PLACES ±	---	---	JKACHL I	1991/07/02	TITLE	MGRID
▽=0	3 PLACES ±	---	---	CHECKED BY	DATE		VLPR II, 2MM DUAL ROW
▽=0	2 PLACES ±	0.20	---	JNG	1991/07/09		TOP ENTRY RECEPT., SMT
▽=0	1 PLACE ±	---	---	APPROVED BY	DATE		MOLEX INCORPORATED
	ANGULAR ±		3°	MLONG	2009/11/24		
	DRAFT WHERE APPLICABLE		MUST REMAIN	MATERIAL NO.	SEE TABLE	DOCUMENT NO.	SD-87340-**-01
	WITHIN DIMENSIONS			SIZE	A3	SHEET NO.	1 OF 3

10 9 8 7 6 5 4 3 2 1

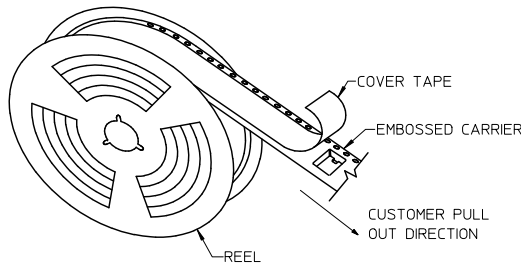


- NOTES:
- LEADER AND TRAILER TAPE
 - PEELING OFF FORCE OF THE TOP TAPE: 20-80gf.
 (PEELING DIRECTION AS SHOWN IN FOLLOWING FIGURE)
 - PACKAGING STANDARD IS AS PER EIA-481.
 - NO FIX ORIENTATION OF ASSEMBLY PART IN T&R.
 - TAPE & REEL QUANTITY : TBA

ADD T&R OPTION EIC NO: S2010-0879 DRWNSKANG 2010/04/27 CHYKATSEE 2010/04/26 APPR:MLONG 2010/04/27 L4	QUALITY SYMBOLS	GENERAL TOLERANCES (UNLESS SPECIFIED)	DIMENSION STYLE MM ONLY	SCALE NTS	DESIGN UNITS METRIC	THIRD ANGLE PROJECTION
	▽=0	4 PLACES ± --- ± ---	DRAWN BY JKACHL I	DATE 1991/07/02	TITLE MGRID	
	▽=0	3 PLACES ± --- ± ---	CHECKED BY JNG	DATE 1991/07/09	VLPR II, 2MM DUAL ROW TOP ENTRY RECEPT., SMT	
	▽=0	2 PLACES ± 0.20 ± ---	APPROVED BY MLONG	DATE 2009/11/24	MOLEX INCORPORATED	
		1 PLACE ± --- ± ---	MATERIAL NO. SEE TABLE	DOCUMENT NO. SD-87340-**01	SHEET NO. 2 OF 3	
		ANGULAR ± 3°	THIS DRAWING CONTAINS INFORMATION THAT IS PROPRIETARY TO MOLEX INCORPORATED AND SHOULD NOT BE USED WITHOUT WRITTEN PERMISSION			
		DRAFT WHERE APPLICABLE MUST REMAIN WITHIN DIMENSIONS				

tb_frame_A3_P_AM_T Rev. F 2009/06/18 9 8 7 6 5 4 3 2 1

10	9	8	7	6	5	4	3	2	1					
						PART NO. IN TUBE	PART NO. TAPE/REEL	CKT SIZE	Ao	Bo	F	W	Ko	So
						87340-1014	87340-1019	10	6.70	10.40	11.50	24.00	5.30	-
						87340-1613	87340-1618	16	6.60	16.30	11.50	24.00	4.40	-
						87340-1424	87340-1429	14	6.60	14.40	11.50	24.00	4.40	-
						87340-1813	87340-1818	18	6.60	18.40	14.20	32.00	4.40	28.40
						87340-1814	87340-1819	18	6.60	18.40	14.20	32.00	4.40	28.40
						87340-2024	87340-2029	20	6.60	20.30	20.20	44.00	5.40	40.40



TAPE AND REEL ASSEMBLY SHOWN IS FOR ILLUSTRATION ONLY.

ADD T&R OPTION EC NO: S2010-0879 DRWNSKANG 2010/04/22 CHYKATSEE 2010/04/26 APPR:MLONG 2010/04/27 L4 REV	QUALITY SYMBOLS	GENERAL TOLERANCES (UNLESS SPECIFIED)	DIMENSION STYLE	SCALE	DESIGN UNITS	THIRD ANGLE PROJECTION
	▽=0	mm INCH	MM ONLY	NTS	METRIC	
	▽=0	4 PLACES ± --- ± ---	DRAWN BY DATE			
	▽=0	3 PLACES ± --- ± ---	JKACHL I 1991/07/02			
	2 PLACES ± 0.20 ± ---	CHECKED BY DATE				TITLE
	1 PLACE ± --- ± ---	JNG 1991/07/09				MGRID
	ANGULAR ± 3°	APPROVED BY DATE				VLPR II, 2MM DUAL ROW
		MLONG 2009/11/24				TOP ENTRY RECEPT., SMT
	DRAFT WHERE APPLICABLE MUST REMAIN WITHIN DIMENSIONS	MATERIAL NO.				MOLEX INCORPORATED
		SEE TABLE				MOLEX INCORPORATED
						DOCUMENT NO.
						SD-87340-**-01
						SHEET NO.
						3 OF 3
						THIS DRAWING CONTAINS INFORMATION THAT IS PROPRIETARY TO MOLEX INCORPORATED AND SHOULD NOT BE USED WITHOUT WRITTEN PERMISSION