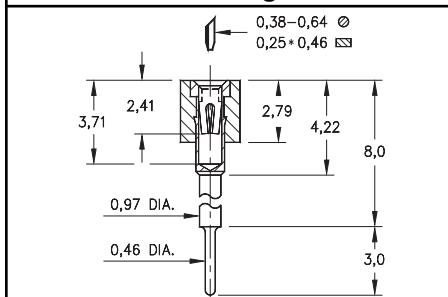
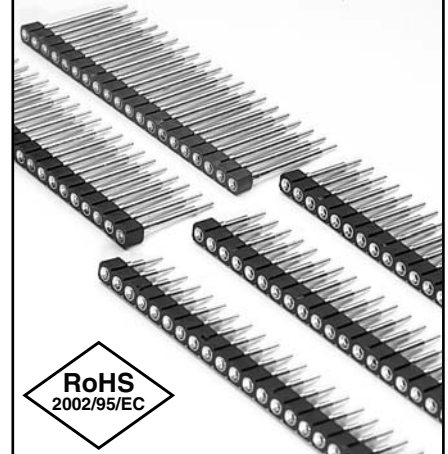
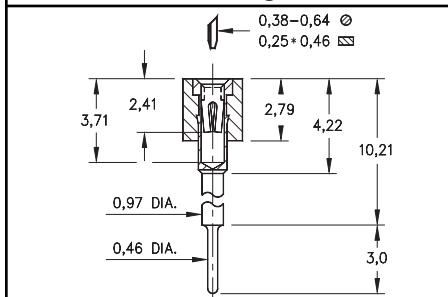


**Fig. 1**

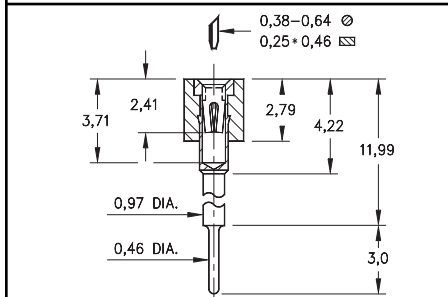
- Elevated socket strips are available in 5 different heights:  
 316...006 uses pin # 0153-1  
 316...003 uses pin # 0153-2  
 316...007 uses pin # 0153-3  
 316...008 uses pin # 0153-4  
 316...001 uses pin # 0153-5  
 See page 138 for details.
- Hi-Rel, 4-finger BeCu #30 contact is rated at 3 amps. See page 218 for details.
- Insulators are high temp. thermoplastic.



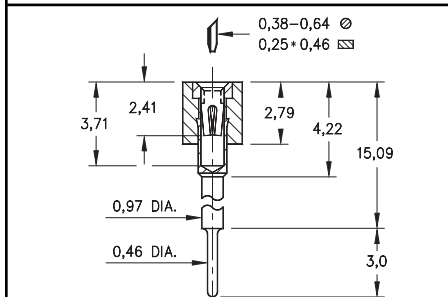
**Fig. 2**



**Fig. 3**



**Fig. 4**



**Fig. 5**

**Ordering Information**

<b>Fig. 1</b>	<b>Series 316...006</b>	<b>Standoff Height = 5,99</b>
	316-XX-1__-41-006000	Specify # of pins → 01-64
<b>Fig. 2</b>	<b>Series 316...003</b>	<b>Standoff Height = 8,0</b>
	316-XX-1__-41-003000	Specify # of pins → 01-64
<b>Fig. 3</b>	<b>Series 316...007</b>	<b>Standoff Height = 10,21</b>
	316-XX-1__-41-007000	Specify # of pins → 01-64
<b>Fig. 4</b>	<b>Series 316...008</b>	<b>Standoff Height = 11,99</b>
	316-XX-1__-41-008000	Specify # of pins → 01-64
<b>Fig. 5</b>	<b>Series 316...001</b>	<b>Standoff Height = 15,09</b>
	316-XX-1__-41-001000	Specify # of pins → 01-64

For Electrical, Mechanical & Environmental Data, See pg. 4

XX=Plating Code See Below

For RoHS compliance select  $\diamond$  plating code.

SPECIFY PLATING CODE XX=		93		43 $\diamond$
Sleeve (Pin)		5,08µm Sn/Pb		5,08µm Sn
Contact (Clip)		0,76µm Au		0,76µm Au