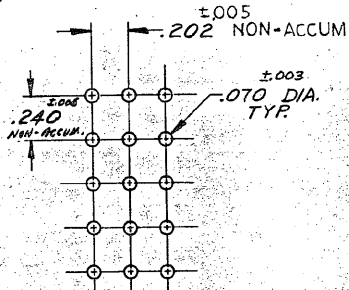
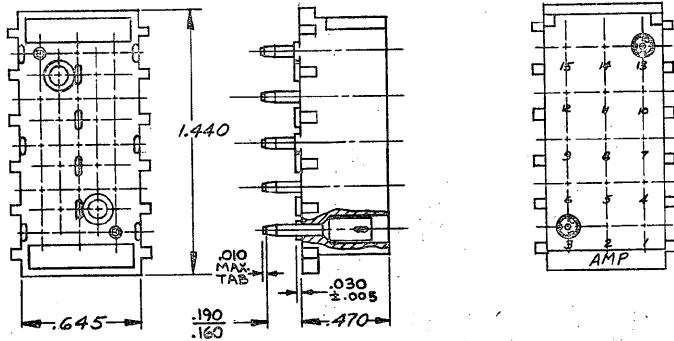


DRAWING MADE IN AMERICAN PROJECTION



RECOMMENDED LAYOUT FOR .062 THICK PC BOARD

- 1. MATES WITH HOUSING 480324
- 2. PARTS COMPLY WITH AMP SOLDERABILITY SPEC. NO. 109-11-3

Unpublished copy not to be reproduced nor published without written permission of AMP Inc. parts.

REQUIRED PER ASSEMBLY DR 9. Eblman 6-1-73 CHK E. Brennan 4-5-74 DE BM P. Brennan 4/5/74 APP E. Brennan 4/5/74	WIRE RANGE-INSULATION TOLERANCE EXCEPT AS NOTED SCALE 2 TO 01 LDC CM B NO 350644 NAME 15 CIRCUIT MATE-N-LOK PC BOARD SOCKET HEADER	MATERIAL AND FINISH SEE TABLE	PHOS BRZ - PRETIN PIN MATL & FINISH
		ASSEMBLY NO. 350644-1	HSG. MATL & COLOR NYLON - NATURAL
		© 1973 BY AMP INCORPORATED. ALL RIGHTS RESERVED. AMP PRODUCTS COVERED BY PATENTS AND/OR PATENTS PENDING. AMP INCORPORATED HARRISBURG, PENNA.	

PARTS LIST
 3
 E

AMP 1973 REV 11/74 6 5 4 3 2 1