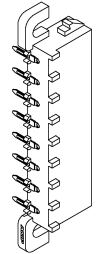
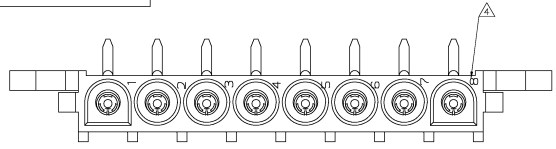


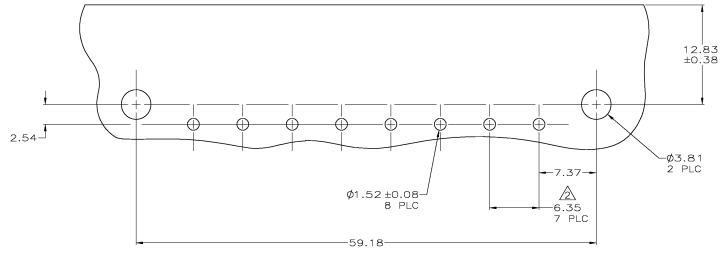
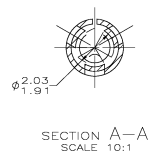
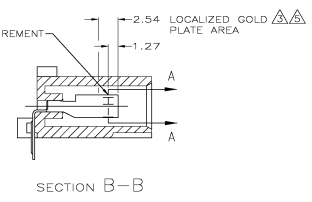
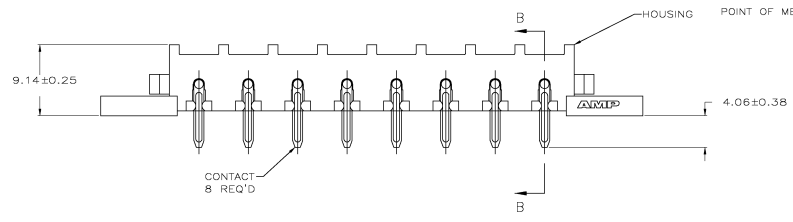
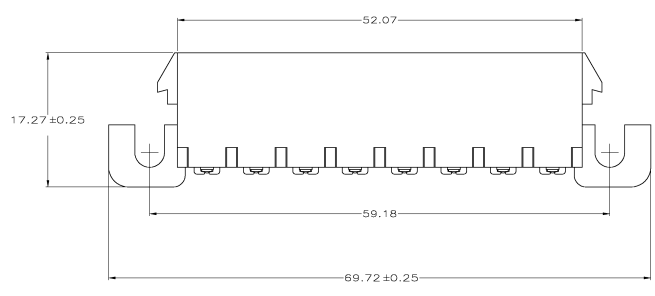
THIS DRAWING IS CONTROLLED BY THE DRAWING NUMBER. RELEASE FOR PURCHASE. ALL RIGHTS RESERVED.

REV	DATE	DESCRIPTION	BY	CHK	APP
00					
01		REVISED PER EC 0038-1084-04	214PMS	KW	SR



3-DIMENSIONAL MODEL NTS

- PARTS COMPLY WITH AMP SOLDERABILITY SPECIFICATION 109-11-5.
- TOLERANCE NON-CUMULATIVE.
- 0.00076 GOLD OVER 0.00127 MIN NICKEL WITH MATTE TIN LEAD ON SOLDER TAIL.
- CIRCUIT IDENTIFICATION CHARACTERS ARE ADJACENT TO THE INDICATED CAVITIES, BUT LOCATION AND ORIENTATION MAY DIFFER FROM PRINT.
- 0.00076 GOLD OVER 0.00127 MIN NICKEL WITH MATTE TIN ON SOLDER TAIL.



RECOMMENDED MOUNTING HOLE PATTERN FOR 1.57 THICK P.C. BOARD

MM	IN	MM	IN
2.03	.080	69.72	2.745
1.91	.075	59.18	2.330
1.57	.062	52.07	2.050
1.52	.060	17.27	.680
1.27	.050	12.83	.505
0.38	.015	9.14	.360
0.25	.010	7.37	.290
0.13	.005	6.35	.250
0.08	.003	4.06	.160
0.00127	.000050	3.81	.150
0.00076	.000030	2.54	.100

CONVERSION TABLE



CONTACT	HOUSING	PART NO
PH BRZ GOLD	NYLON, UL94V-0	3-643236-0
PH BRZ GOLD	NYLON, UL94V-0	643236-2
PH BRZ TIN	NYLON, UL94V-0	643236-1

THIS DRAWING IS A CONTROLLED DOCUMENT		REV	DATE	DESCRIPTION	BY	CHK	APP
DATE	ISSUED	0					
DATE	REVISED	1	01/01/00	REVISED PER EC 0038-1084-04	214PMS	KW	SR
DATE	REVISED	2					
DATE	REVISED	3					
DATE	REVISED	4					
DATE	REVISED	5					
DATE	REVISED	6					
DATE	REVISED	7					
DATE	REVISED	8					
DATE	REVISED	9					
DATE	REVISED	10					
DATE	REVISED	11					
DATE	REVISED	12					
DATE	REVISED	13					
DATE	REVISED	14					
DATE	REVISED	15					
DATE	REVISED	16					
DATE	REVISED	17					
DATE	REVISED	18					
DATE	REVISED	19					
DATE	REVISED	20					
DATE	REVISED	21					
DATE	REVISED	22					
DATE	REVISED	23					
DATE	REVISED	24					
DATE	REVISED	25					
DATE	REVISED	26					
DATE	REVISED	27					
DATE	REVISED	28					
DATE	REVISED	29					
DATE	REVISED	30					
DATE	REVISED	31					
DATE	REVISED	32					
DATE	REVISED	33					
DATE	REVISED	34					
DATE	REVISED	35					
DATE	REVISED	36					
DATE	REVISED	37					
DATE	REVISED	38					
DATE	REVISED	39					
DATE	REVISED	40					
DATE	REVISED	41					
DATE	REVISED	42					
DATE	REVISED	43					
DATE	REVISED	44					
DATE	REVISED	45					
DATE	REVISED	46					
DATE	REVISED	47					
DATE	REVISED	48					
DATE	REVISED	49					
DATE	REVISED	50					
DATE	REVISED	51					
DATE	REVISED	52					
DATE	REVISED	53					
DATE	REVISED	54					
DATE	REVISED	55					
DATE	REVISED	56					
DATE	REVISED	57					
DATE	REVISED	58					
DATE	REVISED	59					
DATE	REVISED	60					
DATE	REVISED	61					
DATE	REVISED	62					
DATE	REVISED	63					
DATE	REVISED	64					
DATE	REVISED	65					
DATE	REVISED	66					
DATE	REVISED	67					
DATE	REVISED	68					
DATE	REVISED	69					
DATE	REVISED	70					
DATE	REVISED	71					
DATE	REVISED	72					
DATE	REVISED	73					
DATE	REVISED	74					
DATE	REVISED	75					
DATE	REVISED	76					
DATE	REVISED	77					
DATE	REVISED	78					
DATE	REVISED	79					
DATE	REVISED	80					
DATE	REVISED	81					
DATE	REVISED	82					
DATE	REVISED	83					
DATE	REVISED	84					
DATE	REVISED	85					
DATE	REVISED	86					
DATE	REVISED	87					
DATE	REVISED	88					
DATE	REVISED	89					
DATE	REVISED	90					
DATE	REVISED	91					
DATE	REVISED	92					
DATE	REVISED	93					
DATE	REVISED	94					
DATE	REVISED	95					
DATE	REVISED	96					
DATE	REVISED	97					
DATE	REVISED	98					
DATE	REVISED	99					
DATE	REVISED	100					