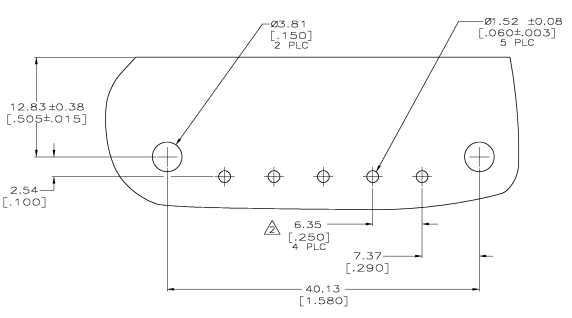
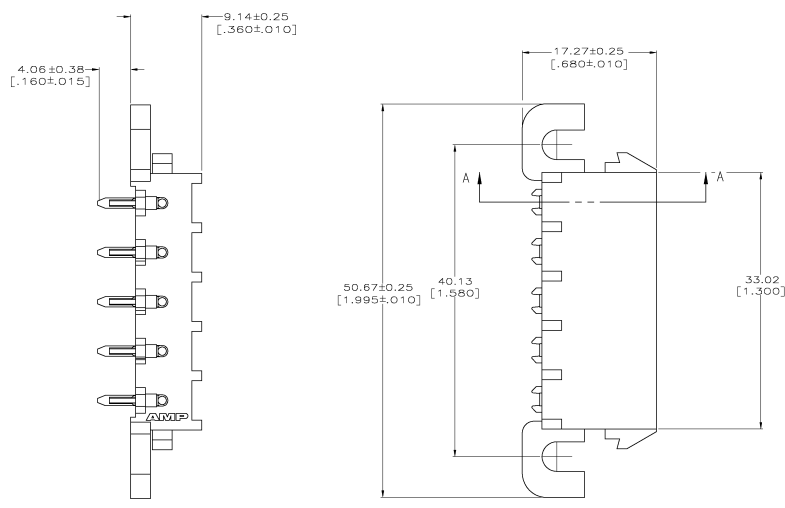
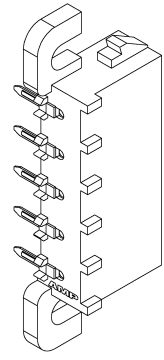
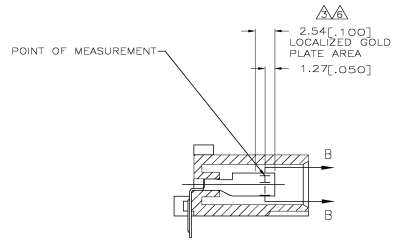
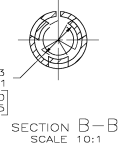
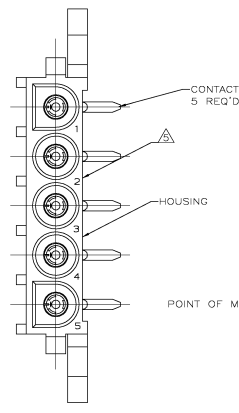


REV	DATE	DESCRIPTION	BY	CHK	APP
00					
01		REVISED PER EC 0638-1094-04	D		214P/MSD KW SR

- PARTS COMPLY WITH AMP SOLDERABILITY SPECIFICATION 109-11-5.
- TOLERANCE NON-CUMULATIVE.
- 0.00078 [.000030] GOLD OVER 0.00127 [.000050] MIN NICKEL WITH MATTE TIN LEAD ON SOLDER TAIL.
- DIMENSIONS IN BRACKETS ARE IN INCHES.
- CIRCUIT IDENTIFICATION CHARACTERS ARE ADJACENT TO THE INDICATED CAVITIES, BUT LOCATION AND ORIENTATION MAY DIFFER FROM PRINT.
- 0.00078 [.000030] GOLD OVER 0.00127 [.000050] MIN NICKEL WITH MATTE TIN ON SOLDER TAIL.



RECOMMENDED MOUNTING HOLE PATTERN FOR .062 [1.57] THICK P.C. BOARD



CONTACT	HOUSING	PART NUMBER
PH BRZ GOLD, Δ	NYLON UL 94V-0	3-643232-0
PH BRZ GOLD, Δ	NYLON UL 94V-0	643232-2
PH BRZ PRE-TIN	NYLON UL 94V-0	643232-1

THIS DRAWING IS A CONTROLLED DOCUMENT		REV: 00	DATE: 12/19/03	BY: D	CHK: KW	APP: SR
DRAWING NO: 643232		REV: 00	DATE: 12/19/03	BY: D	CHK: KW	APP: SR
DESCRIPTION: SOCKET HEADER ASSEMBLY, RIGHT ANGLE MOUNT'S POSITION, UNIVERSAL MATE-IN-LOCKING		REV: 00	DATE: 12/19/03	BY: D	CHK: KW	APP: SR
CUSTOMER DRAWING		REV: 00	DATE: 12/19/03	BY: D	CHK: KW	APP: SR

