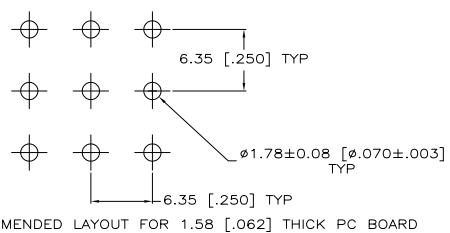
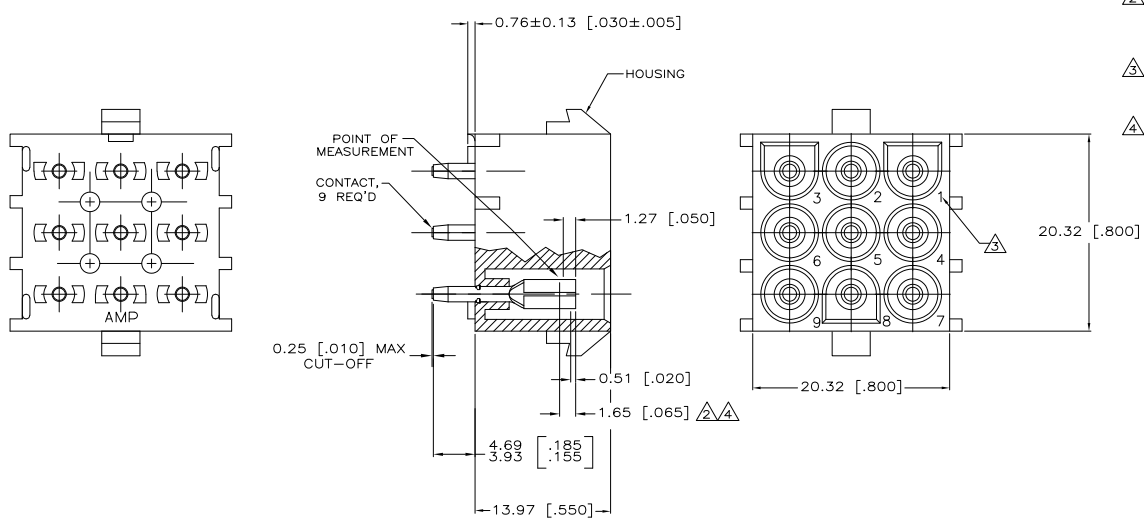


REVISES		DATE	BY	APP'D
CM	00			
L		REVISED PER 8026-1100-04	12/02/06	KW SR

- PARTS MUST COMPLY WITH AMP SOLDERABILITY SPEC 109-11-3.
- CONTACT IS STAMPED FROM PRE-PLATED STOCK WHICH IS PLATED OVERALL WITH 0.00127 [0.00050] NICKEL, THEN STRIPED WITH 0.00076 [0.00030] GOLD IN CONTACT AREA INDICATED AND TIN-LEAD ON SOLDER TAIL END.
- CIRCUIT IDENTIFICATION CHARACTERS ARE ADJACENT TO THE INDICATED CAVITIES, BUT LOCATION AND ORIENTATION MAY DIFFER FROM PRINT.
- CONTACT IS PLATED OVERALL WITH 0.00127 [0.00050] NICKEL, THEN 0.00076 [0.00030] GOLD OVER CONTACT LENGTH INDICATED AND MATTE TIN ON SOLDER TAIL END.



PH BRZ GOLD $\Delta$	NYLON, NATURAL	350763-5
PH BRZ TIN	NYLON, NATURAL	350763-4
PH BRZ GOLD $\Delta$	NYLON, NATURAL	350763-3
CONTACT	HOUSING	PART NO



THIS DRAWING IS A CONTROLLED DOCUMENT.

UNLESS OTHERWISE SPECIFIED	ALL DIMENSIONS ARE IN INCHES	UNLESS OTHERWISE SPECIFIED	ALL DIMENSIONS ARE IN MILLIMETERS
UNLESS OTHERWISE SPECIFIED	ALL DIMENSIONS ARE IN INCHES	UNLESS OTHERWISE SPECIFIED	ALL DIMENSIONS ARE IN MILLIMETERS

9 CIRCUIT UNIVERSAL MATE-IN-LOCK (TM) P.C. BOARD SOCKET HEADER ASSEMBLY

SEE THIS SIZE DRAWING 10

DATE 5/1 1 1 1