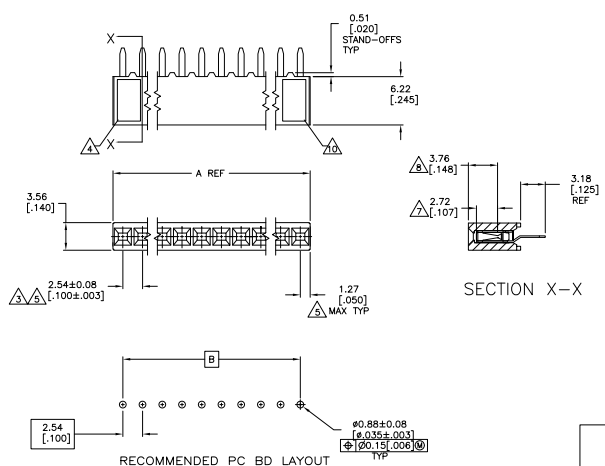


THIS DRAWING IS UNPUBLISHED
 © 2008 ETE INC. ALL RIGHTS RESERVED

REV	DATE	DESCRIPTION	BY	CHK	APP
AD	00	REVISION			
NS		REVISED PER EDD-11-004587			



- △ HOUSING: FLAME RETARDANT, GLASS FILLED, POLYESTER, COLOR: BLACK.
CONTACT: PHOSPHOR BRONZE
- △ CONTACT: DUPLEX PLATED 0.76µm[0.00030] MIN GOLD IN CONTACT AREA, 3.81-7.62µm[0.00150-0.00300] BRIGHT TIN-LEAD ON LEADS ALL OVER 1.27µm[0.00050] MIN NICKEL
- △ THESE DIMENSIONS PERTAIN TO CAVITY CENTERLINES ONLY - NOT TO CONTACT LOCATIONS
- △ PART NUMBER AND DATE CODE ARE MARKED IN APPROXIMATE LOCATION SHOWN.
- △ TOLERANCE IS NON-CUMULATIVE.
- △ 2 POSITION DATE CODE IS MARKED OPPOSITE SIDE OF THE CONNECTIVITY LOGO.
- △ POINT-OF-MEASUREMENT DIMENSION FOR PLATING THICKNESS (INSIDE CONTACT BEAM).
- △ POINT-OF-CONTACT DIMENSION.
- △ NO PART NUMBER MARKING REQUIRED FOR THIS PART.
- △ THE CONNECTIVITY LOGO AND CSA LOGO ARE MOLDED INTO HOUSING.
- △ CONTACT: DUPLEX PLATED 0.76µm[0.00030] MIN GOLD IN CONTACT AREA, 3.81-7.62µm[0.00150-0.00300] MATTE TIN ON LEADS ALL OVER 1.27µm[0.00050] MIN NICKEL
- △ ROHS 2002/95/EC COMPLIANT.
- △ OBSOLETE PARTS: OBSOLETE CIS STREAMLINING PER D.RENAUD/D.SINISI

FINISH	B	A	NO. OF POSN	PART NUMBER
△	2.54 [100]	5.08 [200]	2	△ 5-535541-9
△	99.06 [3.900]	101.60 [4.000]	40	△ 5-535541-8
△	96.52 [3.800]	99.06 [3.900]	39	△ 5-535541-7
△	93.98 [3.700]	96.52 [3.800]	38	△ 5-535541-6
△	91.44 [3.600]	93.98 [3.700]	37	△ 5-535541-5
△	88.90 [3.500]	91.44 [3.600]	36	△ 5-535541-4
△	86.36 [3.400]	88.90 [3.500]	35	△ 5-535541-3
△	83.82 [3.300]	86.36 [3.400]	34	△ 5-535541-2
△	81.28 [3.200]	83.82 [3.300]	33	△ 5-535541-1
△	78.74 [3.100]	81.28 [3.200]	32	△ 5-535541-0
△	76.20 [3.000]	78.74 [3.100]	31	△ 7-535541-9
△	73.66 [2.900]	76.20 [3.000]	30	△ 7-535541-8
△	71.12 [2.800]	73.66 [2.900]	29	△ 7-535541-7
△	68.58 [2.700]	71.12 [2.800]	28	△ 7-535541-6
△	66.04 [2.600]	68.58 [2.700]	27	△ 7-535541-5
△	63.50 [2.500]	66.04 [2.600]	26	△ 7-535541-4
△	60.96 [2.400]	63.50 [2.500]	25	△ 7-535541-3
△	58.42 [2.300]	60.96 [2.400]	24	△ 7-535541-2
△	55.88 [2.200]	58.42 [2.300]	23	△ 7-535541-1
△	53.34 [2.100]	55.88 [2.200]	22	△ 7-535541-0
△	50.80 [2.000]	53.34 [2.100]	21	△ 6-535541-9
△	48.26 [1.900]	50.80 [2.000]	20	△ 6-535541-8
△	45.72 [1.800]	48.26 [1.900]	19	△ 6-535541-7
△	43.18 [1.700]	45.72 [1.800]	18	△ 6-535541-6
△	40.64 [1.600]	43.18 [1.700]	17	△ 6-535541-5
△	38.10 [1.500]	40.64 [1.600]	16	△ 6-535541-4
△	35.56 [1.400]	38.10 [1.500]	15	△ 6-535541-3
△	33.02 [1.300]	35.56 [1.400]	14	△ 6-535541-2
△	30.48 [1.200]	33.02 [1.300]	13	△ 6-535541-1
△	27.94 [1.100]	30.48 [1.200]	12	△ 6-535541-0
△	25.40 [1.000]	27.94 [1.100]	11	△ 5-535541-9
△	22.86 [0.900]	25.40 [1.000]	10	△ 5-535541-8
△	20.32 [0.800]	22.86 [0.900]	9	△ 5-535541-7
△	17.78 [0.700]	20.32 [0.800]	8	△ 5-535541-6
△	15.24 [0.600]	17.78 [0.700]	7	△ 5-535541-5
△	12.70 [0.500]	15.24 [0.600]	6	△ 5-535541-4
△	10.16 [0.400]	12.70 [0.500]	5	△ 5-535541-3
△	7.62 [0.300]	10.16 [0.400]	4	△ 5-535541-2
△	5.08 [0.200]	7.62 [0.300]	3	△ 5-535541-1

△	99.06 [3.900]	101.60 [4.000]	40	△ 3-535541-8
△	96.52 [3.800]	99.06 [3.900]	39	△ 3-535541-7
△	93.98 [3.700]	96.52 [3.800]	38	△ 3-535541-6
△	91.44 [3.600]	93.98 [3.700]	37	△ 3-535541-5
△	88.90 [3.500]	91.44 [3.600]	36	△ 3-535541-4
△	86.36 [3.400]	88.90 [3.500]	35	△ 3-535541-3
△	83.82 [3.300]	86.36 [3.400]	34	△ 3-535541-2
△	81.28 [3.200]	83.82 [3.300]	33	△ 3-535541-1
△	78.74 [3.100]	81.28 [3.200]	32	△ 3-535541-0
△	76.20 [3.000]	78.74 [3.100]	31	△ 2-535541-9
△	73.66 [2.900]	76.20 [3.000]	30	△ 2-535541-8
△	71.12 [2.800]	73.66 [2.900]	29	△ 2-535541-7
△	68.58 [2.700]	71.12 [2.800]	28	△ 2-535541-6
△	66.04 [2.600]	68.58 [2.700]	27	△ 2-535541-5
△	63.50 [2.500]	66.04 [2.600]	26	△ 2-535541-4
△	60.96 [2.400]	63.50 [2.500]	25	△ 2-535541-3
△	58.42 [2.300]	60.96 [2.400]	24	△ 2-535541-2
△	55.88 [2.200]	58.42 [2.300]	23	△ 2-535541-1
△	53.34 [2.100]	55.88 [2.200]	22	△ 2-535541-0
△	50.80 [2.000]	53.34 [2.100]	21	△ 1-535541-9
△	48.26 [1.900]	50.80 [2.000]	20	△ 1-535541-8
△	45.72 [1.800]	48.26 [1.900]	19	△ 1-535541-7
△	43.18 [1.700]	45.72 [1.800]	18	△ 1-535541-6
△	40.64 [1.600]	43.18 [1.700]	17	△ 1-535541-5
△	38.10 [1.500]	40.64 [1.600]	16	△ 1-535541-4
△	35.56 [1.400]	38.10 [1.500]	15	△ 1-535541-3
△	33.02 [1.300]	35.56 [1.400]	14	△ 1-535541-2
△	30.48 [1.200]	33.02 [1.300]	13	△ 1-535541-1
△	27.94 [1.100]	30.48 [1.200]	12	△ 1-535541-0
△	25.40 [1.000]	27.94 [1.100]	11	△ 535541-9
△	22.86 [0.900]	25.40 [1.000]	10	△ 535541-8
△	20.32 [0.800]	22.86 [0.900]	9	△ 535541-7
△	17.78 [0.700]	20.32 [0.800]	8	△ 535541-6
△	15.24 [0.600]	17.78 [0.700]	7	△ 535541-5
△	12.70 [0.500]	15.24 [0.600]	6	△ 535541-4
△	10.16 [0.400]	12.70 [0.500]	5	△ 535541-3
△	7.62 [0.300]	10.16 [0.400]	4	△ 535541-2
△	5.08 [0.200]	7.62 [0.300]	3	△ 535541-1

THIS DRAWING IS A CONTROLLED DOCUMENT. ETE INC. 108-25022
 REPTASSY, MOD IV, SINGLE ROW, 100CL, VERTICAL BOARD MOUNT, CLOSED, TOP ENTRY, SHORT PWT. OF CONTACT

114-25018
 CUSTOMER DRAWING A1 00779 C=535541