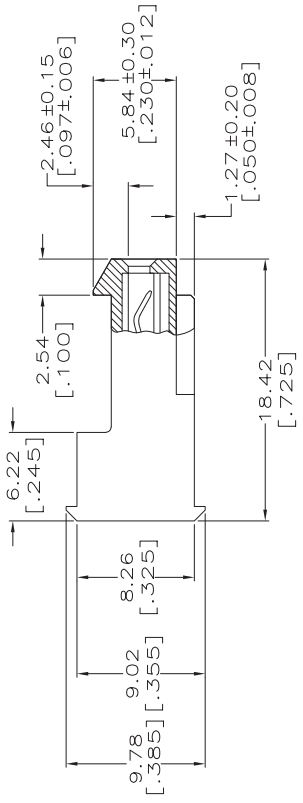
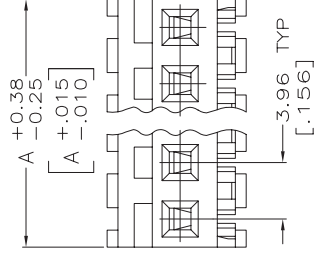
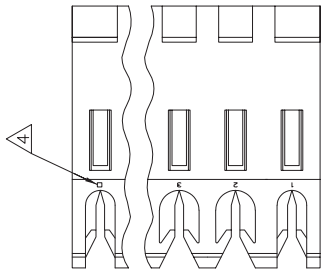


THIS DRAWING IS UNPUBLISHED. RELEASED FOR PUBLICATION BY TYCO ELECTRONICS CORPORATION. ALL RIGHTS RESERVED.



**MATERIAL:**  
 CONNECTOR - NYLON UL94V-2 (YELLOW).  
 CONTACTS - 0.30[0.12] THICK COPPER ALLOY.  
 PLATING - 0.0038[0.00015] GOLD IN CONTACT AREA.  
 0.00203[0.00080] MIN THICKNESS BRIGHT  
 TIN-LEAD IN SLOT AREA FOR 641169-2 THRU  
 2-641169-4 OR MATTE WHISKER MITIGATED  
 TIN IN THE SLOT AREA FOR 3-641169-2 THRU  
 5-641169-4 OVER NICKEL UNDERPLATE.

2. CONTACTS ACCEPT 20 AWG WIRE WITH 2.41[0.095] MAX INSULATION DIAMETER.
3. CONTACTS MUST ACCEPT 1.14±0.03[0.045±0.001] SQUARE POST AND REMAIN LOCKED IN POSITION.
4. IDENTIFICATION NUMBER FOR LAST CIRCUIT MAY NOT APPEAR ON ALL ASSEMBLIES.
5. DIMENSIONS IN BRACKETS ARE IN INCHES.
6. HOUSING FEATURES ARE: FEED-THRU WITH LOCKING RAMP.

NOTE DELETED.  
 NOTE DELETED.



LOC	DIST	REVISONS	DATE	UN	APP
CM	O	DESCRIPTION	21JUN07	KW	DB
FP	LINK	ECO-07-012879			
H					

NO.	FINISH	NO. OF CIRCUITS	PART NO.
95.10	[3.744]	24	5-641169-4
91.14	[3.588]	23	5-641169-3
87.17	[3.432]	22	5-641169-2
83.21	[3.276]	21	5-641169-1
79.25	[3.120]	20	5-641169-0
75.29	[2.964]	19	4-641169-9
71.32	[2.808]	18	4-641169-8
67.36	[2.652]	17	4-641169-7
63.40	[2.496]	16	4-641169-6
59.44	[2.340]	15	4-641169-5
55.47	[2.184]	14	4-641169-4
51.51	[2.028]	13	4-641169-3
47.55	[1.872]	12	4-641169-2
43.59	[1.716]	11	4-641169-1
39.62	[1.560]	10	4-641169-0
35.66	[1.404]	9	3-641169-9
31.70	[1.248]	8	3-641169-8
27.74	[1.092]	7	3-641169-7
23.77	[0.936]	6	3-641169-6
19.81	[0.780]	5	3-641169-5
15.85	[0.624]	4	3-641169-4
11.89	[0.468]	3	3-641169-3
7.92	[0.312]	2	3-641169-2
95.10	[3.744]	24	2-641169-4
91.14	[3.588]	23	2-641169-3
87.17	[3.432]	22	2-641169-2
83.21	[3.276]	21	2-641169-1
79.25	[3.120]	20	2-641169-0
75.29	[2.964]	19	1-641169-9
71.32	[2.808]	18	1-641169-8
67.36	[2.652]	17	1-641169-7
63.40	[2.496]	16	1-641169-6
59.44	[2.340]	15	1-641169-5
55.47	[2.184]	14	1-641169-4
51.51	[2.028]	13	1-641169-3
47.55	[1.872]	12	1-641169-2
43.59	[1.716]	11	1-641169-1
39.62	[1.560]	10	1-641169-0
35.66	[1.404]	9	641169-9
31.70	[1.248]	8	641169-8
27.74	[1.092]	7	641169-7
23.77	[0.936]	6	641169-6
19.81	[0.780]	5	641169-5
15.85	[0.624]	4	641169-4
11.89	[0.468]	3	641169-3
7.92	[0.312]	2	641169-2

THIS DRAWING IS A CONTROLLED DOCUMENT.		REV	DATE	BY
DIMENSIONS:		OK	3-11-98	B. LEWIS
mm [INCHES]		SWING	3-11-98	
TOLERANCES UNLESS OTHERWISE SPECIFIED:		Tyco Electronics Corporation Harrisburg, Pa 17105-3608		
0 PLG ±	PRODUCT SPEC	MTA-156 CONNECTOR ASSEMBLY, 20 AWG, STANDARD		
1 PLG ±	APPLICATION SPEC	DRAWING NO		
2 PLG ±	108-1051	A2 00779		
3 PLG ±	114-1020	SCALE 4:1		
ANGLES ±	WEIGHT	SHEET 1 OF 1		
FINISH	CUSTOMER DRAWING	RESTRICTED TO		
MATERIAL		641169		