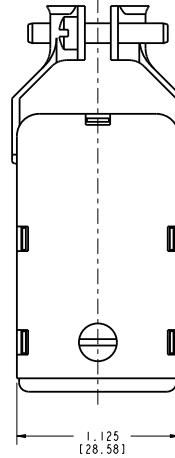


PART NUMBER	SIZE	L	CABLE OPENING	FACTORY NUMBER
S-2404H-CCT	4	1.063 [27.00]	.438 [11.13]	703 04 04 002
S-2406H-CCT	6	1.500 [38.10]	.438 [11.13]	703 04 06 002
S-24084H-CCT	8	1.938 [49.23]	.563 [14.30]	703 04 08 002
S-2410H-CCT	10	2.375 [60.33]	.563 [14.30]	703 04 10 002
S-2412H-CCT	12	1.813 [46.05]	.625 [15.88]	703 04 12 002



DRAWING REVISIONS			
REV	DOCUMENT	APP	DATE
I	DO 06-1068		

- NOTES:
- SPECIFICATIONS:
 - ELECTRICAL:
 - OPERATING VOLTAGE: 250 VAC RMS
 - CURRENT RATING: 15 AMPS
 - CURRENT RESISTANCE: 1.0 MILLIOHMS MAXIMUM
 - INSULATOR: MOLDED MONBLOCK, GENERAL PURPOSE PHENOLIC, BLACK
 - CONTACT: PHOSPHOR BRONZE, MATTE TIN
 - BRACKET, SCREW: STEEL, ZINC WITH CLEAR TRVALENT CHROME
 - CAP: BLACK CRINKLE
 - LINER: PAPER, CELLULOSE BASED, UL 94V-0
 - ENVIRONMENTAL:
 - OPERATING TEMPERATURE: UP TO +105°C
 - TERMINATION: SOLDER
 - DIMENSIONS IN [] ARE MILLIMETERS
 - ALL DIMENSIONS ARE REFERENCE

RoHS COMPLIANT

ENGLISH INCHES DO NOT SCALE DRAWING UNLESS OTHERWISE SPECIFIED: DIMENSIONS ARE IN INCHES FRACTIONS TO MAX. 1/32 DECIMALS TO 2 PLACES DIMENSIONS TO BE ASSEMBLED		DRAWN BY JIMENEZ DATE 8/1/06	TITLE SOCKET AND CAP ASSEMBLIES	CONTROL SPEC NUMBER 06-1068
DESIGN ENGINEER A. BALI DESIGN ENGINEERING MGR.	DATE 8/1/06	MATERIAL SPEC NUMBER	FINISH	PROJECT NUMBER C14789-2
MFG. ENGINEERING QUALITY ASSURANCE	CAD FILE NUMBER S2404HCCT	DRAWING NUMBER S-2404H-CCT	SCALE 1.000	SHEET OF 1