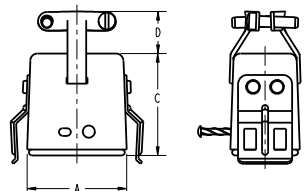
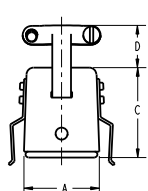
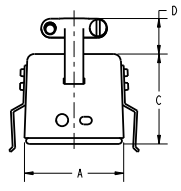
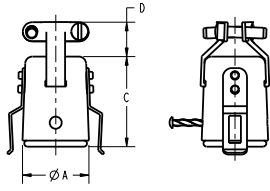
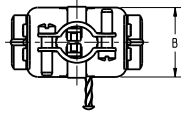
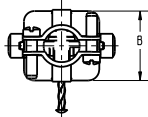
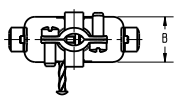
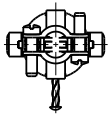


DRAWING REVISIONS			
REV	DOCUMENT	APP	DATE
I	DO 06-1067		



TYPE 1

TYPE 2

TYPE 3

TYPE 4

PART NUMBER	TYPE	A REF	B REF	C REF	D REF	CABLE OPENING REF	FACTORY NUMBER
S-302H-CCT-K	1	∅.691 [∅17.55]	-	.953 [24.21]	.359 [9.12]	.375 [9.53]	703 02 02 004
S-303H-CCT-K	2	1.034 [26.26]	.472 [11.99]	.953 [24.21]	.359 [9.12]	.313 [7.95]	703 02 03 004
S-304H-CCT-K	3	.786 [19.96]	.724 [18.39]	.953 [24.21]	.468 [11.89]	.375 [9.53]	703 02 04 004
S-306H-CCT-K	4	1.036 [26.31]	.724 [18.39]	1.078 [27.38]	.484 [12.29]	.438 [11.13]	703 02 06 004

NOTES:

1. SPECIFICATIONS:

ELECTRICAL:
 OPERATING VOLTAGE: 250 VAC RMS
 CURRENT RATING: 10 AMPS
 CONTACT RESISTANCE: 16 MILLIOHMS MAX

INSULATOR, CAP, RIVET: GENERAL PURPOSE PHENOLIC, BLACK

CONTACT: BRASS, MATTE TIN

BRACKET, SCREW, DRIVE PIN: STEEL, ZINC WITH CLEAR TRIVALENT CHROMATE

ENVIRONMENTAL:
 OPERATING TEMPERATURE: UP TO +105°C

TERMINATION: SOLDER

2. DIMENSIONS IN [] ARE IN MILLIMETERS

3. ALL DIMENSIONS ARE REFERENCE

RoHS COMPLIANT

ENGLISH INCHES DO NOT SCALE DRAWING UNLESS OTHERWISE SPECIFIED: DIMENSIONS ARE IN INCHES TOLERANCES FRACTIONS: ±.005 DECIMALS: ±.001 HOLE DIA: ±.001 ASSEMBLY: ±.001 THIS DOCUMENT IS THE PROPERTY OF CINCH. NEITHER THIS DOCUMENT NOR ANY OF THE INFORMATION CONTAINED HEREIN IS TO BE REPRODUCED OR TRANSMITTED IN ANY FORM OR BY ANY MEANS WITHOUT THE WRITTEN CONSENT OF CINCH.		DRAWN BY: JIMENEZ DESIGN ENGINEER: A. BALI DESIGN ENGINEERING MGR.: MFG. ENGINEERING: QUALITY ASSURANCE:	DATE: 6/20/06 DATE: 6/20/06	TITLE: SOCKET ASSEMBLY CABLE CLAMP TOP W/KEEPER MATERIAL: MATERIAL SPEC NUMBER: FINISH: PROJECT NUMBER: C14789-1	CONTROL SPEC NUMBER: 06-1067 DRAWING NUMBER: S302HCCTK CAGE IDENT NO.: 71785 SCALE: 1:1 SHEET 1 OF 1
---	--	--	--------------------------------	--	--