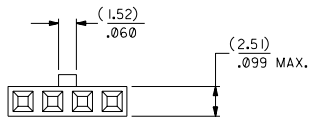


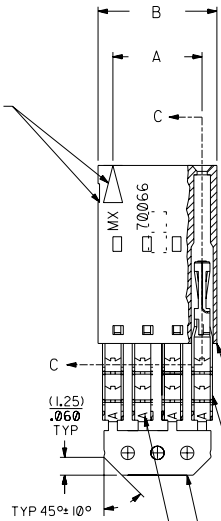
# OPTION E



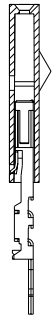
## NOTES:

- 1) TO BE USED WITH (24) AWG. STRANDED WIRE WITH (1.35)/.053 DIA. MAX. INSULATION.
- 2) SEE CHART FOR CIRCUIT SIZES.
- 3) STANDARD PACKAGING PER PK-70873-0001. OPTIONAL PACKAGING MAY BE AVAILABLE, REQUEST DWG. PK-70400
- 4) PARTS STACKABLE END TO END ON (2.54)/.100 CENTERS.
- 5) REFER TO PRODUCT SPECIFICATION; PS-70400.
- 6) SEE DWG. SDA-70400-\*\*\*\* (SHT. 5) FOR OPTIONAL HOUSING DETAILS.
- 7) 4 CIRCUIT SHOWN.
- 8) TO MATE WITH MOLEX PART NO'S.: A-70390-\*\*\*\*, A-70392-\*\*\*\*, A-70374-\*\*\*\*, A-70376-\*\*\*\*, A-70542-\*\*\*\*, A-70552-\*\*\*\*, A-70544-\*\*\*\*, A-70554-\*\*\*\*, A-70546-\*\*\*\*, A-70556-\*\*\*\*, A-70558-\*\*\*\*.
- 9) 2 CIRCUIT ASSEMBLIES SUPPLIED AS GROUPED PAIRS.

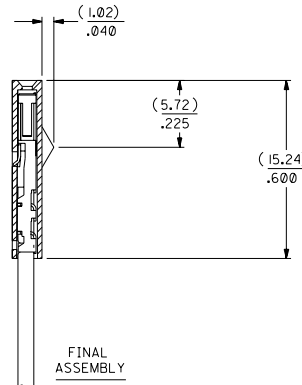
CIRCUIT NO. 1  
SLOT OR ARROW



## SECTION C-C



PRE-LOADED ASSEMBLY



FINAL ASSEMBLY

HOUSING PART NO. 70066-\*\*\*\*  
MATERIAL: G.F. POLYESTER, 94V-0

TERMINAL PART NO. 70028-\*\*\*\*  
MATERIAL: PHOSPHOR BRONZE  
PLATING PER ES-88-\*\*\*\*

TIN - .000150 MIN. TIN OVER  
.000050 MIN. NICKEL PLATE.

| I.D. SLOT CODE TO WIRE GAUGE CHART |            |
|------------------------------------|------------|
| I.D. SLOT CODE                     | WIRE GAUGE |
| A                                  | 24 AWG.    |

| PLATING CODE (STRIPE ON CARRIER STRIP) |       |
|--|-------|
| PLATING                                | COLOR |
| TIN                                    | NONE  |

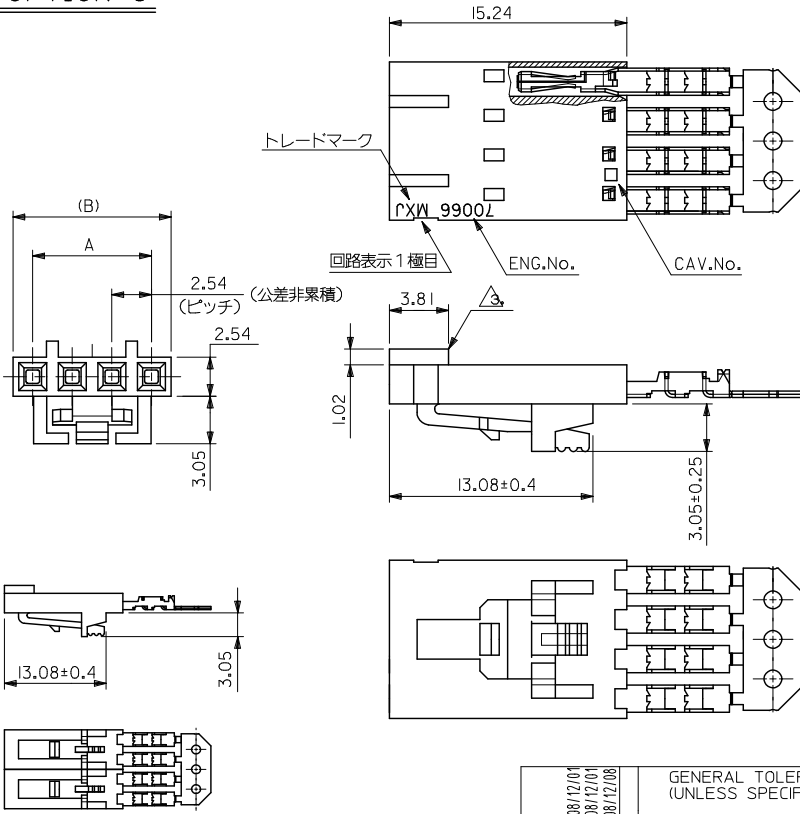
•THE PRIMARY SHIPPING CARTON WILL BE LABELED "COMPLIANT TO RoHS DIRECTIVE 2002/95/EC AND ELV ANNEX II OF DIRECTIVE 2000/53/EC". CARTONS WITHOUT THIS LABEL MAY CONTAIN PRODUCT WITH LEAD.

| CKT. SIZE | 70400              |                    | EDP. NO. | ENG. NO. |
|-----------|--------------------|--------------------|----------|----------|
|           | A                  | B                  |          |          |
| 2         | ( 2.54 )<br>.100   | ( 5.05 )<br>.199   |          |          |
| 3         | ( 5.08 )<br>.200   | ( 7.59 )<br>.299   |          |          |
| 4         | ( 7.62 )<br>.300   | ( 10.13 )<br>.399  |          |          |
| 5         | ( 10.16 )<br>.400  | ( 12.67 )<br>.499  |          |          |
| 6         | ( 12.70 )<br>.500  | ( 15.21 )<br>.599  |          |          |
| 7         | ( 15.24 )<br>.600  | ( 17.75 )<br>.699  |          |          |
| 8         | ( 17.78 )<br>.700  | ( 20.29 )<br>.799  |          |          |
| 9         | ( 20.32 )<br>.800  | ( 22.83 )<br>.899  |          |          |
| 10        | ( 22.86 )<br>.900  | ( 25.37 )<br>.999  |          |          |
| 11        | ( 25.54 )<br>1.000 | ( 27.91 )<br>1.099 |          |          |
| 12        | ( 27.94 )<br>1.100 | ( 30.45 )<br>1.199 |          |          |
| 13        | ( 30.48 )<br>1.200 | ( 32.99 )<br>1.299 |          |          |
| 14        | ( 33.02 )<br>1.300 | ( 35.53 )<br>1.399 |          |          |
| 15        | ( 35.56 )<br>1.400 | ( 38.07 )<br>1.499 |          |          |
| 16        | ( 38.01 )<br>1.500 | ( 40.61 )<br>1.599 |          |          |
| 17        | ( 40.64 )<br>1.600 | ( 43.15 )<br>1.699 |          |          |
| 18        | ( 43.18 )<br>1.700 | ( 45.69 )<br>1.799 |          |          |
| 19        | ( 45.72 )<br>1.800 | ( 48.23 )<br>1.899 |          |          |
| 20        | ( 48.26 )<br>1.900 | ( 50.77 )<br>1.999 |          |          |
| 21        | ( 50.80 )<br>2.000 | ( 53.31 )<br>2.099 |          |          |
| 22        | ( 53.34 )<br>2.100 | ( 55.85 )<br>2.199 |          |          |
| 23        | ( 55.88 )<br>2.200 | ( 58.39 )<br>2.299 |          |          |
| 24        | ( 58.42 )<br>2.300 | ( 60.93 )<br>2.399 |          |          |
| 25        | ( 60.96 )<br>2.400 | ( 63.47 )<br>2.499 |          |          |

|  |  |  |  |  |  |  |  |  |  |
|--|--|--|--|--|--|--|--|--|--|
| MFG. SH. REV.  |  | REVISIONS  |  | REVISIONS  |  | REVISIONS  |  | REVISIONS  |  |
| LTR.   |  | LTR.   |  | LTR.   |  | LTR.   |  | LTR.   |  |
| APPR.  |  | APPR.  |  | APPR.  |  | APPR.  |  | APPR.  |  |
| BY   |  | BY   |  | BY   |  | BY   |  | BY   |  |
| SCALE  |  | SCALE  |  | SCALE  |  | SCALE  |  | SCALE  |  |
| 4 : 1  |  | 4 : 1  |  | 4 : 1  |  | 4 : 1  |  | 4 : 1  |  |
| FILE NAME  |  | FILE NAME  |  | FILE NAME  |  | FILE NAME  |  | FILE NAME  |  |
| NO. DRAWING CONTAINS INFORMATION THAT IS PROPRIETARY TO MOLEX INC. AND SHOULD NOT BE USED WITHOUT WRITTEN PERMISSION. DA |  | NO. DRAWING CONTAINS INFORMATION THAT IS PROPRIETARY TO MOLEX INC. AND SHOULD NOT BE USED WITHOUT WRITTEN PERMISSION. DA |  | NO. DRAWING CONTAINS INFORMATION THAT IS PROPRIETARY TO MOLEX INC. AND SHOULD NOT BE USED WITHOUT WRITTEN PERMISSION. DA |  | NO. DRAWING CONTAINS INFORMATION THAT IS PROPRIETARY TO MOLEX INC. AND SHOULD NOT BE USED WITHOUT WRITTEN PERMISSION. DA |  | NO. DRAWING CONTAINS INFORMATION THAT IS PROPRIETARY TO MOLEX INC. AND SHOULD NOT BE USED WITHOUT WRITTEN PERMISSION. DA |  |

10 9 8 7 6 5 4 3 2 1

**OPTION G**



**2極の場合**  
(SCALE:2-1)

**注記:**

1. 材料  
ハウジング: ガラス入りポリエステル UL 94V-0  
ターミナル: 磷青銅
  2. 仕上げ  
接点部 : 金メッキ 0.38 μm MIN.  
圧接部 : 錫メッキ 1.91 μm MIN.  
下地メッキ: ニッケルメッキ 1.27 μm MIN.
- △3. 極性リップは、2極及び3極の場合1箇所のみとする。  
但し3極の場合のリップは、1極目と2極目の間とする。
4. 適合オスコネクター: 70107-\*\*\*\*, 70018-\*\*\*\*
  5. 適合ヘッダー: 70389-\*\*\*\*, 70391-\*\*\*\*
  6. ハウジングの色: 黒

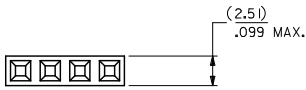
|       |       |              |    |
|-------|-------|--------------|----|
| 60.96 | 58.42 | 70400-0688   | 24 |
| 58.42 | 55.88 | 70400-0687   | 23 |
| 48.26 | 45.72 | 70400-0683   | 19 |
| 40.64 | 38.10 | 70400-0680   | 16 |
| 38.10 | 35.56 | 70400-0679   | 15 |
| 35.56 | 33.02 | 70400-0678   | 14 |
| 33.02 | 30.48 | 70400-0677   | 13 |
| 27.94 | 25.40 | 70400-0675   | 11 |
| 25.40 | 22.86 | 70400-0674   | 10 |
| 22.86 | 20.32 | 70400-0673   | 9  |
| (B)   | A     | MATERIAL No. | 極数 |

|   |   |                                   |                            |      |              |   |                              |                     |
|---|---|-----------------------------------|----------------------------|------|--------------|---|------------------------------|---------------------|
| REVISED<br>EEC NO: J2009-0453<br>DRAWN BY: DRW:YOSHIDAM<br>CHECKED BY: CHYK:THARYAMA<br>APPROVED BY: APPR:NIKIITA<br>2008/12/01<br>2008/12/01<br>2008/12/08 | GENERAL TOLERANCES<br>(UNLESS SPECIFIED)                                  |                                   | DIMENSION STYLE<br>MM ONLY |      | SCALE<br>4:1 | DESIGN UNITS<br>METRIC  | THIRD ANGLE<br>PROJECTION    |                     |
|   | 10 UNDER ±0.2<br>10 OVER 30 UNDER ±0.25<br>30 OVER ±0.3                   | DRAWN BY<br>T. FURUHATA '87/11/17 |                            | DATE |              | TITLE<br>254 SINGLE ROW ASSY<br>FEMALE I.D.CONN OPTION G<br>-LEAD FREE- |                              |                     |
|   | ANGULAR ±3°<br>DRAFT WHERE APPLICABLE<br>MUST REMAIN<br>WITHIN DIMENSIONS | CHECKED BY<br>M. SASAO            |                            | DATE |              | MOLEX INCORPORATED  |                              |                     |
|   | MATERIAL NO.<br>SEE TABLE   |                                   | APPROVED BY<br>S. YAMADA   |      | DATE         |   | DOCUMENT NO.<br>SD-70400-010 | SHEET NO.<br>1 OF 1 |

13 12 11 10 9 8 7 6 5 4 3 2 1

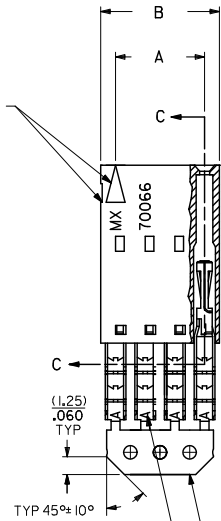
# OPTION A

- NOTES:
- MATERIAL:  
HOUSING: POLYESTER(FBT), GLASS FILLED, UL94 V-0,  
COLOR: BLACK  
TERMINAL: PHOSPHOR BRONZE
  - FINISH:  
15 GOLD: 0.38 MICROMETERS/15 MICROINCHES MINIMUM GOLD IN  
1.91 MICROMETERS/75 MICROINCHES MINIMUM TIN  
OVER NICKEL UNDERPLATE OVERALL
  - TO BE USED WITH 24 AWG STRANDED WIRE WITH (1.35)/.053  
DIAMETER MAXIMUM INSULATION
  - SEE TABLE FOR AVAILABLE CIRCUIT SIZES
  - STANDARD PACKAGING PER PK-70873-0001. OPTIONAL PACKAGING  
MAY BE AVAILABLE. REQUEST CIRCUIT SIZES
  - PARTS STACKABLE END TO END ON (2.54)/.100 CENTERS
  - PRODUCT SPECIFICATION: PS-70400
  - SEE DRAWING SDA-70400-\*\*\*\* (SHEET 3) FOR OPTIONAL  
HOUSING DETAILS
  - 4 CIRCUIT SHOWN
  - TO MATE WITH MOLEX 2.54/.100 CENTERLINE HEADERS
  - 2 CIRCUIT ASSEMBLIES SUPPLIED AS GROUPED PAIRS

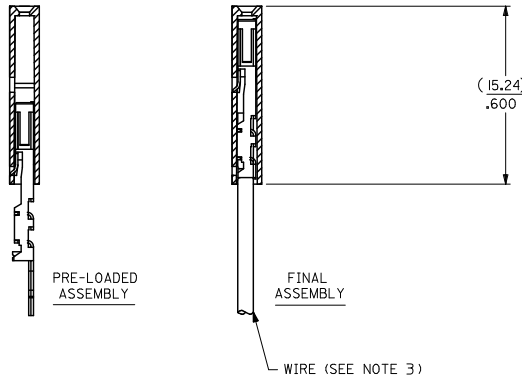


| CKT. SIZE | A                  | B                  | EDP. NO.   |
|-----------|--------------------|--------------------|------------|
| 2         | ( 2.54 )<br>.100   | ( 5.05 )<br>.199   | I4-56-202I |
| 3         | ( 5.08 )<br>.200   | ( 7.59 )<br>.299   | I4-56-203I |
| 4         | ( 7.62 )<br>.300   | ( 10.13 )<br>.399  | I4-56-204I |
| 5         | ( 10.16 )<br>.400  | ( 12.67 )<br>.499  | I4-56-205I |
| 6         | ( 12.70 )<br>.500  | ( 15.21 )<br>.599  | I4-56-206I |
| 7         | ( 15.24 )<br>.600  | ( 17.75 )<br>.699  | I4-56-207I |
| 8         | ( 17.78 )<br>.700  | ( 20.29 )<br>.799  | I4-56-208I |
| 9         | ( 20.32 )<br>.800  | ( 22.83 )<br>.899  | I4-56-209I |
| 10        | ( 22.86 )<br>.900  | ( 25.37 )<br>.999  | I4-56-210I |
| 11        | ( 25.40 )<br>1.000 | ( 27.91 )<br>1.099 | I4-56-211I |
| 12        | ( 27.94 )<br>1.100 | ( 30.45 )<br>1.199 | I4-56-212I |
| 13        | ( 30.48 )<br>1.200 | ( 32.99 )<br>1.299 | I4-56-213I |
| 14        | ( 33.02 )<br>1.300 | ( 35.53 )<br>1.399 | I4-56-214I |
| 15        | ( 35.56 )<br>1.400 | ( 38.07 )<br>1.499 | I4-56-215I |
| 16        | ( 38.10 )<br>1.500 | ( 40.61 )<br>1.599 | I4-56-216I |
| 17        | ( 40.64 )<br>1.600 | ( 43.15 )<br>1.699 | I4-56-217I |
| 18        | ( 43.18 )<br>1.700 | ( 45.69 )<br>1.799 | I4-56-218I |
| 19        | ( 45.72 )<br>1.800 | ( 48.23 )<br>1.899 | I4-56-219I |
| 20        | ( 48.26 )<br>1.900 | ( 50.77 )<br>1.999 | I4-56-220I |
| 21        | ( 50.80 )<br>2.000 | ( 53.31 )<br>2.099 | I4-56-221I |
| 22        | ( 53.34 )<br>2.100 | ( 55.85 )<br>2.199 | I4-56-222I |
| 23        | ( 55.88 )<br>2.200 | ( 58.39 )<br>2.299 | I4-56-223I |
| 24        | ( 58.42 )<br>2.300 | ( 60.93 )<br>2.399 | I4-56-224I |
| 25        | ( 60.96 )<br>2.400 | ( 63.47 )<br>2.499 | I4-56-225I |

CIRCUIT NO. I  
SLOT OR ARROW



## SECTION C-C



| I.D. SLOT CODE TO WIRE GAUGE CHART |            |
|------------------------------------|------------|
| I.D. SLOT CODE                     | WIRE GAUGE |
| A                                  | 24 AWG.    |

| PLATING CODE (STRIPE ON CARRIER STRIP) |        |
|--|--------|
| PLATING                                | COLOR  |
| 15 GOLD                                | YELLOW |

| REMOVE ENG. NO.<br>EC NO. UEP2011-110<br>2010/10/19<br>DRW:MS BARRA<br>CHK:DJORDAN<br>APPR:SMILLER<br>2010/10/19<br>2010/11/24 | QUALITY SYMBOLS                                       | GENERAL TOLERANCES (UNLESS SPECIFIED)   | DIMENSION STYLE | SCALE  | DESIGN UNITS | THIRD ANGLE PROJECTION |        |         |          |        |         |          |        |        |         |        |        |       |      |      |  |
|--|---|---|-----------------|--|--------------|------------------------|--------|---------|----------|--------|---------|----------|--------|--------|---------|--------|--------|-------|------|------|--|
|  | $\nabla \neq 0$<br>$\nabla \neq 0$<br>$\nabla \neq 0$ | <table border="1"> <tr><th></th><th>mm</th><th>INCH</th></tr> <tr><td>4 PLACES</td><td>± .005</td><td>± .0005</td></tr> <tr><td>3 PLACES</td><td>± .010</td><td>± .0010</td></tr> <tr><td>2 PLACES</td><td>± .025</td><td>± .010</td></tr> <tr><td>1 PLACE</td><td>± 0.35</td><td>± .010</td></tr> </table> |                 | mm   | INCH         | 4 PLACES               | ± .005 | ± .0005 | 3 PLACES | ± .010 | ± .0010 | 2 PLACES | ± .025 | ± .010 | 1 PLACE | ± 0.35 | ± .010 | MM/IN | INCH | INCH |  |
|  |   | mm  | INCH            |  |              |                        |        |         |          |        |         |          |        |        |         |        |        |       |      |      |  |
|  | 4 PLACES  | ± .005  | ± .0005         |  |              |                        |        |         |          |        |         |          |        |        |         |        |        |       |      |      |  |
| 3 PLACES   | ± .010  | ± .0010   |                 |  |              |                        |        |         |          |        |         |          |        |        |         |        |        |       |      |      |  |
| 2 PLACES   | ± .025  | ± .010  |                 |  |              |                        |        |         |          |        |         |          |        |        |         |        |        |       |      |      |  |
| 1 PLACE  | ± 0.35  | ± .010  |                 |  |              |                        |        |         |          |        |         |          |        |        |         |        |        |       |      |      |  |
| DESCRIPTION  | ANGULAR ±1/2°   | DRAWN BY: MS BARRA<br>DATE: 2010/10/19<br>CHECKED BY: WAZ<br>DATE: 1984/10/09<br>APPROVED BY: SMILLER<br>DATE: 2010/11/24   | TITLE           | ASSEMBLY, SL CONNECTOR<br>SINGLE ROW<br>2.54/.100 GRID |              |                        |        |         |          |        |         |          |        |        |         |        |        |       |      |      |  |
| REV  | DRAFT WHERE APPLICABLE MUST REMAIN WITHIN DIMENSIONS  | SEE TABLE   | MATERIAL NO.    | DOCUMENT NO.   | SHEET NO.    |                        |        |         |          |        |         |          |        |        |         |        |        |       |      |      |  |