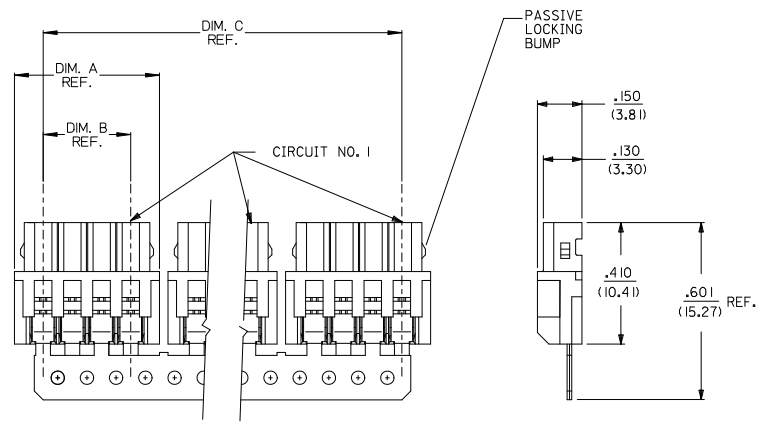


DISCRETE CONN. CKT SIZE	NO OF CONN. IN CHAIN	DIM. A	DIM. B	DIM. C	PASSIVE LOCKING BUMPS
2	10	.292 (7.42)	.098 (2.50)	2.756 (70.00)	YES
3	8	.390 (9.92)	.197 (5.00)	2.953 (75.00)	YES
4	6	.489 (12.42)	.295 (7.50)	2.756 (70.00)	YES
5	5	.587 (14.92)	.394 (10.00)	2.756 (70.00)	YES
6	4	.685 (17.40)	.492 (12.50)	2.556 (65.00)	YES
7	4	.783 (19.90)	.591 (15.00)	2.952 (75.00)	YES
8	3	.882 (22.40)	.689 (17.50)	2.461 (62.50)	YES
9	3	.980 (24.90)	.787 (20.00)	2.756 (70.00)	NO
10	2	1.079 (27.40)	.886 (22.50)	1.969 (50.00)	NO
11	2	1.177 (29.90)	.984 (25.00)	2.165 (55.00)	NO
12	2	1.276 (32.40)	1.082 (27.50)	2.362 (60.00)	NO
13	2	1.374 (34.90)	1.181 (30.00)	2.559 (65.00)	NO
14	2	1.472 (37.40)	1.279 (32.50)	2.756 (70.00)	NO
15	2	1.571 (39.90)	1.378 (35.00)	2.952 (75.00)	NO



NOTES:

- MATERIAL:
HOUSING: POLYESTER, 7.5% GLASS FILLED, 94V-0
TERMINAL: PHOS. BRONZE
- FINISH:
(P909) *OVERALL HOT TIN DIP: .000100/0.00254 MIN.
*THE PRIMARY SHIPPING CARTON WILL BE LABELED "COMPLIANT TO RoHS DIRECTIVE 2002/95/EC AND ELV ANNEX II OF DIRECTIVE 2000/53/EC". CARTONS WITHOUT THIS LABEL MAY CONTAIN PRODUCT WITH TIN/LEAD PLATINGS.
- FOR PRODUCT SPEC'S SEE PS-42219-0001
- PACKAGING SPECIFICATION: SEE LENGEND
- THE WIRE TERMINATION SPEC IS SMES-42219-0002.
- THIS PART CONFORMS TO CLASS B REQUIREMENTS OF COSMETIC SPECIFICATION PS-45499-002.

- 42219-N***
NO OF CKTS
HOUSING COLOR
PACKAGING SPEC.
BLANK= PK-70873-0140 (LARGE BOX)
I= PK-40873-0061 (SMALL BOX)
TERMINAL
BLANK=42218
- A= (NATURAL)
B= (BLUE)
C= (BROWN)
D= (RED)
E= (ORANGE)
F= (YELLOW)
G= (GREEN)
H= (GRAY)

3	J1
2	J1
1	J1

UPDATE NOTES EC NO: UGP2007-1815 DRAWN BY: DNER 2007/01/26 CHECKED BY: CHYKADBER 2007/01/30 APPROVED BY: APPR:PSITH 2007/02/01	QUALITY SYMBOLS	GENERAL TOLERANCES (UNLESS SPECIFIED)	DIMENSION STYLE IN/MM	SCALE 4:1	DESIGN UNITS METRIC	THIRD ANGLE PROJECTION
	▽=0	4 PLACES ± --- ± ---	mm INCH	DRAWN BY AG DATE 1989/02/06	TITLE 2.5MM I.D.T. CONNECTOR ASSEMBLY	
	▽=0	3 PLACES ± --- ± .010		CHECKED BY RE DATE 1989/02/06	MOLEX INCORPORATED	
		2 PLACES ± 0.25 ± .014		APPROVED BY WRL DATE 1989/02/06	MATERIAL NO. SDA-42219-x	DOCUMENT NO.
		1 PLACE ± 0.36 ± ---		DRAFT WHERE APPLICABLE MUST REMAIN WITHIN DIMENSIONS		
		ANGULAR ± 1/2°		SEE CHART		
				THIS DRAWING CONTAINS INFORMATION THAT IS PROPRIETARY TO MOLEX INCORPORATED AND SHOULD NOT BE USED WITHOUT WRITTEN PERMISSION		

13		12		11		10		9		8		7		6		5		4		3		2		1	
A-422 19-NA				A-422 19-NA-R				A-422 19-NB				A-422 19-NC				A-422 19-ND				A-422 19-NE					
PART NO.	ENG. NO.	PART NO.	ENG. NO.	PART NO.	ENG. NO.	PART NO.	ENG. NO.	PART NO.	ENG. NO.	PART NO.	ENG. NO.	PART NO.	ENG. NO.	PART NO.	ENG. NO.	PART NO.	ENG. NO.	PART NO.	ENG. NO.	PART NO.	ENG. NO.	PART NO.	ENG. NO.	PART NO.	ENG. NO.
22-43-3020	A-422 19-2A		A-422 19-2A-R	22-44-6026	A-422 19-2B				A-422 19-2C	22-44-6022	A-422 19-2D	22-44-6024	A-422 19-2E												
22-43-3030	A-422 19-3A		A-422 19-3A-R	22-44-6036	A-422 19-3B				A-422 19-3C	22-44-6032	A-422 19-3D	22-44-6034	A-422 19-3E												
22-43-3040	A-422 19-4A		A-422 19-4A-R	22-44-6046	A-422 19-4B				A-422 19-4C	22-44-6042	A-422 19-4D	22-44-6044	A-422 19-4E												
22-43-3050	A-422 19-5A		A-422 19-5A-R	22-44-6056	A-422 19-5B				A-422 19-5C	22-44-6052	A-422 19-5D	22-44-6054	A-422 19-5E												
22-43-3060	A-422 19-6A		A-422 19-6A-R		A-422 19-6B				A-422 19-6C	22-44-6062	A-422 19-6D	22-44-6064	A-422 19-6E												
22-43-3070	A-422 19-7A		A-422 19-7A-R		A-422 19-7B				A-422 19-7C	22-44-6072	A-422 19-7D	22-44-6074	A-422 19-7E												
22-43-3080	A-422 19-8A		A-422 19-8A-R		A-422 19-8B				A-422 19-8C	22-44-6082	A-422 19-8D	22-44-6084	A-422 19-8E												
22-43-3090	A-422 19-9A		A-422 19-9A-R		A-422 19-9B				A-422 19-9C	22-44-6092	A-422 19-9D	22-44-6094	A-422 19-9E												
22-43-3100	A-422 19-10A		A-422 19-10A-R		A-422 19-10B				A-422 19-10C	22-44-6102	A-422 19-10D	22-44-6104	A-422 19-10E												
22-43-3110	A-422 19-11A		A-422 19-11A-R		A-422 19-11B				A-422 19-11C		A-422 19-11D		A-422 19-11E												
22-43-3120	A-422 19-12A		A-422 19-12A-R		A-422 19-12B				A-422 19-12C	22-44-6122	A-422 19-12D		A-422 19-12E												
22-43-3130	A-422 19-13A		A-422 19-13A-R		A-422 19-13B				A-422 19-13C		A-422 19-13D		A-422 19-13E												
22-43-3140	A-422 19-14A		A-422 19-14A-R		A-422 19-14B				A-422 19-14C	22-44-6142	A-422 19-14D		A-422 19-14E												
22-43-3150	A-422 19-15A		A-422 19-15A-R		A-422 19-15B				A-422 19-15C		A-422 19-15D		A-422 19-15E												

A-422 19-NF		A-422 19-NG				A-422 19-NA-I		A-422 19-NH			
PART NO.	ENG. NO.	PART NO.	ENG. NO.	PART NO.	ENG. NO.	PART NO.	ENG. NO.	PART NO.	ENG. NO.	PART NO.	ENG. NO.
22-44-6021	A-422 19-2F	22-44-6023	A-422 19-2G			22-43-3022	A-422 19-2A-I		A-422 19-2H		
22-44-6031	A-422 19-3F	22-44-6033	A-422 19-3G			22-43-3032	A-422 19-3A-I		A-422 19-3H		
22-44-6041	A-422 19-4F	22-44-6043	A-422 19-4G			22-43-3042	A-422 19-4A-I		A-422 19-4H		
22-44-6051	A-422 19-5F	22-44-6053	A-422 19-5G			22-43-3052	A-422 19-5A-I		A-422 19-5H		
22-44-6061	A-422 19-6F	22-44-6063	A-422 19-6G			22-43-3062	A-422 19-6A-I		A-422 19-6H		
22-44-6071	A-422 19-7F	22-44-6073	A-422 19-7G			22-43-3072	A-422 19-7A-I		A-422 19-7H		
	A-422 19-8F	22-44-6083	A-422 19-8G			22-43-3082	A-422 19-8A-I		A-422 19-8H		
22-44-6091	A-422 19-9F	22-44-6093	A-422 19-9G			22-43-3092	A-422 19-9A-I		A-422 19-9H		
22-44-6101	A-422 19-10F	22-44-6103	A-422 19-10G			22-43-3102	A-422 19-10A-I		A-422 19-10H		
	A-422 19-11F	22-44-6113	A-422 19-11G			22-43-3112	A-422 19-11A-I		A-422 19-11H		
	A-422 19-12F	22-44-6123	A-422 19-12G			22-43-3122	A-422 19-12A-I		A-422 19-12H		
	A-422 19-13F	22-44-6133	A-422 19-13G			22-43-3132	A-422 19-13A-I		A-422 19-13H		
	A-422 19-14F	22-44-6143	A-422 19-14G			22-43-3142	A-422 19-14A-I		A-422 19-14H		
	A-422 19-15F	22-44-6153	A-422 19-15G			22-43-3152	A-422 19-15A-I		A-422 19-15H		

ADD 22-44-6122/6142 EC NO. LCP2007-1815 2007/01/26 DRAWN BY: DIER 2007/01/30 CHECKED BY: APPR:PS/TH 2007/02/01 REV. DESCRIPTION	QUALITY SYMBOLS	GENERAL TOLERANCES (UNLESS SPECIFIED)	DIMENSION STYLE IN/MM	SCALE ---	DESIGN UNITS METRIC	THIRD ANGLE PROJECTION
	▽=0	4 PLACES ± --- ± ---	mm INCH	DRAWN BY: SCHMIDGALL	DATE: 1991/05/17	TITLE: 2.5 MM I.D. CONNECTOR ASSEMBLY
	▽=0	3 PLACES ± --- ± ---		CHECKED BY: EDGLEY	DATE: 1991/05/17	
		2 PLACES ± --- ± ---		APPROVED BY: LENZ	DATE: 1991/05/17	MATERIAL NO. MOLEX INCORPORATED
	1 PLACE ± --- ± ---	ANGULAR ±1/2°				SHEET NO. 2 OF 3
		DRAFT WHERE APPLICABLE MUST REMAIN WITHIN DIMENSIONS	SEE CHART			
			SIZE C	THIS DRAWING CONTAINS INFORMATION THAT IS PROPRIETARY TO MOLEX INCORPORATED AND SHOULD NOT BE USED WITHOUT WRITTEN PERMISSION		

12		11		10		9		8		7		6		5		4		3		2		1	
----	--	----	--	----	--	---	--	---	--	---	--	---	--	---	--	---	--	---	--	---	--	---	--