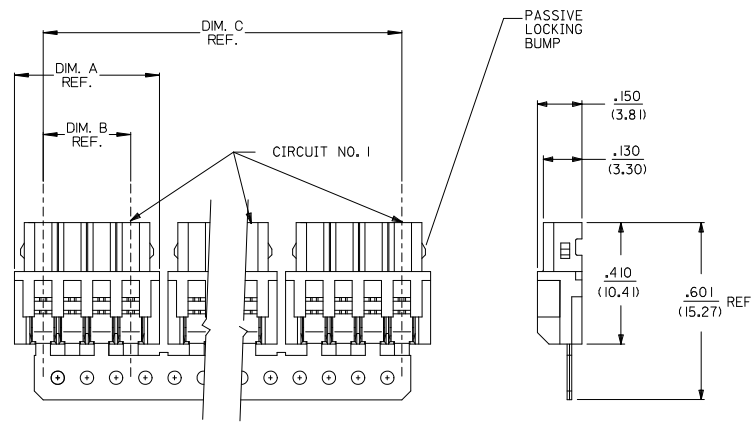


| DISCRETE CONN. CKT SIZE | NO OF CONN. IN CHAIN | DIM. A | DIM. B | DIM. C | PASSIVE LOCKING BUMPS |
|-------------------------|----------------------|------------------|------------------|------------------|-----------------------|
| 2 | 10 | .292 (7.42) | .098 (2.50) | 2.756 (70.00) | YES |
| 3 | 8 | .390 (9.92) | .197 (5.00) | 2.953 (75.00) | YES |
| 4 | 6 | .489 (12.42) | .295 (7.50) | 2.756 (70.00) | YES |
| 5 | 5 | .587 (14.92) | .394 (10.00) | 2.756 (70.00) | YES |
| 6 | 4 | .685 (17.40) | .492 (12.50) | 2.556 (65.00) | YES |
| 7 | 4 | .783 (19.90) | .591 (15.00) | 2.952 (75.00) | YES |
| 8 | 3 | .882 (22.40) | .689 (17.50) | 2.461 (62.50) | YES |
| 9 | 3 | .980 (24.90) | .787 (20.00) | 2.756 (70.00) | NO |
| 10 | 2 | 1.079 (27.40) | .886 (22.50) | 1.969 (50.00) | NO |
| 11 | 2 | 1.177 (29.90) | .984 (25.00) | 2.165 (55.00) | NO |
| 12 | 2 | 1.276 (32.40) | 1.082 (27.50) | 2.362 (60.00) | NO |
| 13 | 2 | 1.374 (34.90) | 1.181 (30.00) | 2.559 (65.00) | NO |
| 14 | 2 | 1.472 (37.40) | 1.279 (32.50) | 2.756 (70.00) | NO |
| 15 | 2 | 1.571 (39.90) | 1.378 (35.00) | 2.952 (75.00) | NO |



- NOTES:
- MATERIAL:
HOUSING: POLYESTER, 7.5% GLASS FILLED, 94V-0
TERMINAL: PHOS. BRONZE
 - FINISH:
(P909) *OVERALL HOT TIN DIP: .000100/0.00254 MIN.
*THE PRIMARY SHIPPING CARTON WILL BE LABELED "COMPLIANT TO RoHS DIRECTIVE 2002/95/EC AND ELV ANNEX II OF DIRECTIVE 2000/53/EC". CARTONS WITHOUT THIS LABEL MAY CONTAIN PRODUCT WITH TIN/LEAD PLATINGS.
 - FOR PRODUCT SPEC'S SEE PS-42219-0001
 - PACKAGING SPECIFICATION: SEE LENGEND
 - THE WIRE TERMINATION SPEC IS SMES-42219-0002.
 - THIS PART CONFORMS TO CLASS B REQUIREMENTS OF COSMETIC SPECIFICATION PS-45499-002.

42219-N***
NO OF CKTS
HOUSING COLOR
PACKAGING SPEC.
BLANK= PK-70873-0140 (LARGE BOX)
I= PK-40873-0061 (SMALL BOX)
TERMINAL
BLANK=42218

A= (NATURAL)
B= (BLUE)
C= (BROWN)
D= (RED)
E= (ORANGE)
F= (YELLOW)
G= (GREEN)
H= (GRAY)

| | |
|---|----|
| 3 | J1 |
| 2 | J1 |
| 1 | J1 |

| | | | | | | | | | | |
|--|-------------------------------|---------------------------------------|----|---|---------------------------------|--|---------------------|------------------------|--|--|
| UPDATE NOTES EC NO: UGP2007-1815 DRAWN BY: DIER 2007/01/26 CHECKED BY: CHYKADBER 2007/01/30 APPROVED BY: APPRI/SITH 2007/02/01 | QUALITY SYMBOLS ▽=0 ▽=0 | GENERAL TOLERANCES (UNLESS SPECIFIED) | | DIMENSION STYLE IN/MM | | SCALE 4:1 | DESIGN UNITS METRIC | THIRD ANGLE PROJECTION | | |
| | | 4 PLACES ± --- ± --- | mm | INCH | DRAWN BY AG DATE 1989/02/06 | TITLE 2.5MM I.D.T. CONNECTOR ASSEMBLY | | | | |
| | | 3 PLACES ± --- ± .010 | | | CHECKED BY RE DATE 1989/02/06 | MOLEX INCORPORATED | | | | |
| | | 2 PLACES ± 0.25 ± .014 | | | APPROVED BY WRL DATE 1989/02/06 | MATERIAL NO. SDA-42219-x DOCUMENT NO. SHEET NO. 1 OF 3 | | | | |
| DRAFT WHERE APPLICABLE MUST REMAIN WITHIN DIMENSIONS | | SEE CHART | | THIS DRAWING CONTAINS INFORMATION THAT IS PROPRIETARY TO MOLEX INCORPORATED AND SHOULD NOT BE USED WITHOUT WRITTEN PERMISSION | | | | | | |

| 13 | | 12 | | 11 | | 10 | | 9 | | 8 | | 7 | | 6 | | 5 | | 4 | | 3 | | 2 | | 1 | |
|-------------|--------------|----------|----------------|---------------|--------------|----------|----------|-------------|----------|--------------|------------|--------------|------------|--------------|----------|-------------|----------|----------|----------|-------------|----------|----------|----------|----------|----------|
| A-422 19-NA | | | | A-422 19-NA-R | | | | A-422 19-NB | | | | A-422 19-NC | | | | A-422 19-ND | | | | A-422 19-NE | | | | | |
| PART NO. | ENG. NO. | PART NO. | ENG. NO. | PART NO. | ENG. NO. | PART NO. | ENG. NO. | PART NO. | ENG. NO. | PART NO. | ENG. NO. | PART NO. | ENG. NO. | PART NO. | ENG. NO. | PART NO. | ENG. NO. | PART NO. | ENG. NO. | PART NO. | ENG. NO. | PART NO. | ENG. NO. | PART NO. | ENG. NO. |
| 22-43-3020 | A-422 19-2A | | A-422 19-2A-R | 22-44-6026 | A-422 19-2B | | | | | A-422 19-2C | 22-44-6022 | A-422 19-2D | 22-44-6024 | A-422 19-2E | | | | | | | | | | | |
| 22-43-3030 | A-422 19-3A | | A-422 19-3A-R | 22-44-6036 | A-422 19-3B | | | | | A-422 19-3C | 22-44-6032 | A-422 19-3D | 22-44-6034 | A-422 19-3E | | | | | | | | | | | |
| 22-43-3040 | A-422 19-4A | | A-422 19-4A-R | 22-44-6046 | A-422 19-4B | | | | | A-422 19-4C | 22-44-6042 | A-422 19-4D | 22-44-6044 | A-422 19-4E | | | | | | | | | | | |
| 22-43-3050 | A-422 19-5A | | A-422 19-5A-R | 22-44-6056 | A-422 19-5B | | | | | A-422 19-5C | 22-44-6052 | A-422 19-5D | 22-44-6054 | A-422 19-5E | | | | | | | | | | | |
| 22-43-3060 | A-422 19-6A | | A-422 19-6A-R | | A-422 19-6B | | | | | A-422 19-6C | 22-44-6062 | A-422 19-6D | 22-44-6064 | A-422 19-6E | | | | | | | | | | | |
| 22-43-3070 | A-422 19-7A | | A-422 19-7A-R | | A-422 19-7B | | | | | A-422 19-7C | 22-44-6072 | A-422 19-7D | 22-44-6074 | A-422 19-7E | | | | | | | | | | | |
| 22-43-3080 | A-422 19-8A | | A-422 19-8A-R | | A-422 19-8B | | | | | A-422 19-8C | 22-44-6082 | A-422 19-8D | 22-44-6084 | A-422 19-8E | | | | | | | | | | | |
| 22-43-3090 | A-422 19-9A | | A-422 19-9A-R | | A-422 19-9B | | | | | A-422 19-9C | 22-44-6092 | A-422 19-9D | 22-44-6094 | A-422 19-9E | | | | | | | | | | | |
| 22-43-3100 | A-422 19-10A | | A-422 19-10A-R | | A-422 19-10B | | | | | A-422 19-10C | 22-44-6102 | A-422 19-10D | 22-44-6104 | A-422 19-10E | | | | | | | | | | | |
| 22-43-3110 | A-422 19-11A | | A-422 19-11A-R | | A-422 19-11B | | | | | A-422 19-11C | | A-422 19-11D | | A-422 19-11E | | | | | | | | | | | |
| 22-43-3120 | A-422 19-12A | | A-422 19-12A-R | | A-422 19-12B | | | | | A-422 19-12C | 22-44-6122 | A-422 19-12D | | A-422 19-12E | | | | | | | | | | | |
| 22-43-3130 | A-422 19-13A | | A-422 19-13A-R | | A-422 19-13B | | | | | A-422 19-13C | | A-422 19-13D | | A-422 19-13E | | | | | | | | | | | |
| 22-43-3140 | A-422 19-14A | | A-422 19-14A-R | | A-422 19-14B | | | | | A-422 19-14C | 22-44-6142 | A-422 19-14D | | A-422 19-14E | | | | | | | | | | | |
| 22-43-3150 | A-422 19-15A | | A-422 19-15A-R | | A-422 19-15B | | | | | A-422 19-15C | | A-422 19-15D | | A-422 19-15E | | | | | | | | | | | |

| A-422 19-NF | | A-422 19-NG | | | | A-422 19-NA-I | | A-422 19-NH | | | |
|-------------|--------------|-------------|--------------|----------|----------|---------------|----------------|-------------|--------------|----------|----------|
| PART NO. | ENG. NO. | PART NO. | ENG. NO. | PART NO. | ENG. NO. | PART NO. | ENG. NO. | PART NO. | ENG. NO. | PART NO. | ENG. NO. |
| 22-44-6021 | A-422 19-2F | 22-44-6023 | A-422 19-2G | | | 22-43-3022 | A-422 19-2A-I | | A-422 19-2H | | |
| 22-44-6031 | A-422 19-3F | 22-44-6033 | A-422 19-3G | | | 22-43-3032 | A-422 19-3A-I | | A-422 19-3H | | |
| 22-44-6041 | A-422 19-4F | 22-44-6043 | A-422 19-4G | | | 22-43-3042 | A-422 19-4A-I | | A-422 19-4H | | |
| 22-44-6051 | A-422 19-5F | 22-44-6053 | A-422 19-5G | | | 22-43-3052 | A-422 19-5A-I | | A-422 19-5H | | |
| 22-44-6061 | A-422 19-6F | 22-44-6063 | A-422 19-6G | | | 22-43-3062 | A-422 19-6A-I | | A-422 19-6H | | |
| 22-44-6071 | A-422 19-7F | 22-44-6073 | A-422 19-7G | | | 22-43-3072 | A-422 19-7A-I | | A-422 19-7H | | |
| | A-422 19-8F | 22-44-6083 | A-422 19-8G | | | 22-43-3082 | A-422 19-8A-I | | A-422 19-8H | | |
| 22-44-6091 | A-422 19-9F | 22-44-6093 | A-422 19-9G | | | 22-43-3092 | A-422 19-9A-I | | A-422 19-9H | | |
| 22-44-6101 | A-422 19-10F | 22-44-6103 | A-422 19-10G | | | 22-43-3102 | A-422 19-10A-I | | A-422 19-10H | | |
| | A-422 19-11F | 22-44-6113 | A-422 19-11G | | | 22-43-3112 | A-422 19-11A-I | | A-422 19-11H | | |
| | A-422 19-12F | 22-44-6123 | A-422 19-12G | | | 22-43-3122 | A-422 19-12A-I | | A-422 19-12H | | |
| | A-422 19-13F | 22-44-6133 | A-422 19-13G | | | 22-43-3132 | A-422 19-13A-I | | A-422 19-13H | | |
| | A-422 19-14F | 22-44-6143 | A-422 19-14G | | | 22-43-3142 | A-422 19-14A-I | | A-422 19-14H | | |
| | A-422 19-15F | 22-44-6153 | A-422 19-15G | | | 22-43-3152 | A-422 19-15A-I | | A-422 19-15H | | |

| | | | | | | |
|--|---|--|--|--|---|--|
| ADD 22-44-6122/6142 EC NO. LCP2007-1815 2007/01/26 DRAWN BY: DIER 2007/01/30 CHECKED BY: APPR:PS/TH 2007/02/01 REV. DESCRIPTION | QUALITY SYMBOLS ▽=0 ▽=0 | GENERAL TOLERANCES (UNLESS SPECIFIED) mm INCH 4 PLACES ± --- ± --- 3 PLACES ± --- ± --- 2 PLACES ± --- ± --- 1 PLACE ± --- ± --- ANGULAR ±1/2° | DIMENSION STYLE IN/MM DRAWN BY: SCHMIDGALL DATE: 1991/05/17 CHECKED BY: EDGLEY DATE: 1991/05/17 APPROVED BY: LENZ DATE: 1991/05/17 | SCALE --- DESIGN UNITS METRIC THIRD ANGLE PROJECTION | TITLE 2.5 MM I.D. CONNECTOR ASSEMBLY | MATERIAL NO. SEE CHART DOCUMENT NO. SDA-42219-* SHEET NO. 2 OF 3 |
| | DRAFT WHERE APPLICABLE MUST REMAIN WITHIN DIMENSIONS THIS DRAWING CONTAINS INFORMATION THAT IS PROPRIETARY TO MOLEX INCORPORATED AND SHOULD NOT BE USED WITHOUT WRITTEN PERMISSION | | | | | |

| 12 | | 11 | | 10 | | 9 | | 8 | | 7 | | 6 | | 5 | | 4 | | 3 | | 2 | | 1 | |
|----|--|----|--|----|--|---|--|---|--|---|--|---|--|---|--|---|--|---|--|---|--|---|--|
|----|--|----|--|----|--|---|--|---|--|---|--|---|--|---|--|---|--|---|--|---|--|---|--|