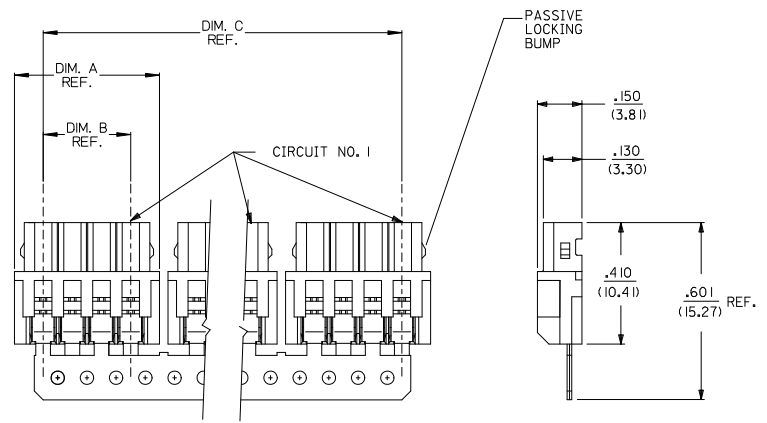


DISCRETE CONN. CKT SIZE	NO OF CONN. IN CHAIN	DIM. A	DIM. B	DIM. C	PASSIVE LOCKING BUMPS
2	10	.292 (7.42)	.098 (2.50)	2.756 (70.00)	YES
3	8	.390 (9.92)	.197 (5.00)	2.953 (75.00)	YES
4	6	.489 (12.42)	.295 (7.50)	2.756 (70.00)	YES
5	5	.587 (14.92)	.394 (10.00)	2.756 (70.00)	YES
6	4	.685 (17.40)	.492 (12.50)	2.556 (65.00)	YES
7	4	.783 (19.90)	.591 (15.00)	2.952 (75.00)	YES
8	3	.882 (22.40)	.689 (17.50)	2.461 (62.50)	YES
9	3	.980 (24.90)	.787 (20.00)	2.756 (70.00)	NO
10	2	1.079 (27.40)	.886 (22.50)	1.969 (50.00)	NO
11	2	1.177 (29.90)	.984 (25.00)	2.165 (55.00)	NO
12	2	1.276 (32.40)	1.082 (27.50)	2.362 (60.00)	NO
13	2	1.374 (34.90)	1.181 (30.00)	2.559 (65.00)	NO
14	2	1.472 (37.40)	1.279 (32.50)	2.756 (70.00)	NO
15	2	1.571 (39.90)	1.378 (35.00)	2.952 (75.00)	NO



NOTES:

- MATERIAL:
HOUSING: POLYESTER, 7.5% GLASS FILLED, 94V-0
TERMINAL: PHOS. BRONZE
- FINISH:
(P909) *OVERALL HOT TIN DIP: .000100/0.00254 MIN.
*THE PRIMARY SHIPPING CARTON WILL BE LABELED "COMPLIANT TO RoHS DIRECTIVE 2002/95/EC AND ELV ANNEX II OF DIRECTIVE 2000/53/EC". CARTONS WITHOUT THIS LABEL MAY CONTAIN PRODUCT WITH TIN/LEAD PLATINGS.
- FOR PRODUCT SPEC'S SEE PS-42219-0001
- PACKAGING SPECIFICATION: SEE LENGEND
- THE WIRE TERMINATION SPEC IS SMES-42219-0002.
- THIS PART CONFORMS TO CLASS B REQUIREMENTS OF COSMETIC SPECIFICATION PS-45499-002.

42219-N***
NO OF CKTS
HOUSING COLOR
PACKAGING SPEC.
BLANK= PK-70873-0140 (LARGE BOX)
I= PK-40873-0061 (SMALL BOX)
TERMINAL
BLANK=42218

A= (NATURAL)
B= (BLUE)
C= (BROWN)
D= (RED)
E= (ORANGE)
F= (YELLOW)
G= (GREEN)
H= (GRAY)

3	J1
2	J1
1	J1

UPDATE NOTES EC NO: UGP2007-1815 DRAWN BY: DNER 2007/01/26 CHECKED BY: CHYKADERR 2007/01/30 APPROVED BY: APPR:PSITH 2007/02/01	QUALITY SYMBOLS	GENERAL TOLERANCES (UNLESS SPECIFIED)	DIMENSION STYLE IN/MM	SCALE 4:1	DESIGN UNITS METRIC	THIRD ANGLE PROJECTION	
	$\nabla=0$ $\nabla=0$	4 PLACES ± --- ± --- 3 PLACES ± --- ± .010 2 PLACES ± 0.25 ± .014 1 PLACE ± 0.36 ± --- ANGULAR ± 1/2°	DRAWN BY: AG DATE: 1989/02/06 CHECKED BY: RE DATE: 1989/02/06 APPROVED BY: WRL DATE: 1989/02/06	TITLE	2.5MM I.D.T. CONNECTOR ASSEMBLY		
	DRAFT WHERE APPLICABLE MUST REMAIN WITHIN DIMENSIONS	SEE CHART	MATERIAL NO.	DOCUMENT NO.	SHEET NO. 1 OF 3		
			MOLEX INCORPORATED THIS DRAWING CONTAINS INFORMATION THAT IS PROPRIETARY TO MOLEX INCORPORATED AND SHOULD NOT BE USED WITHOUT WRITTEN PERMISSION				

13		12		11		10		9		8		7		6		5		4		3		2		1	
A-422 19-NA				A-422 19-NA-R				A-422 19-NB				A-422 19-NC				A-422 19-ND				A-422 19-NE					
PART NO.	ENG. NO.	PART NO.	ENG. NO.	PART NO.	ENG. NO.	PART NO.	ENG. NO.	PART NO.	ENG. NO.	PART NO.	ENG. NO.	PART NO.	ENG. NO.	PART NO.	ENG. NO.	PART NO.	ENG. NO.	PART NO.	ENG. NO.	PART NO.	ENG. NO.	PART NO.	ENG. NO.	PART NO.	ENG. NO.
22-43-3020	A-422 19-2A		A-422 19-2A-R	22-44-6026	A-422 19-2B					A-422 19-2C	22-44-6022	A-422 19-2D	22-44-6024	A-422 19-2E											
22-43-3030	A-422 19-3A		A-422 19-3A-R	22-44-6036	A-422 19-3B					A-422 19-3C	22-44-6032	A-422 19-3D	22-44-6034	A-422 19-3E											
22-43-3040	A-422 19-4A		A-422 19-4A-R	22-44-6046	A-422 19-4B					A-422 19-4C	22-44-6042	A-422 19-4D	22-44-6044	A-422 19-4E											
22-43-3050	A-422 19-5A		A-422 19-5A-R	22-44-6056	A-422 19-5B					A-422 19-5C	22-44-6052	A-422 19-5D	22-44-6054	A-422 19-5E											
22-43-3060	A-422 19-6A		A-422 19-6A-R		A-422 19-6B					A-422 19-6C	22-44-6062	A-422 19-6D	22-44-6064	A-422 19-6E											
22-43-3070	A-422 19-7A		A-422 19-7A-R		A-422 19-7B					A-422 19-7C	22-44-6072	A-422 19-7D	22-44-6074	A-422 19-7E											
22-43-3080	A-422 19-8A		A-422 19-8A-R		A-422 19-8B					A-422 19-8C	22-44-6082	A-422 19-8D	22-44-6084	A-422 19-8E											
22-43-3090	A-422 19-9A		A-422 19-9A-R		A-422 19-9B					A-422 19-9C	22-44-6092	A-422 19-9D	22-44-6094	A-422 19-9E											
22-43-3100	A-422 19-10A		A-422 19-10A-R		A-422 19-10B					A-422 19-10C	22-44-6102	A-422 19-10D	22-44-6104	A-422 19-10E											
22-43-3110	A-422 19-11A		A-422 19-11A-R		A-422 19-11B					A-422 19-11C		A-422 19-11D		A-422 19-11E											
22-43-3120	A-422 19-12A		A-422 19-12A-R		A-422 19-12B					A-422 19-12C	22-44-6122	A-422 19-12D		A-422 19-12E											
22-43-3130	A-422 19-13A		A-422 19-13A-R		A-422 19-13B					A-422 19-13C		A-422 19-13D		A-422 19-13E											
22-43-3140	A-422 19-14A		A-422 19-14A-R		A-422 19-14B					A-422 19-14C	22-44-6142	A-422 19-14D		A-422 19-14E											
22-43-3150	A-422 19-15A		A-422 19-15A-R		A-422 19-15B					A-422 19-15C		A-422 19-15D		A-422 19-15E											

A-422 19-NF		A-422 19-NG				A-422 19-NA-I		A-422 19-NH			
PART NO.	ENG. NO.	PART NO.	ENG. NO.	PART NO.	ENG. NO.	PART NO.	ENG. NO.	PART NO.	ENG. NO.	PART NO.	ENG. NO.
22-44-6021	A-422 19-2F	22-44-6023	A-422 19-2G			22-43-3022	A-422 19-2A-I		A-422 19-2H		
22-44-6031	A-422 19-3F	22-44-6033	A-422 19-3G			22-43-3032	A-422 19-3A-I		A-422 19-3H		
22-44-6041	A-422 19-4F	22-44-6043	A-422 19-4G			22-43-3042	A-422 19-4A-I		A-422 19-4H		
22-44-6051	A-422 19-5F	22-44-6053	A-422 19-5G			22-43-3052	A-422 19-5A-I		A-422 19-5H		
22-44-6061	A-422 19-6F	22-44-6063	A-422 19-6G			22-43-3062	A-422 19-6A-I		A-422 19-6H		
22-44-6071	A-422 19-7F	22-44-6073	A-422 19-7G			22-43-3072	A-422 19-7A-I		A-422 19-7H		
	A-422 19-8F	22-44-6083	A-422 19-8G			22-43-3082	A-422 19-8A-I		A-422 19-8H		
22-44-6091	A-422 19-9F	22-44-6093	A-422 19-9G			22-43-3092	A-422 19-9A-I		A-422 19-9H		
22-44-6101	A-422 19-10F	22-44-6103	A-422 19-10G			22-43-3102	A-422 19-10A-I		A-422 19-10H		
	A-422 19-11F	22-44-6113	A-422 19-11G			22-43-3112	A-422 19-11A-I		A-422 19-11H		
	A-422 19-12F	22-44-6123	A-422 19-12G			22-43-3122	A-422 19-12A-I		A-422 19-12H		
	A-422 19-13F	22-44-6133	A-422 19-13G			22-43-3132	A-422 19-13A-I		A-422 19-13H		
	A-422 19-14F	22-44-6143	A-422 19-14G			22-43-3142	A-422 19-14A-I		A-422 19-14H		
	A-422 19-15F	22-44-6153	A-422 19-15G			22-43-3152	A-422 19-15A-I		A-422 19-15H		

ADD 22-44-6122/6142 EC NO. LCP2007-1815 2007/04/26 DRAWN BY: DIER 2007/04/30 CHECKED BY: APPR:PS/TH 2007/02/01 REV:	QUALITY SYMBOLS 	GENERAL TOLERANCES (UNLESS SPECIFIED) <table border="1"> <tr> <th></th> <th>mm</th> <th>INCH</th> </tr> <tr> <td>4 PLACES</td> <td>± 0.10</td> <td>± 0.004</td> </tr> <tr> <td>3 PLACES</td> <td>± 0.15</td> <td>± 0.006</td> </tr> <tr> <td>2 PLACES</td> <td>± 0.20</td> <td>± 0.008</td> </tr> <tr> <td>1 PLACE</td> <td>± 0.30</td> <td>± 0.012</td> </tr> </table>		mm	INCH	4 PLACES	± 0.10	± 0.004	3 PLACES	± 0.15	± 0.006	2 PLACES	± 0.20	± 0.008	1 PLACE	± 0.30	± 0.012	DIMENSION STYLE IN/MM SCALE --- DESIGN UNITS METRIC THIRD ANGLE PROJECTION	DRAWN BY: SCHMIDGALL DATE: 1991/05/17 CHECKED BY: EDGLEY DATE: 1991/05/17 APPROVED BY: LENZ DATE: 1991/05/17	TITLE: 2.5 MM I.D. CONNECTOR ASSEMBLY MOLEX INCORPORATED DOCUMENT NO.: SDA-42219-* SHEET NO.: 2 OF 3
		mm	INCH																	
	4 PLACES	± 0.10	± 0.004																	
	3 PLACES	± 0.15	± 0.006																	
2 PLACES	± 0.20	± 0.008																		
1 PLACE	± 0.30	± 0.012																		
DRAFT WHERE APPLICABLE MUST REMAIN WITHIN DIMENSIONS		SEE CHART	THIS DRAWING CONTAINS INFORMATION THAT IS PROPRIETARY TO MOLEX INCORPORATED AND SHOULD NOT BE USED WITHOUT WRITTEN PERMISSION																	

12		11		10		9		8		7		6		5		4		3		2		1	
----	--	----	--	----	--	---	--	---	--	---	--	---	--	---	--	---	--	---	--	---	--	---	--