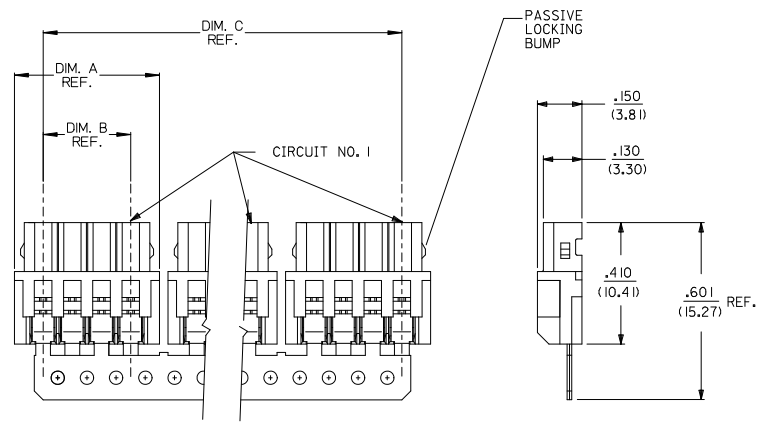


| DISCRETE CONN. CKT SIZE | NO OF CONN. IN CHAIN | DIM. A           | DIM. B           | DIM. C           | PASSIVE LOCKING BUMPS |
|-------------------------|----------------------|------------------|------------------|------------------|-----------------------|
| 2                       | 10                   | .292<br>(7.42)   | .098<br>(2.50)   | 2.756<br>(70.00) | YES                   |
| 3                       | 8                    | .390<br>(9.92)   | .197<br>(5.00)   | 2.953<br>(75.00) | YES                   |
| 4                       | 6                    | .489<br>(12.42)  | .295<br>(7.50)   | 2.756<br>(70.00) | YES                   |
| 5                       | 5                    | .587<br>(14.92)  | .394<br>(10.00)  | 2.756<br>(70.00) | YES                   |
| 6                       | 4                    | .685<br>(17.40)  | .492<br>(12.50)  | 2.556<br>(65.00) | YES                   |
| 7                       | 4                    | .783<br>(19.90)  | .591<br>(15.00)  | 2.952<br>(75.00) | YES                   |
| 8                       | 3                    | .882<br>(22.40)  | .689<br>(17.50)  | 2.461<br>(62.50) | YES                   |
| 9                       | 3                    | .980<br>(24.90)  | .787<br>(20.00)  | 2.756<br>(70.00) | NO                    |
| 10                      | 2                    | 1.079<br>(27.40) | .886<br>(22.50)  | 1.969<br>(50.00) | NO                    |
| 11                      | 2                    | 1.177<br>(29.90) | .984<br>(25.00)  | 2.165<br>(55.00) | NO                    |
| 12                      | 2                    | 1.276<br>(32.40) | 1.082<br>(27.50) | 2.362<br>(60.00) | NO                    |
| 13                      | 2                    | 1.374<br>(34.90) | 1.181<br>(30.00) | 2.559<br>(65.00) | NO                    |
| 14                      | 2                    | 1.472<br>(37.40) | 1.279<br>(32.50) | 2.756<br>(70.00) | NO                    |
| 15                      | 2                    | 1.571<br>(39.90) | 1.378<br>(35.00) | 2.952<br>(75.00) | NO                    |



NOTES:

- MATERIAL:  
HOUSING: POLYESTER, 7.5% GLASS FILLED, 94V-0  
TERMINAL: PHOS. BRONZE
- FINISH:  
(P909) \*OVERALL HOT TIN DIP: .000100/0.00254 MIN.  
\*THE PRIMARY SHIPPING CARTON WILL BE LABELED "COMPLIANT TO RoHS DIRECTIVE 2002/95/EC AND ELV ANNEX II OF DIRECTIVE 2000/53/EC". CARTONS WITHOUT THIS LABEL MAY CONTAIN PRODUCT WITH TIN/LEAD PLATINGS.
- FOR PRODUCT SPEC'S SEE PS-42219-0001
- PACKAGING SPECIFICATION: SEE LENGEND
- THE WIRE TERMINATION SPEC IS SMES-42219-0002.
- THIS PART CONFORMS TO CLASS B REQUIREMENTS OF COSMETIC SPECIFICATION PS-45499-002.

- 42219-N\*\*\*
- NO OF CKTS
- HOUSING COLOR
- PACKAGING SPEC.  
BLANK= PK-70873-0140 (LARGE BOX)  
I= PK-40873-0061 (SMALL BOX)
- TERMINAL  
BLANK=42218
- A= (NATURAL)  
B= (BLUE)  
C= (BROWN)  
D= (RED)  
E= (ORANGE)  
F= (YELLOW)  
G= (GREEN)  
H= (GRAY)

|   |    |
|---|----|
| 3 | J1 |
| 2 | J1 |
| 1 | J1 |

|  |                               |                                       |    |  |                                    |  |                     |                        |  |
|--|-------------------------------|---------------------------------------|----|--|------------------------------------|--|---------------------|------------------------|--|
| UPDATE NOTES<br>EC NO: UGP2007-1815<br>DRAWN BY: DIER 2007/01/26<br>CHECKED BY: CHYKADERR 2007/01/30<br>APPROVED BY: APPR:PSITH 2007/02/01 | QUALITY SYMBOLS<br>▽=0<br>▽=0 | GENERAL TOLERANCES (UNLESS SPECIFIED) |    | DIMENSION STYLE IN/MM                    |                                    | SCALE 4:1                                | DESIGN UNITS METRIC | THIRD ANGLE PROJECTION |  |
|  |                               | 4 PLACES ± --- ± ---                  | mm | INCH                                     | DRAWN BY AG<br>DATE 1989/02/06     | TITLE 2.5MM I.D.T. CONNECTOR ASSEMBLY    |                     |                        |  |
|  |                               | 3 PLACES ± --- ± .010                 |    |  | CHECKED BY RE<br>DATE 1989/02/06   | MOLEX INCORPORATED                       |                     |                        |  |
|  |                               | 2 PLACES ± 0.25 ± .014                |    |  | APPROVED BY WRL<br>DATE 1989/02/06 | MATERIAL NO. SDA-42219-*<br>DOCUMENT NO. |                     |                        |  |
| DRAFT WHERE APPLICABLE MUST REMAIN WITHIN DIMENSIONS   |                               | SEE CHART                             |    | MATERIAL NO. SDA-42219-*<br>DOCUMENT NO. |                                    | SHEET NO. 1 OF 3                         |                     |                        |  |

| 13          |              | 12       |                | 11            |              | 10       |          | 9           |          | 8            |            | 7            |            | 6            |          | 5           |          | 4        |          | 3           |          | 2        |          | 1        |          |
|-------------|--------------|----------|----------------|---------------|--------------|----------|----------|-------------|----------|--------------|------------|--------------|------------|--------------|----------|-------------|----------|----------|----------|-------------|----------|----------|----------|----------|----------|
| A-422 19-NA |              |          |                | A-422 19-NA-R |              |          |          | A-422 19-NB |          |              |            | A-422 19-NC  |            |              |          | A-422 19-ND |          |          |          | A-422 19-NE |          |          |          |          |          |
| PART NO.    | ENG. NO.     | PART NO. | ENG. NO.       | PART NO.      | ENG. NO.     | PART NO. | ENG. NO. | PART NO.    | ENG. NO. | PART NO.     | ENG. NO.   | PART NO.     | ENG. NO.   | PART NO.     | ENG. NO. | PART NO.    | ENG. NO. | PART NO. | ENG. NO. | PART NO.    | ENG. NO. | PART NO. | ENG. NO. | PART NO. | ENG. NO. |
| 22-43-3020  | A-422 19-2A  |          | A-422 19-2A-R  | 22-44-6026    | A-422 19-2B  |          |          |             |          | A-422 19-2C  | 22-44-6022 | A-422 19-2D  | 22-44-6024 | A-422 19-2E  |          |             |          |          |          |             |          |          |          |          |          |
| 22-43-3030  | A-422 19-3A  |          | A-422 19-3A-R  | 22-44-6036    | A-422 19-3B  |          |          |             |          | A-422 19-3C  | 22-44-6032 | A-422 19-3D  | 22-44-6034 | A-422 19-3E  |          |             |          |          |          |             |          |          |          |          |          |
| 22-43-3040  | A-422 19-4A  |          | A-422 19-4A-R  | 22-44-6046    | A-422 19-4B  |          |          |             |          | A-422 19-4C  | 22-44-6042 | A-422 19-4D  | 22-44-6044 | A-422 19-4E  |          |             |          |          |          |             |          |          |          |          |          |
| 22-43-3050  | A-422 19-5A  |          | A-422 19-5A-R  | 22-44-6056    | A-422 19-5B  |          |          |             |          | A-422 19-5C  | 22-44-6052 | A-422 19-5D  | 22-44-6054 | A-422 19-5E  |          |             |          |          |          |             |          |          |          |          |          |
| 22-43-3060  | A-422 19-6A  |          | A-422 19-6A-R  |               | A-422 19-6B  |          |          |             |          | A-422 19-6C  | 22-44-6062 | A-422 19-6D  | 22-44-6064 | A-422 19-6E  |          |             |          |          |          |             |          |          |          |          |          |
| 22-43-3070  | A-422 19-7A  |          | A-422 19-7A-R  |               | A-422 19-7B  |          |          |             |          | A-422 19-7C  | 22-44-6072 | A-422 19-7D  | 22-44-6074 | A-422 19-7E  |          |             |          |          |          |             |          |          |          |          |          |
| 22-43-3080  | A-422 19-8A  |          | A-422 19-8A-R  |               | A-422 19-8B  |          |          |             |          | A-422 19-8C  | 22-44-6082 | A-422 19-8D  | 22-44-6084 | A-422 19-8E  |          |             |          |          |          |             |          |          |          |          |          |
| 22-43-3090  | A-422 19-9A  |          | A-422 19-9A-R  |               | A-422 19-9B  |          |          |             |          | A-422 19-9C  | 22-44-6092 | A-422 19-9D  | 22-44-6094 | A-422 19-9E  |          |             |          |          |          |             |          |          |          |          |          |
| 22-43-3100  | A-422 19-10A |          | A-422 19-10A-R |               | A-422 19-10B |          |          |             |          | A-422 19-10C | 22-44-6102 | A-422 19-10D | 22-44-6104 | A-422 19-10E |          |             |          |          |          |             |          |          |          |          |          |
| 22-43-3110  | A-422 19-11A |          | A-422 19-11A-R |               | A-422 19-11B |          |          |             |          | A-422 19-11C |            | A-422 19-11D |            | A-422 19-11E |          |             |          |          |          |             |          |          |          |          |          |
| 22-43-3120  | A-422 19-12A |          | A-422 19-12A-R |               | A-422 19-12B |          |          |             |          | A-422 19-12C | 22-44-6122 | A-422 19-12D |            | A-422 19-12E |          |             |          |          |          |             |          |          |          |          |          |
| 22-43-3130  | A-422 19-13A |          | A-422 19-13A-R |               | A-422 19-13B |          |          |             |          | A-422 19-13C |            | A-422 19-13D |            | A-422 19-13E |          |             |          |          |          |             |          |          |          |          |          |
| 22-43-3140  | A-422 19-14A |          | A-422 19-14A-R |               | A-422 19-14B |          |          |             |          | A-422 19-14C | 22-44-6142 | A-422 19-14D |            | A-422 19-14E |          |             |          |          |          |             |          |          |          |          |          |
| 22-43-3150  | A-422 19-15A |          | A-422 19-15A-R |               | A-422 19-15B |          |          |             |          | A-422 19-15C |            | A-422 19-15D |            | A-422 19-15E |          |             |          |          |          |             |          |          |          |          |          |

| A-422 19-NF |              | A-422 19-NG |              |          |          | A-422 19-NA-I |                | A-422 19-NH |              |          |          |
|-------------|--------------|-------------|--------------|----------|----------|---------------|----------------|-------------|--------------|----------|----------|
| PART NO.    | ENG. NO.     | PART NO.    | ENG. NO.     | PART NO. | ENG. NO. | PART NO.      | ENG. NO.       | PART NO.    | ENG. NO.     | PART NO. | ENG. NO. |
| 22-44-6021  | A-422 19-2F  | 22-44-6023  | A-422 19-2G  |          |          | 22-43-3022    | A-422 19-2A-I  |             | A-422 19-2H  |          |          |
| 22-44-6031  | A-422 19-3F  | 22-44-6033  | A-422 19-3G  |          |          | 22-43-3032    | A-422 19-3A-I  |             | A-422 19-3H  |          |          |
| 22-44-6041  | A-422 19-4F  | 22-44-6043  | A-422 19-4G  |          |          | 22-43-3042    | A-422 19-4A-I  |             | A-422 19-4H  |          |          |
| 22-44-6051  | A-422 19-5F  | 22-44-6053  | A-422 19-5G  |          |          | 22-43-3052    | A-422 19-5A-I  |             | A-422 19-5H  |          |          |
| 22-44-6061  | A-422 19-6F  | 22-44-6063  | A-422 19-6G  |          |          | 22-43-3062    | A-422 19-6A-I  |             | A-422 19-6H  |          |          |
| 22-44-6071  | A-422 19-7F  | 22-44-6073  | A-422 19-7G  |          |          | 22-43-3072    | A-422 19-7A-I  |             | A-422 19-7H  |          |          |
|             | A-422 19-8F  | 22-44-6083  | A-422 19-8G  |          |          | 22-43-3082    | A-422 19-8A-I  |             | A-422 19-8H  |          |          |
| 22-44-6091  | A-422 19-9F  | 22-44-6093  | A-422 19-9G  |          |          | 22-43-3092    | A-422 19-9A-I  |             | A-422 19-9H  |          |          |
| 22-44-6101  | A-422 19-10F | 22-44-6103  | A-422 19-10G |          |          | 22-43-3102    | A-422 19-10A-I |             | A-422 19-10H |          |          |
|             | A-422 19-11F | 22-44-6113  | A-422 19-11G |          |          | 22-43-3112    | A-422 19-11A-I |             | A-422 19-11H |          |          |
|             | A-422 19-12F | 22-44-6123  | A-422 19-12G |          |          | 22-43-3122    | A-422 19-12A-I |             | A-422 19-12H |          |          |
|             | A-422 19-13F | 22-44-6133  | A-422 19-13G |          |          | 22-43-3132    | A-422 19-13A-I |             | A-422 19-13H |          |          |
|             | A-422 19-14F | 22-44-6143  | A-422 19-14G |          |          | 22-43-3142    | A-422 19-14A-I |             | A-422 19-14H |          |          |
|             | A-422 19-15F | 22-44-6153  | A-422 19-15G |          |          | 22-43-3152    | A-422 19-15A-I |             | A-422 19-15H |          |          |

| ADD 22-44-6122/6142<br>EC NO. LCP2007-1815<br>2007/01/26<br>DRAWN BY: DIER<br>2007/01/30<br>CHECKED BY: APPR:PS/TH<br>2007/02/01<br>REV: | QUALITY SYMBOLS<br> | GENERAL TOLERANCES (UNLESS SPECIFIED)<br><table border="1"> <tr> <th></th> <th>mm</th> <th>INCH</th> </tr> <tr> <td>4 PLACES</td> <td>± 0.10</td> <td>± 0.004</td> </tr> <tr> <td>3 PLACES</td> <td>± 0.15</td> <td>± 0.006</td> </tr> <tr> <td>2 PLACES</td> <td>± 0.20</td> <td>± 0.008</td> </tr> <tr> <td>1 PLACE</td> <td>± 0.30</td> <td>± 0.012</td> </tr> </table> |      | mm | INCH | 4 PLACES | ± 0.10 | ± 0.004 | 3 PLACES | ± 0.15 | ± 0.006 | 2 PLACES | ± 0.20 | ± 0.008 | 1 PLACE | ± 0.30 | ± 0.012 | DIMENSION STYLE<br>IN/MM<br>DRAWN BY: SCHMIDGALL<br>DATE: 1991/05/17<br>CHECKED BY: EDGLEY<br>DATE: 1991/05/17<br>APPROVED BY: LENZ<br>DATE: 1991/05/17<br>MATERIAL NO.: SEE CHART<br>DOCUMENT NO.: SDA-42219-*<br>SHEET NO.: 2 OF 3 | SCALE: ---<br>DESIGN UNITS: METRIC<br>THIRD ANGLE PROJECTION | TITLE: 2.5 MM I.D. CONNECTOR ASSEMBLY<br>MOLEX INCORPORATED |
|--|---------------------|--|------|----|------|----------|--------|---------|----------|--------|---------|----------|--------|---------|---------|--------|---------|--|--|---|
|  |                     | mm   | INCH |    |      |          |        |         |          |        |         |          |        |         |         |        |         |  |  |   |
| 4 PLACES   | ± 0.10              | ± 0.004  |      |    |      |          |        |         |          |        |         |          |        |         |         |        |         |  |  |   |
| 3 PLACES   | ± 0.15              | ± 0.006  |      |    |      |          |        |         |          |        |         |          |        |         |         |        |         |  |  |   |
| 2 PLACES   | ± 0.20              | ± 0.008  |      |    |      |          |        |         |          |        |         |          |        |         |         |        |         |  |  |   |
| 1 PLACE  | ± 0.30              | ± 0.012  |      |    |      |          |        |         |          |        |         |          |        |         |         |        |         |  |  |   |
| DRAFT WHERE APPLICABLE MUST REMAIN WITHIN DIMENSIONS   |                     | THIS DRAWING CONTAINS INFORMATION THAT IS PROPRIETARY TO MOLEX INCORPORATED AND SHOULD NOT BE USED WITHOUT WRITTEN PERMISSION  |      |    |      |          |        |         |          |        |         |          |        |         |         |        |         |  |  |   |