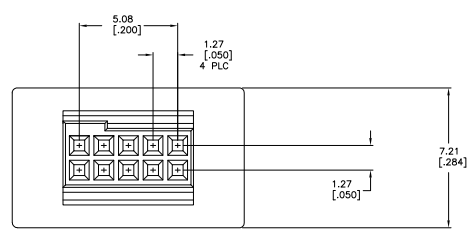
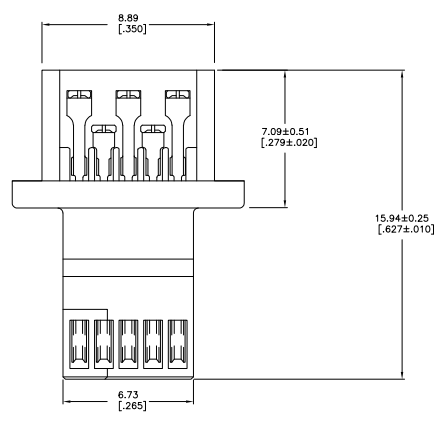
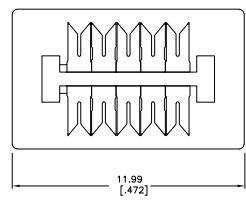
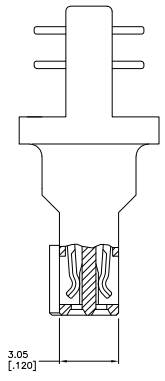


REV	DATE	DESCRIPTION	BY	CHK	APP
AD	00				
C	EC 023C 0248 05				



- △ MATERIAL:  
 RECEPTACLE CONTACTS- PHOSPHOR BRONZE  
 RECEPTACLE HOUSING: LCP; BLACK  
 TERMINATING COVERS: NONE.△
- △ PLATING:  
 RECEPTACLE CONTACTS- 0.00076 [0.00030] MINIMUM GOLD PLATE IN CONTACT AREA,  
 0.00127 [0.00050] MINIMUM BRIGHT TIN-LEAD PLATE IN TERMINATION AREA,  
 ALL OVER 0.00127 [0.00050] MINIMUM NICKEL.
- 3. RECOMMENDED WIRE:  
 28 AWG- 0.91 [036] MAX O.D. PVC OR POLYETHYLENE INSULATION.
- 4. SHORT-LONG CONTACT SEQUENCE MUST ALTERNATE BUT MAY BEGIN WITH EITHER  
 A SHORT OR LONG CONTACT.
- △ THIS CONNECTOR ASSEMBLY WAS ORIGINALLY DESIGNED TO BE USED WITH AN APPROPRIATE TERMINATING  
 COVER, WHICH WAS DESIGNED TO PROPERLY POSITION THE CABLE ON THE INSULATION DISPLACEMENT  
 CONTACTS PRIOR TO AND DURING TERMINATION. BECAUSE CUSTOMER DOES NOT INTEND TO USE SUCH COVER,  
 CUSTOMER MUST PROVIDE ADEQUATE ALTERNATIVE MEANS TO PROPERLY POSITION THE CABLE PRIOR TO AND  
 DURING TERMINATION.
- △ PLATING: RECEPTACLE CONTACTS-0.00076 (.00030) MINIMUM GOLD PLATE IN CONTACT AREA,  
 0.00127 (.00050) MINIMUM TIN PLATE IN TERMINATION AREA, ALL OVER 0.00127 (.00050)  
 MINIMUM NICKEL.
- △ ROHS 2002/95/EC COMPLIANT.



△ 5-111672-1
△ 111672-1
PART NUMBER

THIS DRAWING IS A CONTROLLED DOCUMENT.		DATE REVISIONS: 17 JAN 97	BY: [Signature]	DATE: 17 JAN 97	BY: [Signature]
DRAWING NO: 108-1443		DATE: 108-1443	BY: [Signature]	DATE: 108-1443	BY: [Signature]
REV: 114-7010		DATE: 114-7010	BY: [Signature]	DATE: 114-7010	BY: [Signature]
CUSTOMER DRAWING		DATE: 10-11	BY: [Signature]	DATE: 10-11	BY: [Signature]