

4

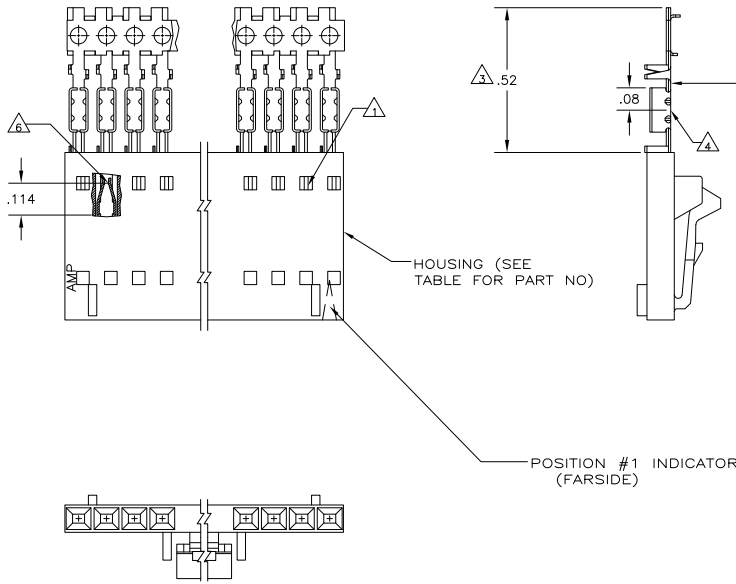
3

2

1

THIS DRAWING IS UNPUBLISHED. RELEASED FOR PUBLICATION BY TYCO ELECTRONICS CORPORATION. ALL RIGHTS RESERVED.

LOC	DIST	REVISIONS					
AD	00	P	LTR	DESCRIPTION	DATE	BY	APPD
		T		EC DEC 0734 04	17DEC04	BSV	JLG
		T1		REVISED PER ECO-09-020932	25AUG09	KK	AEG



CONTACT IDENTIFICATION LETTER "A" (LOCATED IN THIS AREA)

REVISION	DATE	BY	APPD
2-104257-4	25		7-103640-4
2-104257-3	24		7-103640-3
2-104257-2	23		7-103640-2
2-104257-1	22		7-103640-1
2-104257-0	21		7-103640-0
1-104257-9	20		6-103640-9
1-104257-8	19		6-103640-8
1-104257-7	18		6-103640-7
1-104257-6	17		6-103640-6
1-104257-5	16		6-103640-5
1-104257-4	15		6-103640-4
1-104257-3	14		6-103640-3
1-104257-2	13		6-103640-2
2-104257-4	25		2-103640-4
2-104257-3	24		2-103640-3
2-104257-2	23		2-103640-2
2-104257-1	22		2-103640-1
2-104257-0	21		2-103640-0
1-104257-9	20		1-103640-9
1-104257-8	19		1-103640-8
1-104257-7	18		1-103640-7
1-104257-6	17		1-103640-6
1-104257-5	16		1-103640-5
1-104257-4	15		1-103640-4
1-104257-3	14		1-103640-3
1-104257-2	13		1-103640-2
1-104257-1	12		1-103640-1
1-104257-0	11		1-103640-0
104257-9	10		103640-9
104257-8	9		103640-8
104257-7	8		103640-7
104257-6	7		103640-6
104257-5	6		103640-5
104257-4	5		103640-4
104257-3	4		103640-3
104257-2	3		103640-2
104257-1	2		103640-1

- 1 CONTACTS ARE LATCHED INTO THE PRELOAD STOP
- 2 USE WITH #26-#30 AWG WIRE SIZE, .054/.030 INSULATION DIAMETER, .015 MAXIMUM INSULATION THICKNESS
- 3 THE DIMENSION APPLIES WITH THE FORWARD PRELOAD STOP IN CONTACT WITH THE HOUSING SURFACE
- 4 POINT OF MEASUREMENT FOR PLATING THICKNESS
- 5 FOR STRIP ASSEMBLIES SEE PART NUMBER 103960
- 6 POINT OF MEASUREMENT FOR PLATING THICKNESS (INSIDE BEAMS)
- 7 CONTACTS: .000015 GOLD IN THE CONTACT AREA, .000050-.000100 BRIGHT TIN-LEAD ON THE TERMINATION AREA, ALL OVER .000050 NICKEL
- 8 CONTACTS: .000015 GOLD IN THE CONTACT AREA, .000050-.000100 MATTE TIN ON THE TERMINATION AREA, ALL OVER .000050 NICKEL
- 9 OBSOLETE PARTS: OBSOLETE CIS STREAMLINING PER D.RENAUD/D.SINISI

THIS DRAWING IS A CONTROLLED DOCUMENT.

INCHES: 0 PLC 2 - 103960-9, 104257-9, 104257-8, 104257-7, 104257-6, 104257-5, 104257-4, 104257-3, 104257-2, 104257-1

MATERIAL: HOUSING-PLATE, CONTACTS- PHOS BRONZE

FINISH: SEE TABLE

DATE: 11-4-06, 11-12-06, 11-12-06

BY: L.A. MAYER, P. de Jong, P. de Jong

PRODUCT SPEC: 108-25034

APPLICATION SPEC: 114-25026

RIGHT: CUSTOMER DRAWING

TYCO ELECTRONICS CORPORATION, Harrisburg, PA 17105-3608

RCPT ASSY, AMPMODU MTE, SINGLE, LATCHED & POLARIZED, FOR #26-#30 AWG WIRE SIZE

SIZE: A2, CASE CODE (DRAWING NO): 00779, C=103640

RESTRICTED TO: -

SCALE: 4:1, SHEET: 1 of 1, REV: T1

AMP 1471-9 REV 31MM2000

103640

A