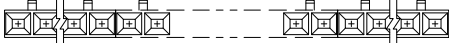
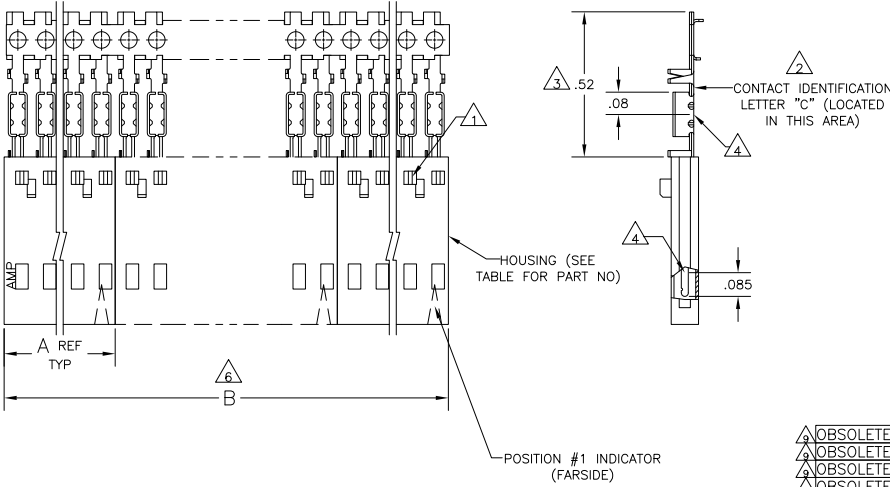


THIS DRAWING IS UNPUBLISHED. RELEASED FOR PUBLICATION
 © COPYRIGHT BY TYCO ELECTRONICS CORPORATION. ALL RIGHTS RESERVED.

LOC	DIST	REVISIONS					
AD	00	P	LR	DESCRIPTION	DATE	BY	APPD
		J		EC 063C 0771 04	29DEC04	BSV	JLG
		J1		REVISED PER ECO-09-020689	01SEP09	KK	AEG



- 1 CONTACTS ARE LATCHED INTO THE PRELOAD WINDOWS
- 2 USE WITH #26-#30 AWG WIRE SIZE, .054/.030 INSULATION DIAMETER, .015 MAXIMUM INSULATION THICKNESS
- 3 THE DIMENSION APPLIES WITH THE FORWARD PRELOAD STOP IN CONTACT WITH THE HOUSING SURFACE
- 4 POINT OF MEASUREMENT FOR PLATING THICKNESS
- 5 FOR INDIVIDUAL ASSEMBLIES SEE PART NUMBER 103896
- 6 ASSEMBLIES ARE JOINED BY THE CARRIER STRIP. ORDER QUANTITY REFLECTS TOTAL NUMBER OF INDIVIDUAL ASSEMBLIES REQUIRED. SEE TABLE FOR NUMBER OF ASSEMBLIES PER STRIP.
- 7 PINS: .000030 GOLD IN THE CONTACT AREA, .000050-.000100 BRIGHT TIN-LEAD TERMINATION AREA, ALL OVER .000050 NICKEL.
- 8 PINS: .000030 GOLD IN THE CONTACT AREA, .000050-.000100 MATTE TIN TERMINATION AREA, ALL OVER .000050 NICKEL.
- 9 OBSOLETE PARTS: OBSOLETE CIS STREAMLINING PER D.RENAUD/D.SINISI

△ OBSOLETE	△	2	2.40	1.198	1-104503-1	12	6-103955-1
△ OBSOLETE	△	2	2.20	1.098	1-104503-0	11	6-103955-0
△ OBSOLETE	△	2	2.00	.998	104503-9	10	5-103955-9
△ OBSOLETE	△	2	1.80	.898	104503-8	9	5-103955-8
△ OBSOLETE	△	2	1.60	.798	104503-7	8	5-103955-7
△ OBSOLETE	△	2	1.40	.698	104503-6	7	5-103955-6
△ OBSOLETE	△	4	2.39	.598	104503-5	6	5-103955-5
△	△	4	1.99	.498	104503-4	5	5-103955-4
△	△	5	1.99	.398	104503-3	4	5-103955-3
△	△	5	1.49	.298	104503-2	3	5-103955-2
△	△	10	1.98	.198	104503-1	2	5-103955-1
△ OBSOLETE	△	2	2.40	1.198	1-104503-1	12	1-103955-1
△ OBSOLETE	△	2	2.20	1.098	1-104503-0	11	1-103955-0
△ OBSOLETE	△	2	2.00	.998	104503-9	10	103955-9
△ OBSOLETE	△	2	1.80	.898	104503-8	9	103955-8
△ OBSOLETE	△	2	1.60	.798	104503-7	8	103955-7
△ OBSOLETE	△	2	1.40	.698	104503-6	7	103955-6
△ OBSOLETE	△	4	2.39	.598	104503-5	6	103955-5
△ SUPERSEDED	△	4	1.99	.498	104503-4	5	103955-4
△ SUPERSEDED	△	5	1.99	.398	104503-3	4	103955-3
△ SUPERSEDED	△	5	1.49	.298	104503-2	3	103955-2
△ SUPERSEDED	△	10	1.98	.198	104503-1	2	103955-1

PLATING	△	B	A	HOUSING PART NUMBER	NO OF POSN	ASSEMBLY PART NUMBER ON STRIP
---------	---	---	---	---------------------	------------	-------------------------------

THIS DRAWING IS A CONTROLLED DOCUMENT.

DIMENSIONS: INCHES	DESIGNED BY: L. MAYER 11-8-86	DATE: 11-12-86	BY: P. C. DEYONG
OTHER PARTS NUMBER: 0 PLC # - ; 1 PLC # - ; 2 PLC # - ; 3 PLC # - ; 4 PLC # - ; ANGLES # -	PRODUCT SPEC: 108-25034	APPLICATION SPEC: 114-25026	RIGHT: -
MATERIAL: HOUSING: FINE MECHANICAL COPPER-BRASS; PINS: PINS BRASS	FINISH: SEE TABLE	CUSTOMER DRAWING	SCALE: 4:1

TYCO ELECTRONICS CORPORATION
 HARRISBURG, PA 17105-3608

PIN ASSEMBLY, AMPMODU MTE,
 SINGLE ROW, .100 C/L, WITH GUIDE RIBS, FOR
 #26-#30 AWG WIRE SIZE, STRIP FORM

SIZE: ONE CODE (FORMING NO)
 A2 00779 C=103955

RESTRICTED TO: -

SCALE: 4:1 SHEET 1 OF 1 REV J1

AMP 1471-9 REV 31MM2000

103955

A