

4

3

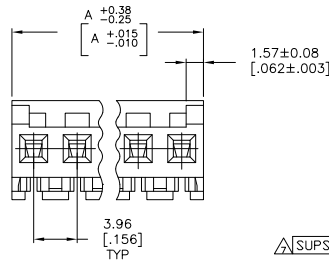
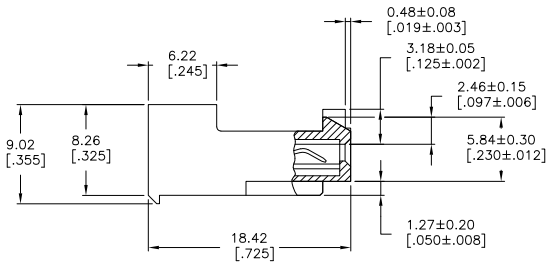
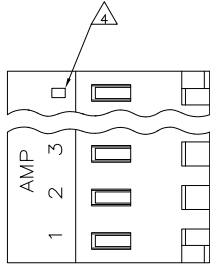
2

1

THIS DRAWING IS UNPUBLISHED. RELEASED FOR PUBLICATION
 BY TYCO ELECTRONICS CORPORATION. ALL RIGHTS RESERVED.

LOC	DIST	REVISIONS		
F	LNK	DESCRIPTION	DATE	BY
B		ECO-07-012872	15JUN07	KW DB
B1		REVISED PER ECO-10-000443	15JAN10	KK AEG

- △ MATERIAL: CONNECTOR - NYLON UL94V-2 (YELLOW).
 CONTACTS - 0.00076 [.000030] GOLD IN CONTACT AREA WITH BRIGHT TIN-LEAD FOR 644663-2 THRU 1-644663-2, MATTE WHISKER MITIGATED TIN FOR 3-644663-2 THRU 4-644663-2 OVER NICKEL UNDERPLATE.
- 2. CONTACTS ACCEPT 20 AWG WIRE WITH 2.41[.095] MAX INSULATION DIAMETER.
- 3. CONTACTS MUST ACCEPT 1.14±0.03[.045±.001] POST AND REMAIN LOCKED IN POSITION.
- △ IDENTIFICATION NUMBER FOR LAST CIRCUIT MAY NOT APPEAR ON ALL ASSEMBLIES.
- 5. DIMENSIONS IN BRACKETS ARE IN INCHES.
- 6. HOUSING FEATURES ARE: CLOSED END WITH LOCKING RAMP AND POLARIZING TAB.
- △ OBSOLETE PARTS: OBSOLETE CIS STREAMLINING PER D.RENAUD/D.SINISI



47.55	[1.872]	12	4-644663-2
43.59	[1.716]	11	4-644663-1
39.62	[1.560]	10	4-644663-0
35.66	[1.404]	9	3-644663-9
31.70	[1.248]	8	3-644663-8
27.74	[1.092]	7	3-644663-7
23.77	[.936]	6	3-644663-6
19.81	[.780]	5	3-644663-5
15.85	[.624]	4	3-644663-4
11.89	[.468]	3	3-644663-3
7.92	[.312]	2	3-644663-2
47.55	[1.872]	12	1-644663-2
43.59	[1.716]	11	1-644663-1
39.62	[1.560]	10	1-644663-0
35.66	[1.404]	9	644663-9
31.70	[1.248]	8	644663-8
27.74	[1.092]	7	644663-7
23.77	[.936]	6	644663-6
19.81	[.780]	5	644663-5
15.85	[.624]	4	644663-4
11.89	[.468]	3	644663-3
7.92	[.312]	2	644663-2
DIM A		NO OF CIRCUITS	PART NO

THIS DRAWING IS A CONTROLLED DOCUMENT.		DRN D. SOLOMON 09 JAN 92	Tyco Electronics Corporation Harrisburg, Pa 17105-3608	
DIMENSIONS: mm [INCHES]		CHK R. SWING 09 JAN 92	NAME MTA 156 CONNECTOR ASSEMBLY, 20 AWG, STANDARD	
TOLERANCES UNLESS OTHERWISE SPECIFIED:		APPD T. WELT 09 JAN 92	SIZE CASE CODE DRAWING NO A2 00779 C-644663	
0 PLC ± .01	1 PLC ± .01	PRODUCT SPEC 108-1051	RESTRICTED TO -	
2 PLC ± .01	3 PLC ± .01	APPLICATION SPEC 114-1020	SCALE 4:1 SHEET 1 OF 1 REV B1	
4 PLC ± .01	ANGLES ± .5°	FINISH	CUSTOMER DRAWING	

METRIC

AMP 1471-9 REV 31MM2000