

4

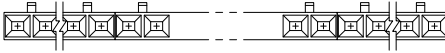
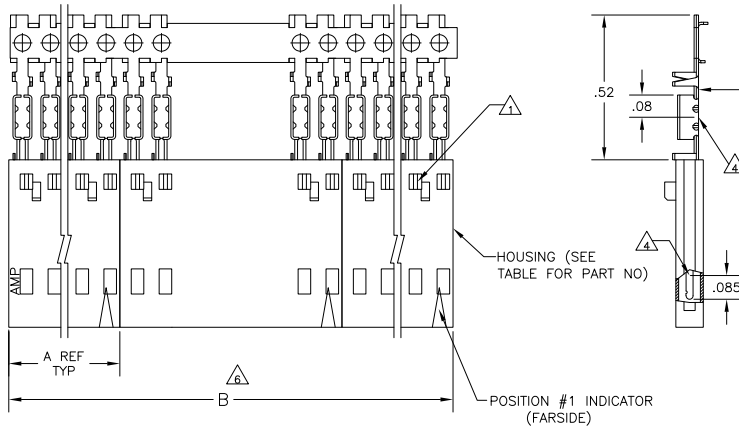
3

2

1

THIS DRAWING IS UNPUBLISHED. RELEASED FOR PUBLICATION BY TYCO ELECTRONICS CORPORATION. ALL RIGHTS RESERVED.

LOC	DIST	REVISIONS					
AD	00	P	LTR	DESCRIPTION	DATE	BY	APP'D
		L		EC 063C-0771 04	28DEC04	BSV	JLG
		L1		REVISED PER ECO-09-020689	01SEP09	KK	AEG



- △ CONTACTS ARE LATCHED INTO THE PRELOAD WINDOWS
- △ USE WITH #26-#30 AWG WIRE SIZE, .054/.030 INSULATION DIAMETER, .015 MAXIMUM INSULATION THICKNESS
- △ THE DIMENSION APPLIES WITH THE FORWARD PRELOAD STOP IN CONTACT WITH THE HOUSING SURFACE
- △ POINT OF MEASUREMENT FOR PLATING THICKNESS
- 5 FOR INDIVIDUAL ASSEMBLIES SEE PART NUMBER 103657
- △ ASSEMBLIES ARE JOINED BY THE CARRIER STRIP. ORDER QUANTITY REFLECTS TOTAL NUMBER OF INDIVIDUAL ASSEMBLIES REQUIRED. SEE TABLE FOR NUMBER OF ASSEMBLIES PER STRIP.
- △ .000015 GOLD IN THE CONTACT AREA, .000050-.000100 BRIGHT TIN-LEAD ON THE TERMINATION AREA, ALL OVER .000050 NICKEL.
- △ .000015 GOLD IN THE CONTACT AREA, .000050-.000100 BRIGHT TIN ON THE TERMINATION AREA, ALL OVER .000050 NICKEL.
- △ PRELIMINARY PART - NOT RELEASED FOR PRODUCTION.
- △ HOUSING MATERIAL: FLAME RETARDANT THERMOPLASTIC, COLOR BLACK.
- △ .000015 GOLD IN THE CONTACT AREA, .000050-.000100 MATTE TIN ON THE TERMINATION AREA, ALL OVER .000050 NICKEL.
- △ OBSOLETE PARTS: OBSOLETE CIS STREAMLINING PER D.RENAUD/D.SINISI

△ OBSOLETE	△	2	2.40	1.198	1-104503-1	12	6-103954-1
△ OBSOLETE	△	2	2.20	1.098	1-104503-0	11	6-103954-0
△ OBSOLETE	△	2	2.00	.998	104503-9	10	5-103954-9
△ OBSOLETE	△	2	1.80	.898	104503-8	9	5-103954-8
△ OBSOLETE	△	2	1.60	.798	104503-7	8	5-103954-7
△ OBSOLETE	△	2	1.40	.698	104503-6	7	5-103954-6
△ OBSOLETE	△	4	2.39	.598	104503-5	6	5-103954-5
△	△	4	1.99	.498	104503-4	5	5-103954-4
△	△	5	1.99	.398	104503-3	4	5-103954-3
△	△	5	1.49	.298	104503-2	3	5-103954-2
△	△	10	1.98	.198	104503-1	2	5-103954-1
△	△	5	1.99	.398	104503-3	4	1-103954-2
△ OBSOLETE	△	2	2.40	1.198	1-104503-1	12	1-103954-1
△ OBSOLETE	△	2	2.20	1.098	1-104503-0	11	1-103954-0
△ OBSOLETE	△	2	2.00	.998	104503-9	10	103954-9
△ OBSOLETE	△	2	1.80	.898	104503-8	9	103954-8
△ OBSOLETE	△	2	1.60	.798	104503-7	8	103954-7
△ OBSOLETE	△	2	1.40	.698	104503-6	7	103954-6
△ OBSOLETE	△	4	2.39	.598	104503-5	6	103954-5
△ OBSOLETE	△	4	1.99	.498	104503-4	5	103954-4
△	△	5	1.99	.398	104503-3	4	103954-3
△	△	5	1.49	.298	104503-2	3	103954-2
△	△	10	1.98	.198	104503-1	2	103954-1

PLATING	△	B	A	HOUSING PART NUMBER	NO OF POSN	ASSEMBLY PART NUMBER ON STRIP
THIS DRAWING IS A CONTROLLED DOCUMENT. BY: L. MAYER, GENOVA; CHK: J. GEFORD, OBROCT03; APP: J. GEFORD, OBROCT03; PRODUCT SPEC: 108-25034; APPLICATION SPEC: 114-25026; WEIGHT: -; FINISH: SEE TABLE.						
DIMENSIONS: INCHES				TYCO ELECTRONICS CORPORATION, Harrisburg, Pa 17105-3608		
MATERIAL: △				PIN ASSEMBLY, AMPMODU MTE, SINGLE ROW, .100		
CUSTOMER DRAWING				SIZE: A2	CAGE CODE: 00779	DRAWING NO: C=103954
				SCALE: 4:1	SHEET: 1 of 1	REV: L1

AMP 1471-9 REV 31MM2000

103954

A