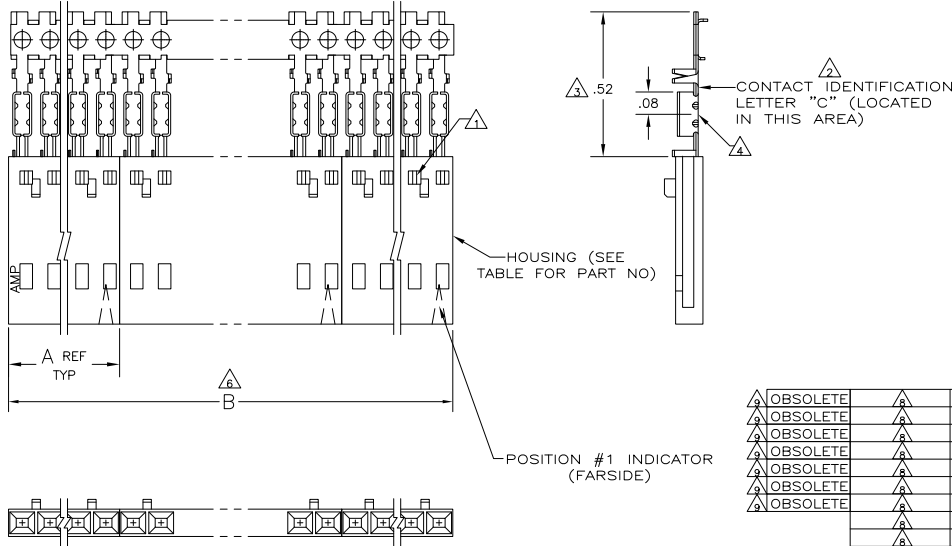


THIS DRAWING IS UNPUBLISHED. RELEASED FOR PUBLICATION
 © COPYRIGHT BY TYCO ELECTRONICS CORPORATION. ALL RIGHTS RESERVED.

LOC	DIST	REVISIONS			
P	LTR	DESCRIPTION	DATE	BY	APPD
J	EC	063C 0771 04	29DEC04	BSV	JLG
J1		REVISED PER ECO-09-020689	01SEP09	KK	AEG



1	OBSOLETE	2	2.40	1.198	1-104503-1	12	6-103953-1
2	OBSOLETE	2	2.20	1.098	1-104503-0	11	6-103953-0
3	OBSOLETE	2	2.00	.998	104503-9	10	5-103953-9
4	OBSOLETE	2	1.80	.898	104503-8	9	5-103953-8
5	OBSOLETE	2	1.60	.798	104503-7	8	5-103953-7
6	OBSOLETE	2	1.40	.698	104503-6	7	5-103953-6
7	OBSOLETE	4	2.39	.598	104503-5	6	5-103953-5
8	OBSOLETE	4	1.99	.498	104503-4	5	5-103953-4
9	OBSOLETE	5	1.99	.398	104503-3	4	5-103953-3
10	OBSOLETE	5	1.49	.298	104503-2	3	5-103953-2
11	OBSOLETE	10	1.98	.198	104503-1	2	5-103953-1
12	OBSOLETE	2	2.40	1.198	1-104503-1	12	1-103953-1
13	OBSOLETE	2	2.20	1.098	1-104503-0	11	1-103953-0
14	OBSOLETE	2	2.00	.998	104503-9	10	103953-9
15	OBSOLETE	2	1.80	.898	104503-8	9	103953-8
16	OBSOLETE	2	1.60	.798	104503-7	8	103953-7
17	OBSOLETE	2	1.40	.698	104503-6	7	103953-6
18	OBSOLETE	4	2.39	.598	104503-5	6	103953-5
19	SUPERSEDED	4	1.99	.498	104503-4	5	103953-4
20	SUPERSEDED	5	1.99	.398	104503-3	4	103953-3
21	OBSOLETE	5	1.49	.298	104503-2	3	103953-2
22	OBSOLETE	10	1.98	.198	104503-1	2	103953-1

- 1 CONTACTS ARE LATCHED INTO THE PRELOAD WINDOWS
- 2 USE WITH #26-#30 AWG WIRE SIZE, .054/.030 INSULATION DIAMETER, .015 MAXIMUM INSULATION THICKNESS
- 3 THE DIMENSION APPLIES WITH THE FORWARD PRELOAD STOP IN CONTACT WITH THE HOUSING SURFACE
- 4 POINT OF MEASUREMENT FOR PLATING THICKNESS
- 5 FOR INDIVIDUAL ASSEMBLIES SEE PART NUMBER 103656
- 6 ASSEMBLIES ARE JOINED BY THE CARRIER STRIP. ORDER QUANTITY REFLECTS TOTAL NUMBER OF INDIVIDUAL ASSEMBLIES REQUIRED. SEE TABLE FOR NUMBER OF ASSEMBLIES PER STRIP.
- 7 FINISH: PINS: .000100-.000200 BRIGHT TIN-LEAD OVER .000050 NICKEL
- 8 FINISH: PINS: .000100-.000200 MATTE TIN OVER .000050 NICKEL
- 9 OBSOLETE PARTS: OBSOLETE CIS STREAMLINING PER D.RENAUD/D.SINISI

PLATING	△	B	A	HOUSING PART NUMBER	NO OF POSN	ASSEMBLY PART NUMBER ON STRIP
THIS DRAWING IS A CONTROLLED DOCUMENT.						
DIMENSIONS: INCHES		TOLERANCES UNLESS OTHERWISE SPECIFIED:		THIS DRAWING IS A CONTROLLED DOCUMENT. L. MAYER 5-11-06 P. C. DEYONG 12-11-06 P. C. DEYONG 12-11-06 PRODUCT SPEC: 108-25034 APPLICATION SPEC: 114-25026 FINISH: - MATERIAL: HOUSING: PLATE RETROWELD; CONTACTS: 90% COPPER, 10% NICKEL; PIN: PRO BRONZE		
SEE TABLE				Tyco Electronics Corporation Harrisburg, Pa 17105-3608 PIN ASSEMBLY, AMPMODU MTE, SINGLE ROW, .100 C/L, GUIDE RIBS, FOR #26-#30 AWG WIRE SIZE, STRIP FORM SIZE: ONE CODE (FORMING NO) A200779C=103953 CUSTOMER DRAWING SCALE: 4:1 SHEET 1 OF 1 REV J1		

AMP 1471-9 REV 31MM2000

103953

A