

4

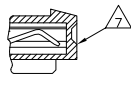
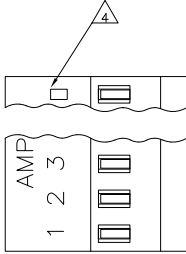
3

2

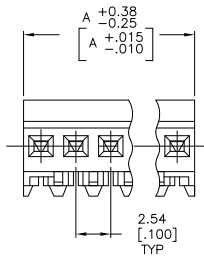
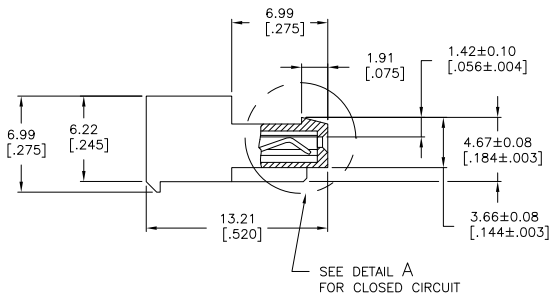
1

THIS DRAWING IS UNPUBLISHED. RELEASED FOR PUBLICATION. BY TYCO ELECTRONICS CORPORATION. ALL RIGHTS RESERVED.

| LOC | DIST | REVISIONS                 |         |    |       |
|-----|------|---------------------------|---------|----|-------|
| F   | LNK  | DESCRIPTION               | DATE    | BY | APP'D |
|     | D    | REVISED PER ECO-07-003755 | 28FEB07 | KW | DB    |
|     | D1   | REVISED PER ECO-09-023313 | 09OCT09 | KK | AEG   |



DETAIL A



⚠ MATERIAL: CONNECTOR - NYLON UL94V-2 (WHITE).  
 CONTACTS - 0.30[.012] THICK COPPER ALLOY  
 MATTE WHISKER MITIGATED TIN  
 0.00203[.000080] MIN THICKNESS  
 OVER NICKEL UNDERPLATE OR BRIGHT  
 TIN-LEAD 93/7 0.00203[.000080] MIN  
 THICKNESS. SEE FINISH COLUMN FOR  
 PLATING TYPE.

- 2. CONTACTS ACCEPT 24 AWG WIRE WITH 1.52[.060] MAX INSULATION DIAMETER.
- 3. CONTACTS MUST ACCEPT 0.64±0.03[.025±.001] SQUARE POST AND REMAIN LOCKED IN POSITION.
- ⚠ IDENTIFICATION NUMBER FOR LAST CIRCUIT MAY NOT APPEAR ON ALL ASSEMBLIES.
- 5. DIMENSIONS IN BRACKETS ARE IN INCHES.
- 6. HOUSING FEATURES ARE: CLOSED END WITH LOCKING RAMP.
- ⚠ DETAIL A SHOWS CIRCUIT NO.10 MOLDED CLOSED.
- ⚠ OBSOLETE PARTS: OBSOLETE CIS STREAMLINING PER D.RENAUD/D.SINISI

| FINISH   | DIM A         | NO OF CIRCUITS | PART NO    |
|----------|---------------|----------------|------------|
| TIN      | 27.94 [1.100] | 11             | 4-644431-1 |
| TIN-LEAD | 27.94 [1.100] | 11             | 1-644431-1 |

⚠ SUPERCEDED



THIS DRAWING IS A CONTROLLED DOCUMENT.

|                            |           |                                                                         |
|----------------------------|-----------|-------------------------------------------------------------------------|
| DRW: S. LEWIS              | 22 APR 91 | Tyco Electronics Corporation<br>Harrisburg, Pa 17105-3608               |
| CHK: R. SWING              | 22 APR 91 |                                                                         |
| APP'D: S. MILLER           | 22 APR 91 | NAME                                                                    |
| PRODUCT SPEC: 108-1050     |           | MTA-100 CONNECTOR ASSEMBLY,<br>24 AWG, NO.10 CIRCUIT CLOSED,<br>SPECIAL |
| APPLICATION SPEC: 114-1019 |           | SIZE: CASE CODE: DRAWING NO: A200779C-644431                            |
| WEIGHT: -                  |           | RESTRICTED TO: -                                                        |
| MATERIAL: ⚠                | FINISH: ⚠ | CUSTOMER DRAWING                                                        |
|                            |           | SCALE: 5:1 SHEET: 1 OF 1 REV: D1                                        |