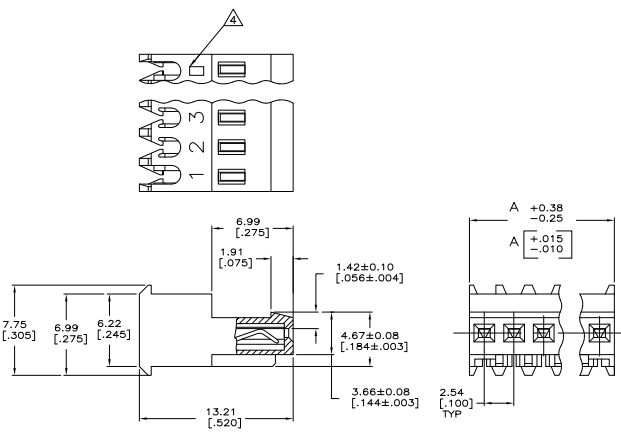


THIS DRAWING IS UNPUBLISHED AND NOT BE LOANED OR REPRODUCED IN ANY MANNER WITHOUT THE WRITTEN PERMISSION OF THE COMPANY.

REV	DATE	DESCRIPTION	BY	CHK	APP
P		REVISED PER ECO-07-003747			27FEB07 KW DB
P1		REVISED PER ECO-09-021826			09AUN10 KK AEG



71.12	[2.800]	28	5-641243-8
68.58	[2.700]	27	5-641243-7
66.04	[2.600]	26	5-641243-6
63.50	[2.500]	25	5-641243-5
60.96	[2.400]	24	5-641243-4
58.42	[2.300]	23	5-641243-3
55.88	[2.200]	22	5-641243-2
53.34	[2.100]	21	5-641243-1
50.80	[2.000]	20	5-641243-0
48.26	[1.900]	19	4-641243-9
45.72	[1.800]	18	4-641243-8
43.18	[1.700]	17	4-641243-7
40.64	[1.600]	16	4-641243-6
38.10	[1.500]	15	4-641243-5
35.56	[1.400]	14	4-641243-4
33.02	[1.300]	13	4-641243-3
30.48	[1.200]	12	4-641243-2
27.94	[1.100]	11	4-641243-1
25.40	[1.000]	10	4-641243-0
22.86	[.900]	9	3-641243-9
20.32	[.800]	8	3-641243-8
17.78	[.700]	7	3-641243-7
15.24	[.600]	6	3-641243-6
12.70	[.500]	5	3-641243-5
10.16	[.400]	4	3-641243-4
7.62	[.300]	3	3-641243-3
5.08	[.200]	2	3-641243-2
DIM A		NO.OF POSN	ASSEMBLY

△ SUPERSEDED BY 5-641243-8	71.12	[2.800]	28	-2-641243-8
△ SUPERSEDED BY 5-641243-7	68.58	[2.700]	27	-2-641243-7
△ SUPERSEDED BY 5-641243-6	66.04	[2.600]	26	-2-641243-6
△ SUPERSEDED BY 5-641243-5	63.50	[2.500]	25	-2-641243-5
△ SUPERSEDED BY 5-641243-4	60.96	[2.400]	24	-2-641243-4
△ SUPERSEDED BY 5-641243-3	58.42	[2.300]	23	-2-641243-3
△ SUPERSEDED BY 5-641243-2	55.88	[2.200]	22	-2-641243-2
△ SUPERSEDED BY 5-641243-1	53.34	[2.100]	21	-2-641243-1
△ SUPERSEDED BY 5-641243-0	50.80	[2.000]	20	-2-641243-0
△ SUPERSEDED BY 4-641243-9	48.26	[1.900]	19	-1-641243-9
△ SUPERSEDED BY 4-641243-8	45.72	[1.800]	18	-1-641243-8
△ SUPERSEDED BY 4-641243-7	43.18	[1.700]	17	-1-641243-7
△ SUPERSEDED BY 4-641243-6	40.64	[1.600]	16	-1-641243-6
△ SUPERSEDED BY 4-641243-5	38.10	[1.500]	15	-1-641243-5
△ SUPERSEDED BY 4-641243-4	35.56	[1.400]	14	-1-641243-4
△ SUPERSEDED BY 4-641243-3	33.02	[1.300]	13	-1-641243-3
△ SUPERSEDED BY 4-641243-2	30.48	[1.200]	12	-1-641243-2
△ SUPERSEDED BY 4-641243-1	27.94	[1.100]	11	-1-641243-1
△ SUPERSEDED BY 4-641243-0	25.40	[1.000]	10	-1-641243-0
△ SUPERSEDED BY 3-641243-9	22.86	[.900]	9	-641243-9
△ SUPERSEDED BY 3-641243-8	20.32	[.800]	8	-641243-8
△ SUPERSEDED BY 3-641243-7	17.78	[.700]	7	-641243-7
△ SUPERSEDED BY 3-641243-6	15.24	[.600]	6	-641243-6
△ SUPERSEDED BY 3-641243-5	12.70	[.500]	5	-641243-5
	10.16	[.400]	4	-641243-4
△ SUPERSEDED BY 3-641243-3	7.62	[.300]	3	-641243-3
△ SUPERSEDED BY 3-641243-2	5.08	[.200]	2	-641243-2
	DIM A		NO.OF POSN	ASSEMBLY

- △ MATERIAL: CONNECTOR-NYLON UL94V-2 (BLUE). CONTACTS-0.30 [.012] THICK COPPER ALLOY 0.00076 [.000030] GOLD IN CONTACT AREA WITH BRIGHT TIN-LEAD FOR 641243-2 THRU 2-641243-8, MATTE WHISKER MITIGATED TIN FOR 3-641243-2 THRU 5-641243-8 OVER NICKEL UNDERPLATE.
- 2. CONTACTS ACCEPT 26 AWG WIRE WITH 1.52 [.060] MAX INSULATION DIAMETER.
- 3. CONTACTS MUST ACCEPT 0.64±0.03 [.025±.001] SQUARE POST AND REMAIN LOCKED IN POSITION.
- △ IDENTIFICATION NUMBER FOR LAST CIRCUIT MAY NOT APPEAR ON ALL ASSEMBLIES.
- 5. DIMENSIONS IN BRACKETS ARE IN INCHES.
- 6. HOUSING FEATURES ARE: FEED THRU WITH LOCKING RAMP.
- △ OBSOLETE PARTS: OBSOLETE CIS STREAMLINING PER D.RENAUD/D.SINISI



THIS DRAWING IS A CONTROLLED DOCUMENT. IT IS THE PROPERTY OF METRIC ELECTRONICS CORPORATION. IT IS TO BE KEPT IN CONFIDENCE AND NOT BE LOANED OR REPRODUCED IN ANY MANNER WITHOUT THE WRITTEN PERMISSION OF THE COMPANY.

DATE: 114-1019  
 CUSTOMER DRAWING: A100779 (G=641243)  
 SIZE: 6.1  
 SHEET: 1 OF 1  
 REV: P1

LEAD CONTAINS LEAD