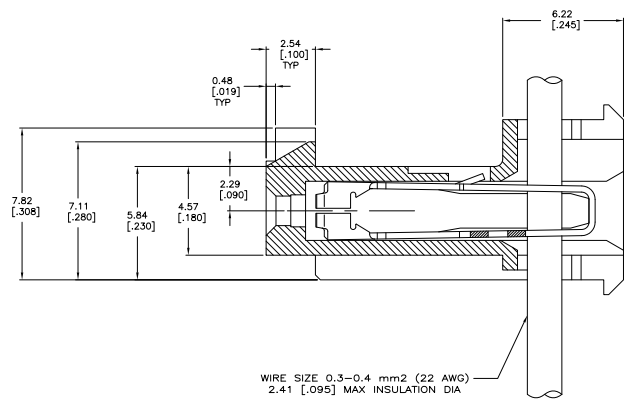
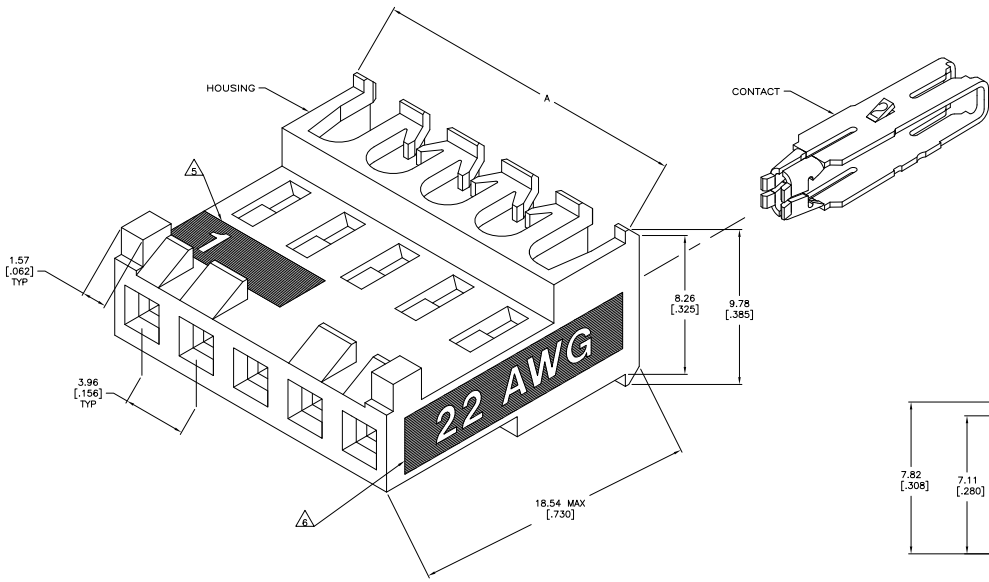


THIS DRAWING IS UNPUBLISHED. ALL RIGHTS RESERVED.
 © 2008 BY TEDES ELECTRONICS CORPORATION. ALL RIGHTS RESERVED.

REV	DATE	DESCRIPTION	BY	CHK	APP
CM 00					
E	ECO-07-012895		23APR07	KW	DB
E1	REVISED PER ECO-09-022908		08OCT08	KK	AEG

- OPERATING TEMPERATURE: -55°C TO 105°C.
- MATERIAL: HOUSING, NYLON 6/6, UL 94V-0, BLACK CONTACT, 0.30 [.012] THICK COPPER ALLOY
- FINISH: BRIGHT TIN-LEAD PLATE 0.00203-0.00508 [.000080-.000200"] THICK OR MATTE WHISKER MITIGATED TIN 0.00203 [.000080] MIN THICKNESS OVER NICKEL UNDERPLATE.
- LUBRICATED WITH AMP ANTI-FRETTING LUBRICANT.
- IDENTIFICATION NUMBER FOR FIRST CIRCUIT.
- WIRE GAUGE IDENTIFICATION
- DIMENSIONS IN BRACKETS ARE IN INCHES.
- CONTACT MUST ACCEPT 1.14±0.03 [.045±.001] SQUARE POST AND REMAINED LOCKED IN POSITION.
- OBsolete PARTS: OBSOLETE CIS STREAMLINING PER D.RENAUD/D.SINISI



TIN	47.55±0.30	1.872±.012	12	4-644389-2
TIN	43.59±0.30	1.716±.012	11	4-644389-1
TIN	39.62±0.30	1.560±.012	10	4-644389-0
TIN	35.66±0.30	1.404±.012	9	3-644389-9
TIN	31.70±0.30	1.248±.012	8	3-644389-8
TIN	27.74±0.30	1.092±.012	7	3-644389-7
TIN	23.77±0.30	.936±.012	6	3-644389-6
TIN	19.81±0.30	.780±.012	5	3-644389-5
TIN	15.85±0.15	.624±.006	4	3-644389-4
TIN	11.89±0.15	.468±.006	3	3-644389-3
TIN	7.92±0.15	.312±.006	2	3-644389-2
FINISH	A		NO OF CKTS	PART NO

△ SUPERCEDED	TIN-LEAD	47.55±0.30	1.872±.012	12	1-644389-2
△ SUPERCEDED	TIN-LEAD	43.59±0.30	1.716±.012	11	1-644389-1
△ SUPERCEDED	TIN-LEAD	39.62±0.30	1.560±.012	10	1-644389-0
△ SUPERCEDED	TIN-LEAD	35.66±0.30	1.404±.012	9	644389-9
△ SUPERCEDED	TIN-LEAD	31.70±0.30	1.248±.012	8	644389-8
△ SUPERCEDED	TIN-LEAD	27.74±0.30	1.092±.012	7	644389-7
△ SUPERCEDED	TIN-LEAD	23.77±0.30	.936±.012	6	644389-6
△ SUPERCEDED	TIN-LEAD	19.81±0.30	.780±.012	5	644389-5
△ SUPERCEDED	TIN-LEAD	15.85±0.15	.624±.006	4	644389-4
△ SUPERCEDED	TIN-LEAD	11.89±0.15	.468±.006	3	644389-3
△ SUPERCEDED	TIN-LEAD	7.92±0.15	.312±.006	2	644389-2
FINISH	A		NO OF CKTS	PART NO	

THIS DRAWING IS A CONTROLLED DOCUMENT.

REV	DATE	DESCRIPTION	BY	CHK	APP
1					

TEDES ELECTRONICS CORPORATION
 Harrisburg, Pa 17105-3008

MTA-156 CONNECTOR ASSEMBLY, QUAD, 22 AWG, FEED THRU, WITH LOCKING RAMP, WITH POLARIZING TABS

108-1219
 114-1048
 A100779 G-644389

CUSTOMER DRAWING

