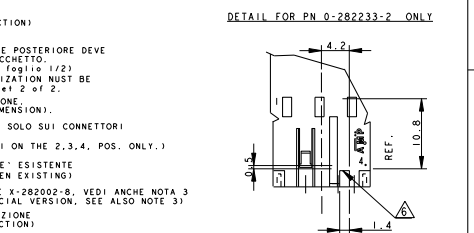


LOC	DISP	REVISIONS
P	LVA	DESCRIPTION
AA6		REVISED PER ECO-11-005301
		DATE
		BY
		CHK
		APP



2	BLOCCETTO (HOUSING)	NATURALE (NATURAL)	PA 6,6 CARICATO VETRO (POLIAMIDE 6,6 GLASSFIBER FILLED)
1	CONTATTO (CONTACT)	STAGNATO (TIN-PLATED)	OTTONE (BRASS)
ITEM	DENOMINAZIONE (DESCRIPTION)	FINITURA / COLORE (FINISH / COLOUR)	MATERIALE (MATERIAL)
			DRAW. ASSOCIATE (1:100, 1:200) (DRAWING RANGE)
			3,0 max. 0,5-1,5mm2

THIS DRAWING IS A CONTROLLED DOCUMENT. **ENR** 23JUL1995
G. TURCO 23JUL1995
G. TURCO 23JUL1995

PRODUCT SPEC: **108-200065-1, 108-200065-2**
 APPLICATION SPEC: **114-20016, 114-20016**

MATERIAL: SEE TABLE
 FINISH: SEE TABLE
 WEIGHT: -
 CUSTOMER DRAWING

TE Connectivity
MONO-SHAPE MK1 CONNECTORS 2-10 POS.

CASE CODE: **A200779**
 DRAWING NO: **C=282002**

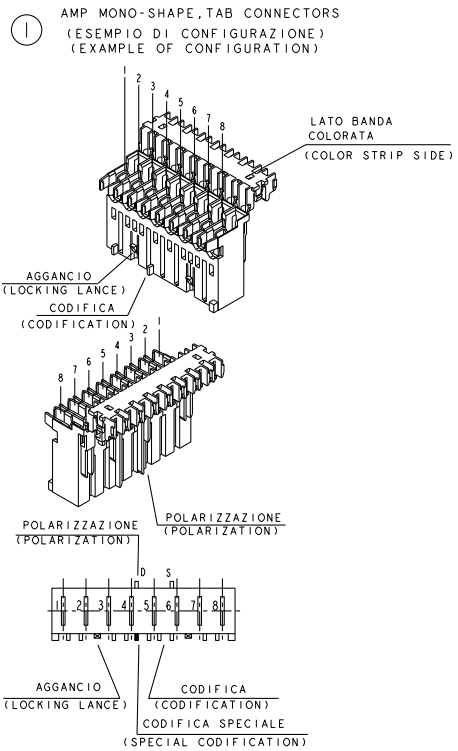
RESTRICTED TO: -
 SCALE: NO SHEET 1 OF 3 REF: AA6

THIS DRAWING IS UNPUBLISHED. RELEASED FOR PUBLICATION. ALL RIGHTS RESERVED. COPYRIGHT 2011

LOC	DIST	REVISONS	DATE	DAW	APVS
-	-	P LVA			
		DESCRIPTION			
		SEE SHEET 1			

VISTE SOLO PER RIFERIMENTO
VIEWS ONLY FOR REFERENCE

LEGENDA
(DESCRIPTION)



TE PART NUMBER ASSY CONN.										
NUMERO DI VIE	CONFIGURAZIONE (Vista connector dall'alto)	VERSIONE PEZZI IN VASSOIO	VERSIONE PEZZI SCIOLTI	POSIZIONE POLARIZ. (LATO POSIZIONE)	POSIZIONE AGGANCIO (LATO POSIZIONE)	POSIZIONE CODIFICA SPECIALE (LATO POSIZIONE)	+0.2 -0.3 (mm)	NOTE	CODICI RAST 5 RICAVABILI	
NO. OF POS.	CONFIGURATION (View from top side)	TRAY PACKAGING VERSION	LOOSE PIECES PACKAGING VERSION	PART REV.	POLARIZ. POSITION (HOLE SIDE)	LOCKING POSITION (HOLE SIDE)	SPECIAL POSITION (HOLE SIDE)	+0.2 -0.3 (mm)	NOTE	RAST 5 OBTAINABLE CODE
6		1-282006-2	V 2-282006-2	V	2S SD	2-3	-	29.9	VIOLA VIOLET	OBSOLETE
6		1-282006-3	V 2-282006-3	V	2S 3D 4D 5D	4-5	-	29.9	-	OBSOLETE
6		2-282006-4	V	-	3D 5D	-	5S	29.9	NERO BLACK	-
6		1-284745-1	Z	-	6D	4-5	-	29.9	ROSSO RED	-
7		1-282007-1	V 2-282007-1	V	1D 5D	1-2 5-6	3S	34.9	-	OBSOLETE
7		1-284397-1	Z	-	2D	1-2 5-6	-	34.9	NERO BLACK	-
7		1-293004-7	Z	-	-	1-2 5-6	-	34.9	ROSSO RED	-
7		2-282007-2	V	-	4D 6D	-	6S	34.9	VIOLA VIOLET	-
8		0-284085-1	V 2-284085-1	V	2D 6S 4D 6D	-	4S	39.9	-	OBSOLETE
8		0-284085-2	V 2-284085-2	V	-	2-3	-	39.9	VIOLA VIOLET	OBSOLETE
10		1-282010-1	V 2-282010-1	V	6D 8S	4-5 8-9	6S	49.9	-	-
10		0-284004-1	V	-	6D 8S	4-5 8-9	6S	49.9	-	-
6		1-284745-2	I	-	6D	-	4D	29.9	RED	-

THIS DRAWING IS A CONTROLLED DOCUMENT. DWG. ENDR. 23JUL1995. G. TURCO 23JUL1995. G. TURCO 23JUL1995. G. TURCO 23JUL1995. NAME: G. TURCO. PRODUCT SPEC: 108-200065-1, 108-200065-2. APPLICATION SPEC: 114-20016, 114-20016. WEIGHT: -. CASE CODE: A200779. DRAWING NO: C-282002. RESTRICTED TO: -. MATERIAL: SEE TABLE. SEE TABLE. CUSTOMER DRAWING. SCALE: NO. SHEET: 3 OF 3. REF: AA6.

TE Connectivity
MONO-SHAPE MK1 CONNECTORS 2-10 POS.