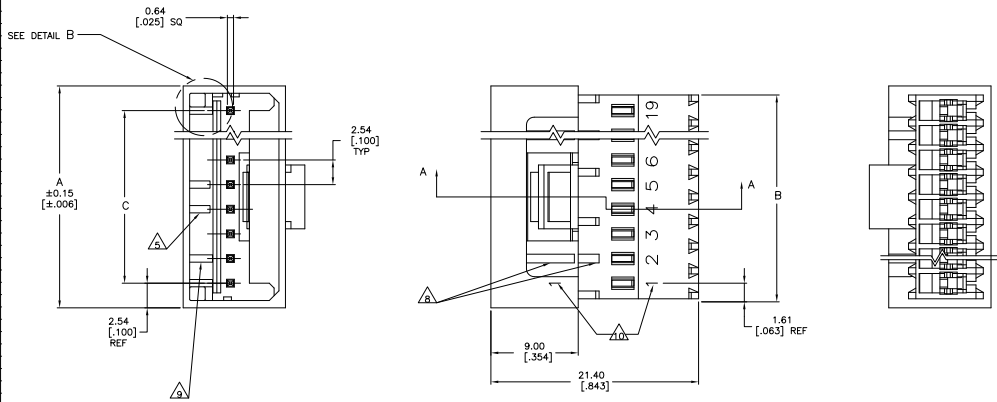
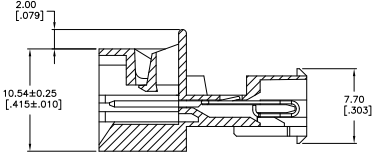


THIS DRAWING IS UNPUBLISHED
 ALL RIGHTS RESERVED

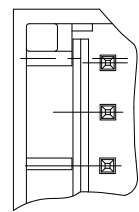
REVISES		DATE	BY	APP
CM	00			



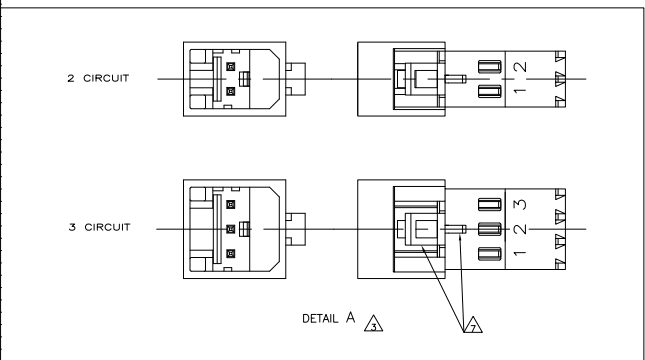
- △ MATERIAL:
 HOUSING- NYLON UL94V-2 (RED).
 CONTACTS- 0.30 [.012] THK COPPER ALLOY
 PLATING : BRIGHT TIN-LEAD FOR 0.00203[.000080] MIN
 THK 647000-2 THRU 1-647000-9 OR MATTE TIN
 0.00203[.000080] MIN THK. FOR 3-647000-2 THRU
 4-647000-9.
- 2 CONTACTS ACCEPT 22 AWG (0.3 - 0.4 mm²) TIN PLATED
 SOLID, CONCENTRIC FUSED STRANDED, OR
 CONCENTRIC STRANDED (7 AND 19 STRAND) WIRE
 WITH 1.52 [.060] MAX INSULATION DIAMETER.
- △ MATES WITH STANDARD MTA-100 CONNECTORS:
 OF THE SAME CIRCUIT SIZE
 WITH SIMILARLY PLATED CONTACTS
 WITH POLARIZING TABS-CIRCUIT SIZES 4-19 ONLY
 WITHOUT POLARIZING TABS-CIRCUIT SIZES 2 & 3.
- △ DOES NOT MATE WITH MTA-100 CONNECTORS:
 WITH POLARIZING TABS-CIRCUIT SIZES 2 & 3 ONLY.
 (SEE DETAIL A)
 WITH BLOCKED CIRCUITS -ALL CIRCUIT SIZES.
 NOT RECOMMENDED FOR MATING WITH MTA-100
 CONNECTOR WITHOUT POLARIZING TABS.
 CIRCUIT SIZES 4-19.
- △ ACCESSORIES:
 REPLACEMENT IDC CONTACTS: 647030-1.
 COVERS: SEE TABLE.
- △ QUANTITY OF CENTRALLY POSITIONED RAILS
 VARIES WITH CIRCUIT SIZE. (SEE TABLE)
 LOCATION MAY DIFFER FROM EXAMPLE SHOWN.
- 6 DIMENSIONS IN BRACKETS ARE IN INCHES.
- △ SIMILAR SIZED LOCK AND SINGLE TAB USED
 OR CIRCUITS 4 & 5.
- △ QUANTITY OF GUSSET RIBS VARIES WITH
 CIRCUIT SIZE (SEE TABLE).
 LOCATION MAY DIFFER FROM EXAMPLE SHOWN.
- △ INNER END RAIL PAIR NOT PRESENT FOR
 CIRCUIT SIZES 2 OR 3.
- △ CIRCUIT ID MAY APPEAR FULLY NUMBERED OR SHOWING
 LOCATION 1 ONLY DEPENDING ON CIRCUIT SIZE.
- △ OBSOLETE PARTS: OBSOLETE CIS STREAMLINING PER D.RENAUD/D.SINISI



SECTION A-A



DETAIL B
 SCALE 10:1
 ALTERNATE CONFIGURATION



DETAIL A



THIS DRAWING IS A CONTROLLED DOCUMENT.		DATE: 11/21/97		DRAWN BY: J. JONES		CHECKED BY: J. JONES		DATE: 11/21/97		DRAWN BY: J. JONES		CHECKED BY: J. JONES		DATE: 11/21/97	
DRAWN BY: J. JONES		CHECKED BY: J. JONES		DATE: 11/21/97		DRAWN BY: J. JONES		CHECKED BY: J. JONES		DATE: 11/21/97		DRAWN BY: J. JONES		CHECKED BY: J. JONES	
TITLE: MTA-100 POSTED CONNECTOR ASSEMBLY, CLOSED END, 22 AWG, TIN		PART NO: 647000		REV: 0		DATE: 11/21/97		DRAWN BY: J. JONES		CHECKED BY: J. JONES		DATE: 11/21/97		DRAWN BY: J. JONES	
CUSTOMER DRAWING		SCALE: 5:1		SHEET: 1		OF: 2		REV: F3		DATE: 11/21/97		DRAWN BY: J. JONES		CHECKED BY: J. JONES	

THIS DRAWING IS UNPUBLISHED
 ALL RIGHTS RESERVED

REV	DATE	DESCRIPTION	BY	CHK	APP
00	CM	SEE SHEET 1			

QTY	DESCRIPTION	UNIT	MM	IN	MM	IN	MM	IN	NO. OF CIRCUITS	PART NO
4	1-640642-9	1-643077-9	45.72	1.800	48.95	1.927	50.80	2.000	19	4-647000-9
4	1-640642-8	1-643077-8	43.18	1.700	46.41	1.827	48.26	1.900	18	4-647000-8
4	1-640642-7	1-643077-7	40.64	1.600	43.87	1.727	45.72	1.800	17	4-647000-7
4	1-640642-6	1-643077-6	38.10	1.500	41.33	1.627	43.18	1.700	16	4-647000-6
4	1-640642-5	1-643077-5	35.56	1.400	38.79	1.527	40.64	1.600	15	4-647000-5
4	1-640642-4	1-643077-4	33.02	1.300	36.25	1.427	38.10	1.500	14	4-647000-4
4	1-640642-3	1-643077-3	30.48	1.200	33.71	1.327	35.56	1.400	13	4-647000-3
2	1-640642-2	1-643077-2	27.94	1.100	31.17	1.227	33.02	1.300	12	4-647000-2
2	1-640642-1	1-643077-1	25.40	1.000	28.63	1.127	30.48	1.200	11	4-647000-1
2	1-640642-0	1-643077-0	22.86	.900	26.09	1.027	27.94	1.100	10	4-647000-0
2	640642-9	643077-9	20.32	.800	23.55	.927	25.40	1.000	9	3-647000-9
2	640642-8	643077-8	17.78	.700	21.01	.827	22.86	.900	8	3-647000-8
0	640642-7	643077-7	15.24	.600	18.47	.727	20.32	.800	7	3-647000-7
0	640642-6	643077-6	12.70	.500	15.93	.627	17.78	.700	6	3-647000-6
0	640642-5	643077-5	10.16	.400	13.39	.527	15.24	.600	5	3-647000-5
0	640642-4	643077-4	7.62	.300	10.85	.427	12.70	.500	4	3-647000-4
0	640642-3	643077-3	5.08	.200	8.31	.327	10.16	.400	3	3-647000-3
0	-	643077-2	2.54	.100	5.77	.227	7.62	.300	2	3-647000-2
4	1-640642-9	1-643077-9	45.72	1.800	48.95	1.927	50.80	2.000	19	1-647000-9
4	1-640642-8	1-643077-8	43.18	1.700	46.41	1.827	48.26	1.900	18	1-647000-8
4	1-640642-7	1-643077-7	40.64	1.600	43.87	1.727	45.72	1.800	17	1-647000-7
4	1-640642-6	1-643077-6	38.10	1.500	41.33	1.627	43.18	1.700	16	1-647000-6
4	1-640642-5	1-643077-5	35.56	1.400	38.79	1.527	40.64	1.600	15	1-647000-5
4	1-640642-4	1-643077-4	33.02	1.300	36.25	1.427	38.10	1.500	14	1-647000-4
4	1-640642-3	1-643077-3	30.48	1.200	33.71	1.327	35.56	1.400	13	1-647000-3
2	1-640642-2	1-643077-2	27.94	1.100	31.17	1.227	33.02	1.300	12	1-647000-2
2	1-640642-1	1-643077-1	25.40	1.000	28.63	1.127	30.48	1.200	11	1-647000-1
2	1-640642-0	1-643077-0	22.86	.900	26.09	1.027	27.94	1.100	10	1-647000-0
2	640642-9	643077-9	20.32	.800	23.55	.927	25.40	1.000	9	647000-9
2	640642-8	643077-8	17.78	.700	21.01	.827	22.86	.900	8	647000-8
0	640642-7	643077-7	15.24	.600	18.47	.727	20.32	.800	7	647000-7
0	640642-6	643077-6	12.70	.500	15.93	.627	17.78	.700	6	647000-6
0	640642-5	643077-5	10.16	.400	13.39	.527	15.24	.600	5	647000-5
0	640642-4	643077-4	7.62	.300	10.85	.427	12.70	.500	4	647000-4
0	640642-3	643077-3	5.08	.200	8.31	.327	10.16	.400	3	647000-3
0	-	643077-2	2.54	.100	5.77	.227	7.62	.300	2	647000-2
	DUST COVER	STRAIN RELIEF COVERS	QTY OF GUSSET RIBS	QTY OF CENTRAL RAILS	MM	IN	MM	IN	NO. OF CIRCUITS	PART NO
	ACCESSORIES									

△ SUPPLEMENTED BY E-647000-9
 △ SUPPLEMENTED BY E-647000-8
 △ SUPPLEMENTED BY E-647000-7
 △ SUPPLEMENTED BY E-647000-6
 △ SUPPLEMENTED BY E-647000-5
 △ SUPPLEMENTED BY E-647000-4
 △ SUPPLEMENTED BY E-647000-3
 △ SUPPLEMENTED BY E-647000-2
 △ SUPPLEMENTED BY E-647000-1
 △ SUPPLEMENTED BY E-647000-0

METRIC

THIS DRAWING IS A CONTROLLED DOCUMENT.

TE Connectivity
 MTA-100 POSTED CONNECTOR ASSEMBLY, CLOSED END, 22 AWG, 1N

SIZE: 22 AWG, 1N
 CUSTOMER DRAWING: A100779
 DATE: 11/11/11