

4

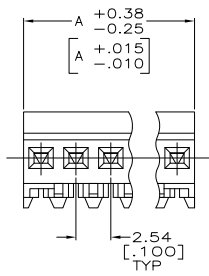
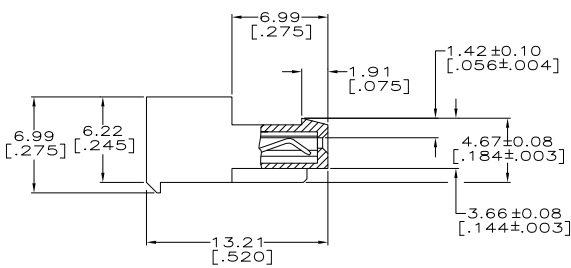
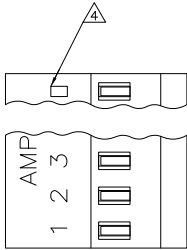
3

2

1

THIS DRAWING IS UNPUBLISHED. RELEASED FOR PUBLICATION  
 © COPYRIGHT BY TYCO ELECTRONICS CORPORATION. ALL RIGHTS RESERVED.

LOC	DIST	REVISIONS					
CM	00	F	LNK	DESCRIPTION	DATE	BY	APPD
		H		REVISION PER ECO-07-003728	23FEB07	KW	DB
		H1		REVISED PER ECO-09-023313	10OCT09	KK	AEG



△ MATERIAL: CONNECTOR-NYLON UL94V-0 (BLACK).  
 CONTACTS-0.30 [.012] THICK COPPER ALLOY  
 BRIGHT TIN-LEAD 0.00203 [.000080] MIN THICK FOR CONTACTS  
 643828-2 THRU 1-643828-5  
 MATTE WHISKER MITIGATED TIN PLATE 0.00203 [.000080] MIN THICK  
 OVER 0.00076 [.000030] MIN THICK NICKEL FOR CONTACTS  
 3-643828-2 THRU 4-643828-5.

- CONTACTS ACCEPT 26 AWG WIRE WITH 1.52 [.060] MAX INSULATION DIAMETER.
- CONTACTS MUST ACCEPT 0.64±0.03 [.025±.001] SQUARE POST AND REMAIN LOCKED IN POSITION.
- IDENTIFICATION NUMBER FOR LAST CIRCUIT MAY NOT APPEAR ON ALL ASSEMBLIES.
- DIMENSIONS IN BRACKETS ARE IN INCHES.
- HOUSING FEATURES ARE: CLOSED END WITH LOCKING RAMP.
- OBsolete PARTS: OBSOLETE CIS STREAMLINING PER D.RENAUD/D.SINISI

**METRIC**

LEAD FREE	DIM A	NO. OF POSN	ASSEMBLY
38.10	[1.500]	15	4-643828-5
35.56	[1.400]	14	4-643828-4
33.02	[1.300]	13	4-643828-3
30.48	[1.200]	12	4-643828-2
27.94	[1.100]	11	4-643828-1
25.40	[1.000]	10	4-643828-0
22.86	[.900]	9	3-643828-9
20.32	[.800]	8	3-643828-8
17.78	[.700]	7	3-643828-7
15.24	[.600]	6	3-643828-6
12.70	[.500]	5	3-643828-5
10.16	[.400]	4	3-643828-4
7.62	[.300]	3	3-643828-3
5.08	[.200]	2	3-643828-2

△ SUPERCEDED

CONTAINS LEAD	DIM A	NO. OF POSN	ASSEMBLY
38.10	[1.500]	15	1-643828-5
35.56	[1.400]	14	1-643828-4
33.02	[1.300]	13	1-643828-3
30.48	[1.200]	12	1-643828-2
27.94	[1.100]	11	1-643828-1
25.40	[1.000]	10	1-643828-0
22.86	[.900]	9	643828-9
20.32	[.800]	8	643828-8
17.78	[.700]	7	643828-7
15.24	[.600]	6	643828-6
12.70	[.500]	5	643828-5
10.16	[.400]	4	643828-4
7.62	[.300]	3	643828-3
5.08	[.200]	2	643828-2

△ SUPERCEDED  
 △ SUPERCEDED  
 △ SUPERCEDED

THIS DRAWING IS A CONTROLLED DOCUMENT.

DRW: S. HOOVER 03-DEC-2004	TYCO ELECTRONICS CORPORATION
CHK: D. BOSSI 03-DEC-2004	Harrisburg, Pa 17105-3608
APP: D. BOSSI	MTA .100 CONNECTOR ASSEMBLY
PROD: 108-1050	26 AWG, UL94V-0, SPECIAL
APP: 114-1019	SIZE: A2
HEAT: C-643828	SCALE: 5:1

CUSTOMER DRAWING SHEET 1 OF 1 REV H1