

4

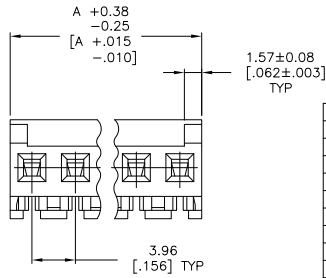
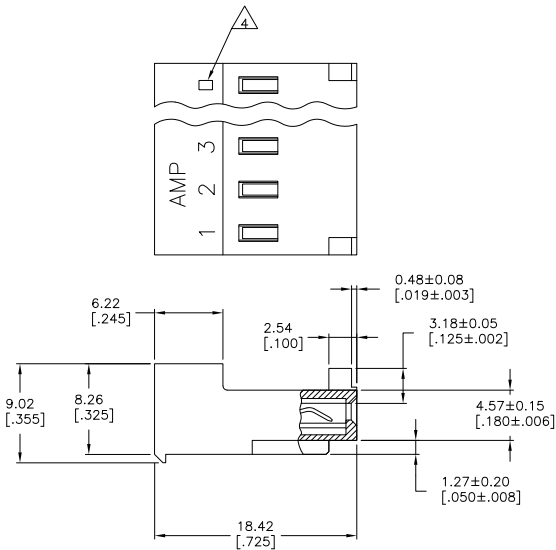
3

2

1

THIS DRAWING IS UNPUBLISHED. RELEASED FOR PUBLICATION  
 BY TYCO ELECTRONICS CORPORATION. ALL RIGHTS RESERVED.

LOC	DIST	REVISIONS			
F	LNK	DESCRIPTION	DATE	BY	APP
D		ECO-07-012862	12JUN07	KW	DB
D1		REVISED PER ECO-09-023313	09OCT09	KK	AEG



- △ MATERIAL: CONNECTOR - NYLON UL94V-2 (WHITE)  
 CONTACTS - 0.30 [.012] THICK COPPER ALLOY  
 BRIGHT-TIN LEAD 0.00203 [.000080] MIN THICK  
 FOR CONTACTS 644464-2 THRU 1-644464-4  
 MATTÉ WHISKER MITIGATED TIN 0.00203 [.000080]  
 MIN THICKNESS OVER NICKEL UNDERPLATE FOR  
 3-644464-2 THRU 4-644464-4
- 2. CONTACTS ACCEPT 24 AWG WIRE WITH 2.41[.095] MAX INSULATION DIAMETER.
- 3. CONTACTS MUST ACCEPT 1.14±0.03 [.045±.001] POST AND REMAIN LOCKED IN POSITION.
- △ IDENTIFICATION NUMBER FOR LAST CIRCUIT MAY NOT APPEAR ON ALL ASSEMBLIES.
- 5. DIMENSIONS IN BRACKETS ARE IN INCHES.
- 6. HOUSING FEATURES ARE: CLOSED END WITHOUT LOCKING RAMP AND WITH POLARIZING TAB.
- △ OBSOLETE PARTS: OBSOLETE CIS STREAMLINING PER D.RENAUD/D.SINISI

TIN	55.47	[2.184]	14	4-644464-4	
TIN	51.51	[2.028]	13	4-644464-3	
TIN	47.55	[1.872]	12	4-644464-2	
TIN	43.59	[1.716]	11	4-644464-1	
TIN	39.62	[1.560]	10	4-644464-0	
TIN	35.66	[1.404]	9	3-644464-9	
TIN	31.70	[1.248]	8	3-644464-8	
TIN	27.74	[1.092]	7	3-644464-7	
TIN	23.77	[.936]	6	3-644464-6	
TIN	19.81	[.780]	5	3-644464-5	
TIN	15.85	[.624]	4	3-644464-4	
TIN	11.89	[.468]	3	3-644464-3	
TIN	7.92	[.312]	2	3-644464-2	
△ SUPERSEDED	TIN-LEAD	55.47	[2.184]	14	-644464-4
△ SUPERSEDED	TIN-LEAD	51.51	[2.028]	13	-644464-3
△ SUPERSEDED	TIN-LEAD	47.55	[1.872]	12	-644464-2
△ SUPERSEDED	TIN-LEAD	43.59	[1.716]	11	-644464-1
△ SUPERSEDED	TIN-LEAD	39.62	[1.560]	10	-644464-0
△ SUPERSEDED	TIN-LEAD	35.66	[1.404]	9	-644464-9
△ SUPERSEDED	TIN-LEAD	31.70	[1.248]	8	-644464-8
△ SUPERSEDED	TIN-LEAD	27.74	[1.092]	7	-644464-7
△ SUPERSEDED	TIN-LEAD	23.77	[.936]	6	-644464-6
△ SUPERSEDED	TIN-LEAD	19.81	[.780]	5	-644464-5
△ SUPERSEDED	TIN-LEAD	15.85	[.624]	4	-644464-4
△ SUPERSEDED	TIN-LEAD	11.89	[.468]	3	-644464-3
△ SUPERSEDED	TIN-LEAD	7.92	[.312]	2	-644464-2
FINISH	DIM A		NO OF CIRCUITS	PART NO	

THIS DRAWING IS A CONTROLLED DOCUMENT.

DIMENSIONS: mm [INCHES]	TOLERANCES UNLESS OTHERWISE SPECIFIED:	0 PLG ± .	1 PLG ± .	2 PLG ± .	3 PLG ± 0.13 [.005]	4 PLG ± .	ANGLES ± .	FINISH

DRN	S. LEWIS	12 FEB 91	Tyco Electronics Corporation
CHK	S. LEWIS	12 FEB 91	Harrisburg, Pa 17105-3608
APPD	D. CLARK	20 FEB 91	
PRODUCT SPEC	108-1051		
APPLICATION SPEC	114-1020		
WEIGHT	-		

MTA-156 CONNECTOR ASSEMBLY, 24 AWG, STANDARD

SIZE CASE CODE DRAWING NO. RESTRICTED TO: A2 00779 C-644464

CUSTOMER DRAWING SCALE 4:1 SHEET 1 OF 1 REV D1



AMP 1471-9 REV 31MM2000

644464

A