

4

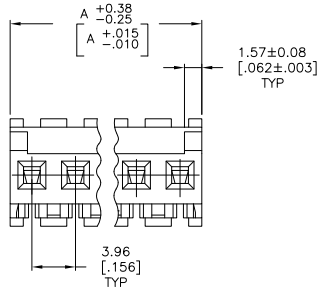
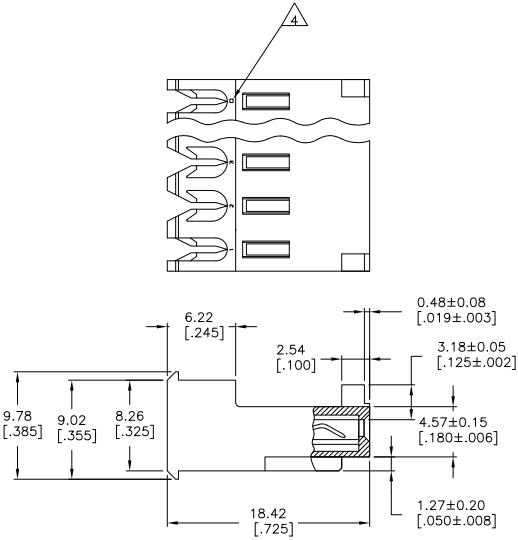
3

2

1

THIS DRAWING IS UNPUBLISHED. RELEASED FOR PUBLICATION
 © COPYRIGHT BY TYCO ELECTRONICS CORPORATION. ALL RIGHTS RESERVED.

LOC	DIST	REVISIONS					
CM	54	F	LR	DESCRIPTION	DATE	BY	APPD
		C		ECO-07-012855	06JUN07	KW	DB
		C1		REVISED PER ECO-09-023313	09OCT09	KK	AEG



55.47	[2.184]	14	4-644470-4
51.51	[2.028]	13	4-644470-3
47.55	[1.872]	12	4-644470-2
43.59	[1.716]	11	4-644470-1
39.62	[1.560]	10	4-644470-0
35.66	[1.404]	9	3-644470-9
31.70	[1.248]	8	3-644470-8
27.74	[1.092]	7	3-644470-7
23.77	[.936]	6	3-644470-6
19.81	[.780]	5	3-644470-5
15.85	[.624]	4	3-644470-4
11.89	[.468]	3	3-644470-3
7.92	[.312]	2	3-644470-2
55.47	[2.184]	14	1-644470-4
51.51	[2.028]	13	1-644470-3
47.55	[1.872]	12	1-644470-2
43.59	[1.716]	11	1-644470-1
39.62	[1.560]	10	1-644470-0
35.66	[1.404]	9	644470-9
31.70	[1.248]	8	644470-8
27.74	[1.092]	7	644470-7
23.77	[.936]	6	644470-6
19.81	[.780]	5	644470-5
15.85	[.624]	4	644470-4
11.89	[.468]	3	644470-3
7.92	[.312]	2	644470-2
DIM A		NO OF CIRCUITS	PART NO

△
SUPERSEDED

- △** MATERIAL: CONNECTOR - NYLON UL94V-2 (YELLOW).
 CONTACTS - 0.30[.012] THICK COPPER ALLOY
 BRIGHT TIN-LEAD 0.00203[.000080] MIN THICK FOR
 CONTACTS 644470-2 THRU 1-644470-4
 MATTE WHISKER MITIGATED TIN 0.00203[.000080] MIN
 THICKNESS OVER NICKEL UNDERPLATE FOR
 3-644470-2 THRU 4-644470-4
- 2. CONTACTS ACCEPT 20 AWG WIRE WITH 2.41[.095] MAX
 INSULATION DIAMETER.
- 3. CONTACTS MUST ACCEPT 1.14±0.03 [.045±.001] SQUARE
 POST AND REMAIN LOCKED IN POSITION.
- △** 4. IDENTIFICATION NUMBER FOR LAST CIRCUIT MAY
 NOT APPEAR ON ALL ASSEMBLIES.
- 5. DIMENSIONS IN BRACKETS ARE IN INCHES.
- 6. HOUSING FEATURES ARE: FEED-THRU WITHOUT
 LOCKING RAMP AND WITH POLARIZING TAB.
- △** 7. OBSOLETE PARTS: OBSOLETE CIS STREAMLINING PER D.RENAUD/D.SINISI

METRIC

THIS DRAWING IS A CONTROLLED DOCUMENT.

DIMENSIONS: mm [INCHES]	TOLERANCES UNLESS OTHERWISE SPECIFIED:	DRN S. LEWIS 12 FEB 91	CHK R. SWING 12 FEB 91	DATE 20 FEB 91	NAME D.R. CLARK	APPRO 108-1051	SIZE A2	CAGE CODE 00779	DRAWING NO C-644470	RESTRICTED TO -
MATERIAL △		FINISH △		CUSTOMER DRAWING		SCALE 4:1		SHEET 1 of 1		REV C1

TYCO ELECTRONICS CORPORATION
 Harrisburg, Pa 17105-3608

MTA 156 CONNECTOR ASSEMBLY,
 20 AWG, STANDARD

AMP 1471-9 REV 31MM2000

644470

A